

Proposed Red Spruce Wind Energy Project

SWEB Development

Contents

01 Company Overview

Presentation of SWEB Development and its parent company

02 Green Choice Program & Future Procurements

Learn about the program

03 Overview of Projects & Typical Timeline

Overview of SWEB's Proposed Red Spruce Wind Energy Project

04 Proposed Project Partnership & Next Steps

Overview of Partnership Structure & Next Steps for Partnership

SWEB Development

Renewable Energy for Nova Scotia



Renewable Energy Developer & Operator

- ⚡ We plan, we build, we operate. A reliable partner over the lifetime of the project
- ⚡ We have not sold a single project in over 25 years



Experienced in Community Partnerships

- ⚡ Existing Community Partnerships in
 - Nova Scotia
 - New Brunswick
 - Maine



North American Headquarters in Halifax

- ⚡ Halifax staff manages projects in Atlantic Canada & US
- ⚡ Every successful project sustains and creates jobs in Nova Scotia



Strong Financial Backing

- ⚡ SWEB's Parent company, W.E.B, is Austria's biggest community-owned renewable energy company
- ⚡ No majority shareholder

W.E.B Group at a glance

W.E.B

609 MW
installed capacity

8 countries

2 continents

Sustainable investment



8,300 investors

of which **6,500** are shareholders

228
employees



268

wind power plants



42

solar power plants



3

hydroelectric power plants



Clean energy for

1,000,000
people

Office locations

- 📍 Pfaffenschlag (headquarters; AT)
- 📍 Boston-Natick (USA)
- 📍 Bratislava (SK)
- 📍 Brno (CZ)
- 📍 Halifax (CA)
- 📍 Hamburg (DE)
- 📍 La Spezia (IT)
- 📍 Paris (FR)



Local Contributions

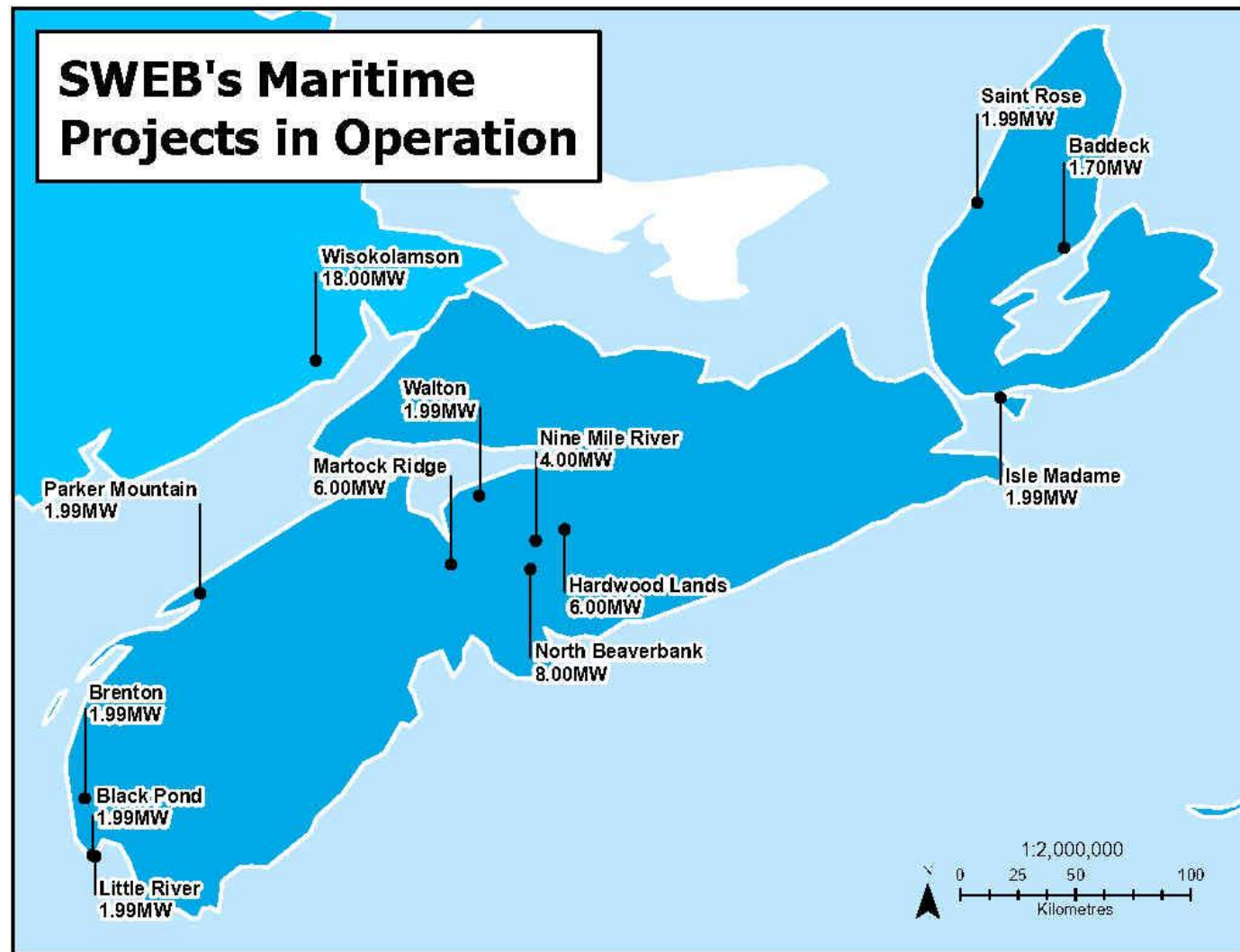
■ Sponsor of the “Halifax Hawks Atom A Hockey Team”

■ SWEB contributes community funds to:

- Walton and Area Development Association
- Baddeck Lions Club
- Hardwood Lands Community Centre
- Sipekne’katik First Nation (Indian Brook)
- Yarmouth and Area Community Fund
- Parker Mountain Wind Turbine Society
- Municipality of the County of Inverness
- Harbour Hall Community Fund
- West Hants Community Fund
- Beaver Bank Community Awareness Association
- Le fonds “La picasse” (Community Foundation)
- Nine Mile River Community Hall
- L’Association du Musee de Wedgeport

Operational Projects in the Maritimes

- Participated in COMFIT program with largest proportion of COMFIT wind projects in the province
- Participated in NB Power's LORESS program with projects throughout New Brunswick and three different community partners
- Continued development of wind and solar energy projects throughout the region
- Partnership with Woodstock First Nation on Wisokolamson Project that includes bursary program and solar PV project install within community
- COMFIT projects include partnerships with local partners (i.e. Scotian Wind Inc. and Scotian Windfields Inc.), with Scotian Wind Inc. representing local community investment



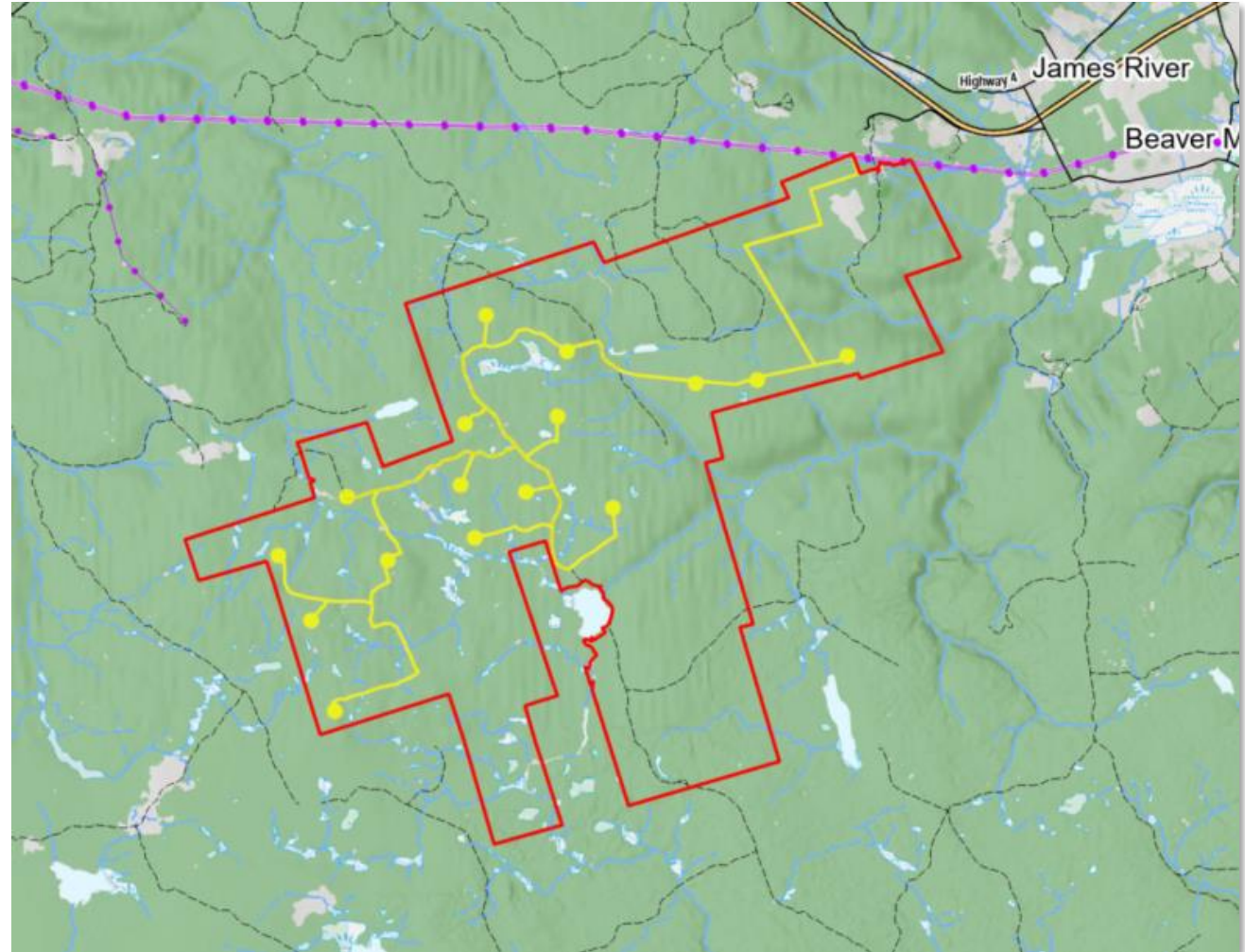


Wisokolamson Energy Project

- 18 MW / 5 wind turbine project in Albert County, New Brunswick
- Partnership with Woodstock First Nation
- Bursary program for Woodstock First Nation students
- Solar projects for Riverside-Albert and Woodstock First Nation in development
- First program under NB “LORESS” program to achieve Commercial Operation
 - Only 50% of the projects under the program were successful.

Weavers Mountain Energy Project

- 94.4 MW / 16 wind turbine project in Pictou and Antigonish Counties, Nova Scotia
- Partnership with Glooscap First Nation
- Capacity building initiatives established with Scotia Winds of Change and Women in Renewable Energy (WiRE)
- Community Liaison Committee (CLC) established
- One of five wind energy projects awarded under the Nova Scotia Rate-base Procurement in 2022



Green Choice Program

Green Choice Program

- Capacity in 2024 RFP is 350+ MW based on subscription results in 2023/2024.
- Focus on moving NS towards its 80% renewable energy by 2030 goal.
- Focus on benefits and capacity building for underrepresented communities in Nova Scotia.
- Additional scoring points to be given to equity initiatives with Mi'kmaq communities.
- Expect 1-2 subsequent procurements towards 2030.

Timeline

Notice of Intent to Bid: April 2

Inquiries Deadline: April 23

NSPI Feasibility Study Results: May 31

Proposal Submission Deadline: June 14

RFP Evaluation Period: June 14 – August 9

Shortlist Portfolio Notification: August 9

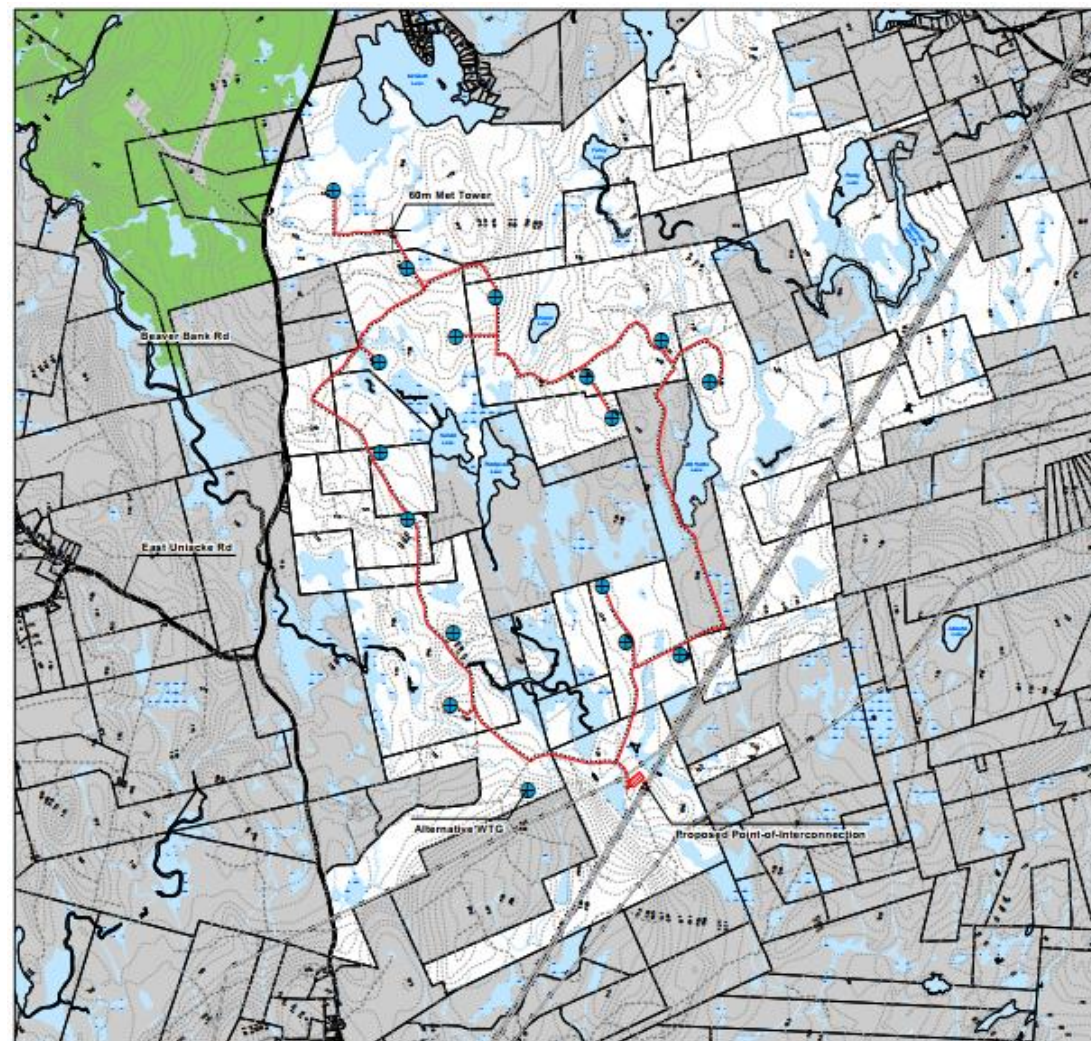
Shortlist Portfolio Interviews: August/September

GCP Portfolio Notification Date: September 6

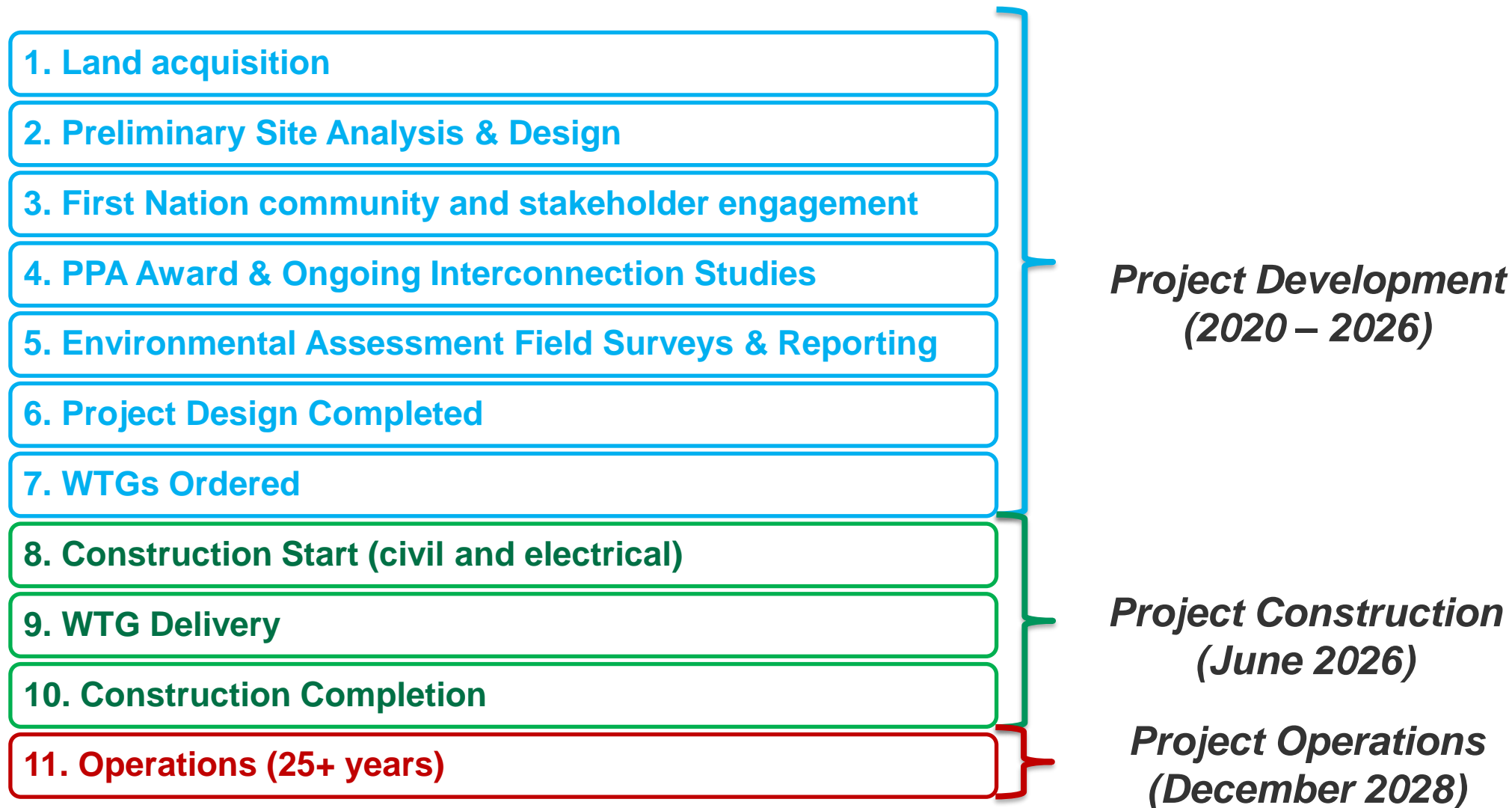
Target PPA Execution Date: December 6

Proposed Red Spruce Wind Energy Project

- Located East of Beaver Bank Road on private land Northeast of East Uniacke, 11 km away from Highway 101
- Total project capacity between 43.52 MW – 108.8 MW
- 6-16 wind turbines with capacity over 6.8 MW
- EA filing and approval (May/June 2025)
- Development permit application (July 2025)
- Public engagement session (March 19th)
- Anticipated start of construction (June 2026)
- Anticipated COD (Dec 2028)



Typical Project Tasks & Timeline



Proposed Project Partnership and Benefits

- SWEB is currently working with First Nation communities to establish partnerships and a partnership structure for its Green Choice Program project portfolio and will be **majority-owned** by one or more First Nation communities.
- Further details pertaining to the partnership will be released in the coming months.
- Percentage of project revenues allocated to CLC
- Positive impact on local businesses and will result in employment opportunities in addition to tax revenue for municipal, provincial, and federal governments
- Significant offset of carbon dioxide emissions from Nova Scotia's current electricity production
- A portion of the project's revenue will be allocated to a project-specific community liaison committee (CLC) annually and administered by this community organization.



Interested in more information?

How to proceed:

01

Designation of Point of Contact within the Community

One or more designated point(s) of contact within the Municipality for the topics:

- Support in stakeholder engagement
- Community benefits and events
- Local permitting requirements and support
- Provision of a letter of support for the project

02

Contact SWEB

Jason Parisé

Development Director

jason.parise@sweb.energy

+1 902 329 1494



W.E.B



Thank you for your time