

2023-12-21 11:39:21
KAPLAN_438_01426

FIRESMART

NOVA SCOTIA 2023





WHO I AM?

- 30 YEARS AS VOLUNTEER FIREFIGHTER
- 30 YEARS AS WILDLAND FIREFIGHTER
- 25 YEARS AS SEARCHER WITH SEARCH AND RESCUE
- WILDFIRE PREVENTION OFFICER
- PUBLIC INFORMATION OFFICER/FIRE INVESTIGATOR

UNDERSTANDING WILDFIRE BEHAVIOUR



FACTORS

- **Fuel** (Softwood/Hardwood/Grass/Slash) arrangement
- **Topography**
- **Weather** – Fronts/Winds, rain, humidity/temp
- **Aspect** – South (Warmer/Drier)North (Cooler/wetter)
- **Time of Year:**
 - Spring – Surface, frozen ground, ice in forests
 - Late Spring/Early Summer – Dry fine fuels, spring dip, fast moving, not deep
 - Mid to late Summer – Drought, deep burning, shorter days = lower temp/higher humidity but also hurricane season.



DIRECT FLAME



CONVECTIVE/RADIANT HEAT



FIRE EMBERS

FIRE IMPACTS ON STRUCTURES – METHODS

PORTERS LAKE FIRE 2008



Understanding Wildfire spread and devastation

- Westwood – Structure loss patchy
- Carmel Crescent – Large losses, slope, forest and head fire intensity
- Yankeeetown - Patchy

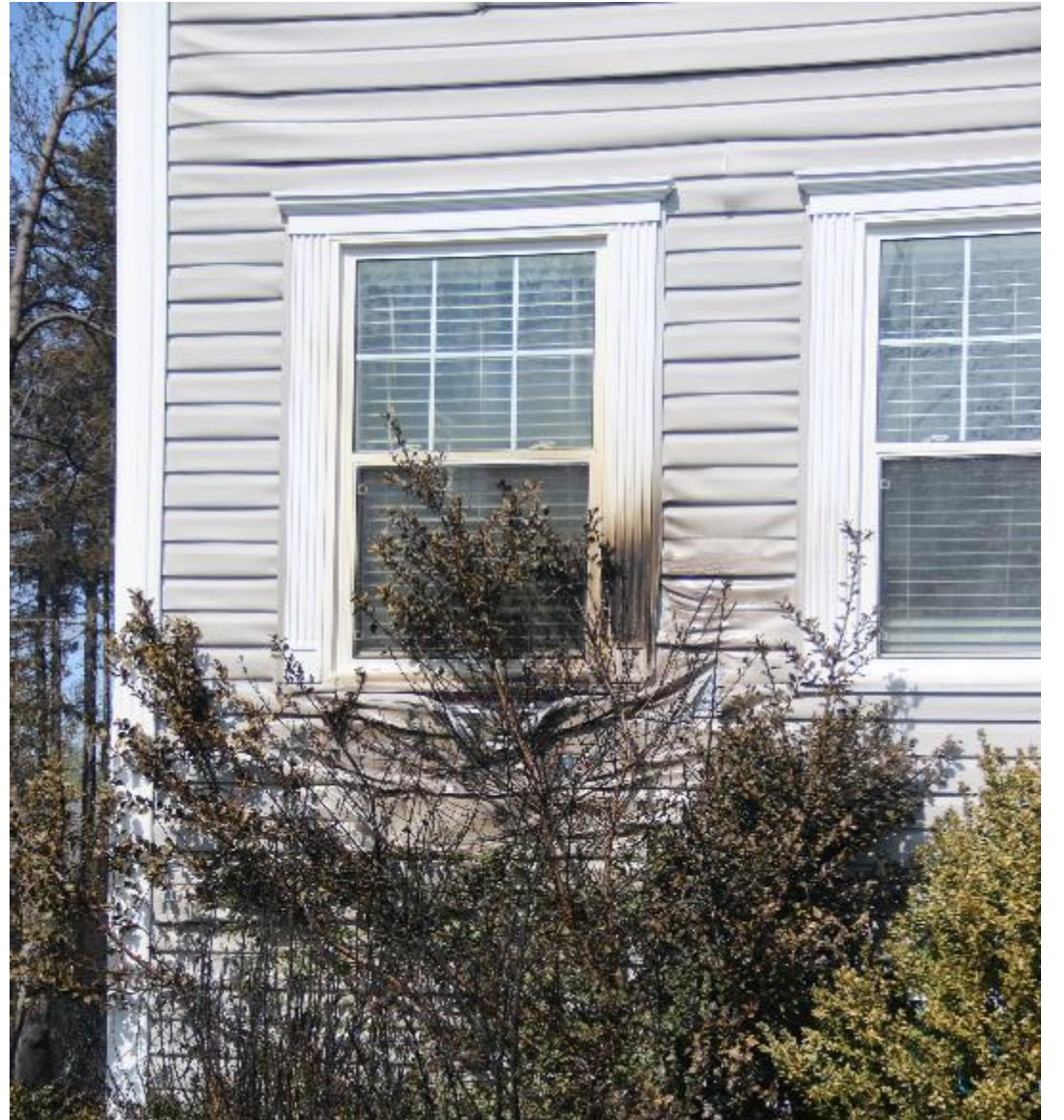
Challenges

- Wind Changes/Weather
- Drought
- Access
- Evacuations
- Resources
- Fuels
- Structures
- Firefighter Safety











HOME IGNITION ZONE

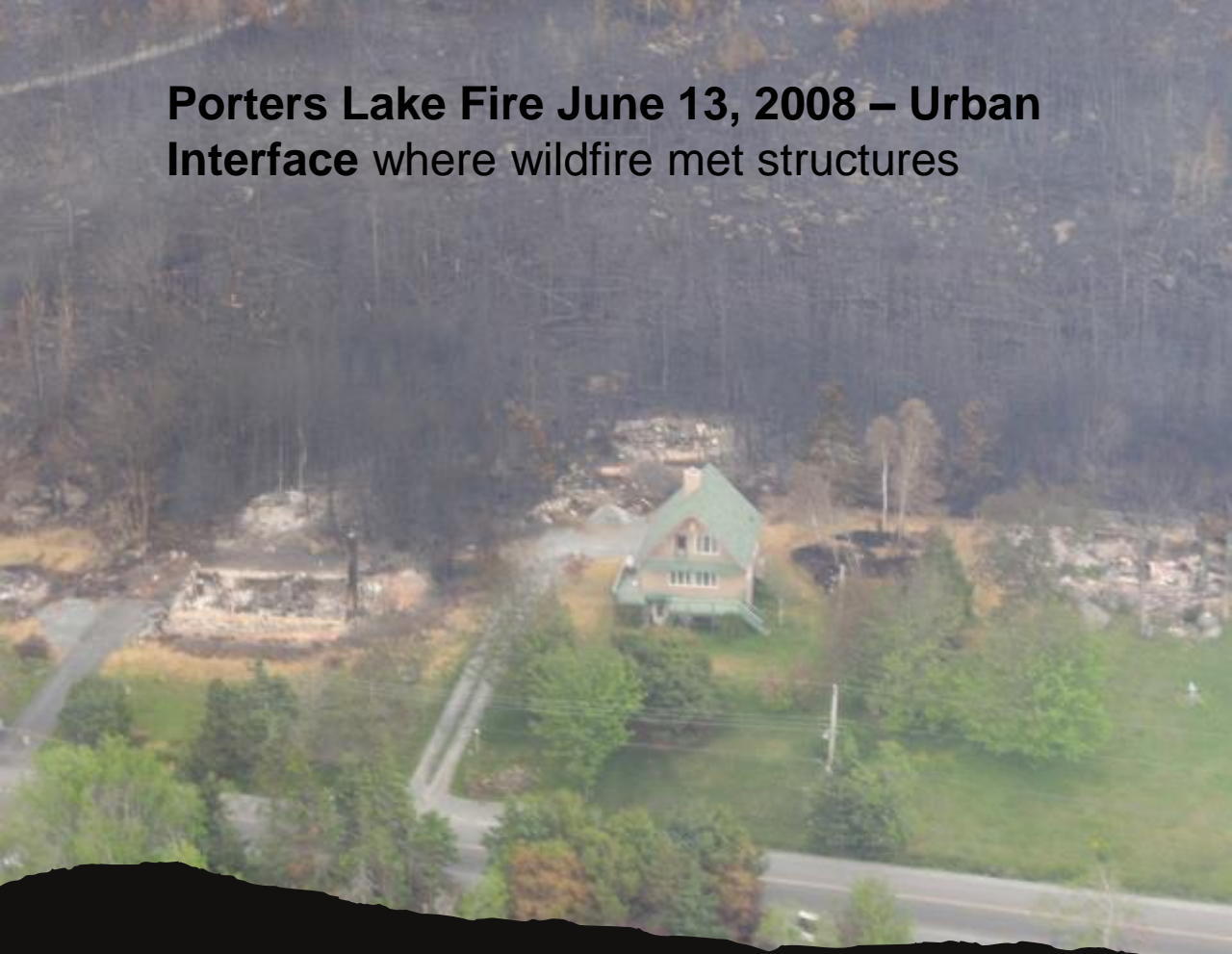


FireSmart, Intelli-feu and other associated Marks are trademarks of the Canadian Interagency Forest Fire Centre (CIFFC).

FIRE IMPACTS ON STRUCTURES – HOME IGNITION ZONES

- 0-1.5m – Non-Combustible
- 1.5m-10m – Reduced combustibles (pruning, thinning, mowing and raking, moving wood etc)
- 10m-30m – Increasing the barrier with same techniques, promoting hardwood, mowing if possible, removing dead/dying and SW

Porters Lake Fire June 13, 2008 – Urban Interface where wildfire met structures



Spryfield Fire April 29, 2009 – Fringe is where there are separated structures



**FIRE IMPACTS ON STRUCTURES- W.U.I
(wildland urban interface)**

NEIGHBOURHOOD RECOGNITION PROGRAM

FIRESMART™ NEIGHBOURHOOD PLAN

NEIGHBOURHOOD INFORMATION

Neighbourhood Name	Neighbourhood FireSmart Committee
Committee Chair/Champion	FireSmart Committee Chair/Champion
Committee Member 1	FireSmart Committee Member 1
Committee Member 2	FireSmart Committee Member 2
FireSmart Representative, Town/Village	Local FireSmart Representative
Town Chief, Town/Village	Fire Chief

FIRESMART NEIGHBOURHOOD PLAN

Background:

Background information

The Plan Is:

Plan information



FIRE SMART COMMUNITIES – ASSESS/PLAN AND ACTION

- Looks at neighbourhoods or subdivisions as a whole and gives percentages to evaluate
- Looks at water supply, forest stand and management, home construction, past fire occurrences, recreational uses, critical infrastructure, access
- Pull together a report and plan and action items, present to community.



FIRE SMART COMMUNITIES – PREPAREDNESS DAY AND RECOGNITION PROGRAM



Applications for Prep Day grant \$500 open in fall
Neighbourhood Recognition



FIRE SMART COMMUNITIES – LOCAL FIRE SMART REPRESENTATIVE/CHAMPIONS

- LFR – Is a first responder or agency rep who has taken the one-day training in community risk assessments
- With the Provincial Liaison (ME) we complete an assessment.
- Compile a report and plan of action
- Plan a community cleanup day/larger scale project
- Track volunteer hours and resources used/rented etc.
- Apply for Community recognition status

FIRE SMART HOMES- ADVANCED ASSESSMENTS TRAINING

- 45 Trained Assessors
- 3 Agencies (HRM Fire, CMM, DNRR)
- Individual homes assessed
- Private report goes to only homeowner.
- Looks at home construction, access, forest stand and proximity, landscaping.



FIRE SMART LANDSCAPES – PLANTS & MULCH

- High Water Content
- Low Shed
- Drought Tolerant
- Avoid evergreen shrubs, mulch





FIRE SMART LANDSCAPES – FOREST AND LANDSCAPE

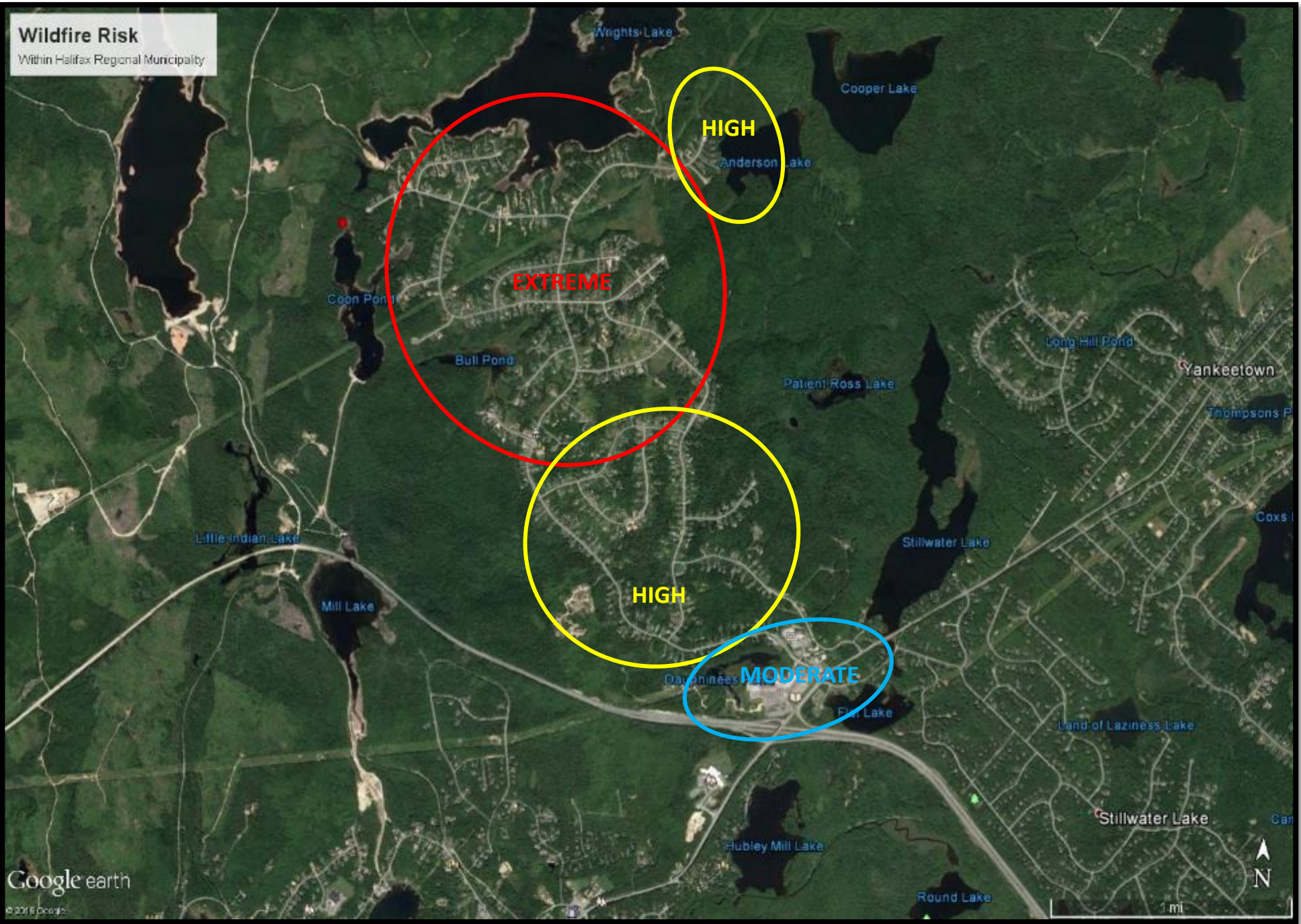
- Hardwoods – Low risk
- Mixedwoods – Medium/high depending on percent of dead
- Softwoods – Most fire receptive (pitch/resin)
- Clearcuts – Approximately 10 fires per season/low risk
- Grass/Bog – High risk of control/injury

Hurricane/Wind Damage Issues

- Species and arrangement dependent on how much more it will spread (Acts like S3 fuel)
- After the fine fuels (needles/leaves) die, the logs are less of a risk and eventually contain more moisture.
- Access/Firefighter safety
- Less recreational use or operations in – So less human related fire but chance for lightning. Where we may have issues is from machinery and cleanup/sparks
- Key messages for public is burn restrictions/mitigation – where you burn materials or provide alternatives.



Wildfire Risk
Within Halifax Regional Municipality



Westwood Hills & Area

- Based on Home Construction
- Proximity to woods
- Fuel types
- Recreational usage
- Past fire occurrences
- Landscaping Practises



FIRE SMART FIRST RESPONDERS - PREPLANNING

- If you are doing structural preplanning, you can add in home/business assessment
- Let's you know where your highest risk area of response zone are
- This helps in focusing resources and tactics.
- You can let community know how they fared out for more awareness and mitigation.



FIRE SMART FIRST RESPONDERS - TRAINING

- Community Champion Workshop
- Local FireSmart Representative training
- Advanced Home Assessments
- Community Risk assessments and public workshops

FIRE SMART NOVA SCOTIA

CMM – Trial with Bear River

- Community Assessment/home assessments
- Clean-up around community centre, and other large buildings
- Fuel Break around boundary
- Road and Civic Signs
- Fire and Chainsaw Training
- Awareness sessions
- Applied for FireSmart Community status
- Gold River, Wildcat and Ponhook will be doing similar work with a new grant



FireSmart Nova Scotia

Halifax Regional Fire

- Implementing a new FireSmart Strategy
- Trained firefighters in Advanced Assessments
- Pulling together a plan to implement assessments and action
- Westwood Hills, Bayside ongoing assessment work (dry hydrants, mitigation plan)

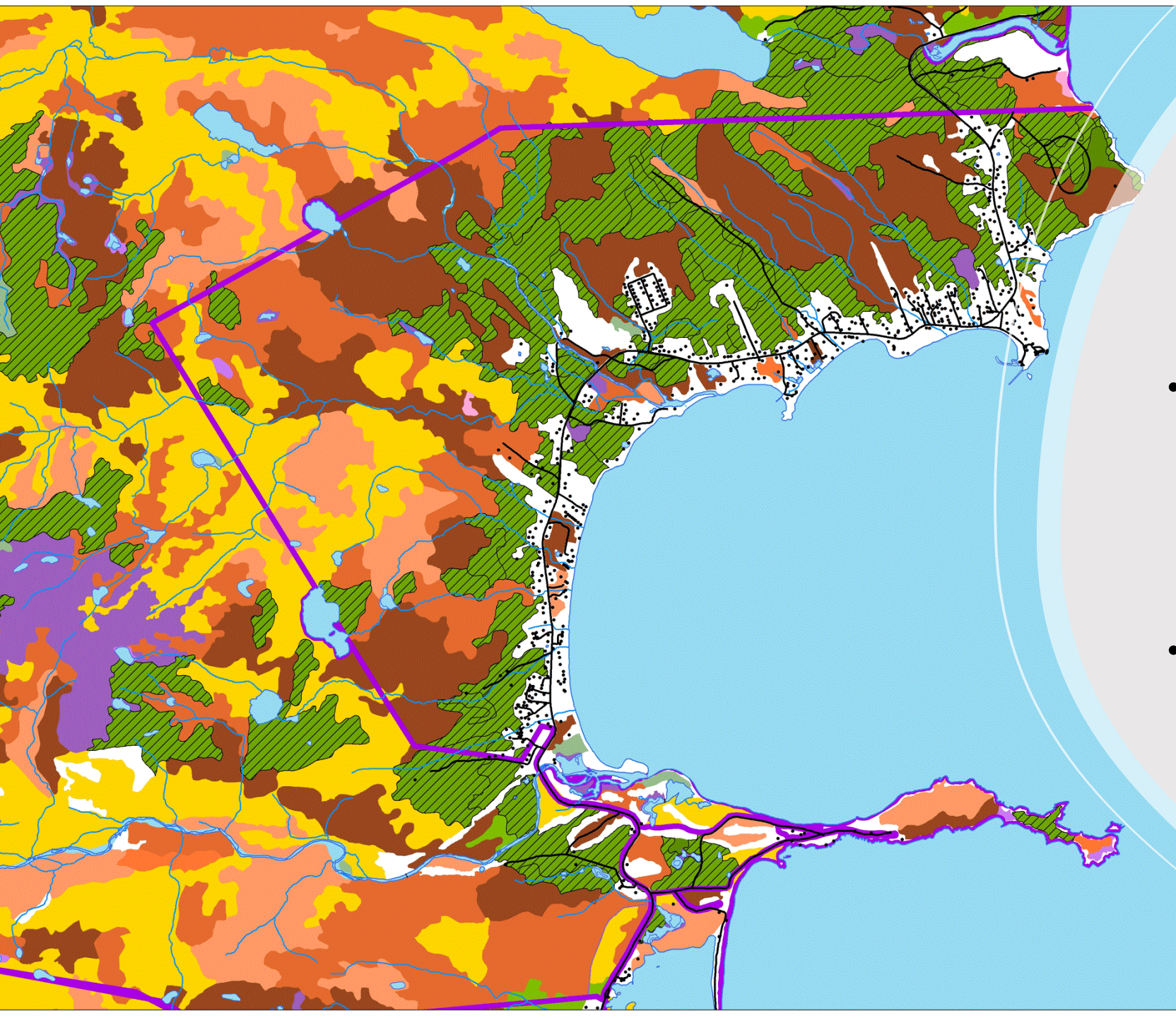




West Hants & Lunenburg

- Led by LFR Jennifer Daniels
- Vaughan area Falls lake, Chateau Village and Chalet Hamlet all working together to complete community assessments.
- Chateau village awarded \$10,000 grant for work
- Aspotogan, Chester area ongoing work much of the work in Lunenburg is Bruce Blackwood/Angela Henhoeffler with EMO pushing.





FIRESMART PARKS CANADA AND DND

- Parks Canada has completed mitigation in Highlands and is working at Seaside adjunct and Kejimikujik Parks, working with communities.
- DND has completed work around magazine hill and some other bases/lands to reduce fire spread in and out.





FIRESMART

101

A FREE
1 HOUR COURSE

REDUCE YOUR HOME'S VULNERABILITY TO WILDLAND FIRE

LEARN ABOUT:

-  FireSmart and FireSmart principles
-  the seven FireSmart disciplines
-  the Wildland Urban Interface
-  the Home Ignition Zone



FIRESMART AWARDS

Community Prep Day Grants \$500 2023

- Acadia First Nation - Western NS
- Chalet Hamlet - West Hants
- Falls Lake Resort - West Hants
- Lake Charlotte Heritage Village - HRM
- North Preston - HRM
- The Pointe at Aspotogan - Lunenburg County

**Wawanesa Insurance - \$10-15000 grant
Chateau Village in West Hants**

Climate Change and other grants



NOVA SCOTIA

FireSmart

WHERE CAN YOU FIND RESOURCES

- FireSmart Canada or Nova Scotia Facebook Pages
- www.firesmartcanada.ca
- <https://experience.arcgis.com/experience/0ee935539ce5495d86ce607d11a57a30> - Nova Scotia Wildfire Viewer
- <https://novascotia.ca/burnsafe/>
- www.smokeybear.com
- <https://firesmartbc.ca/ember/>
- [\(96\) Mi'kmaq Wildfire Prevention and Mitigation - Bear River NS - YouTube](#)

FireSmart Nova Scotia

641 likes • 937 followers



Promote



THANK-YOU

Kara McCurdy
Kara.mccurdy@Novascotia.ca
902-758-5099