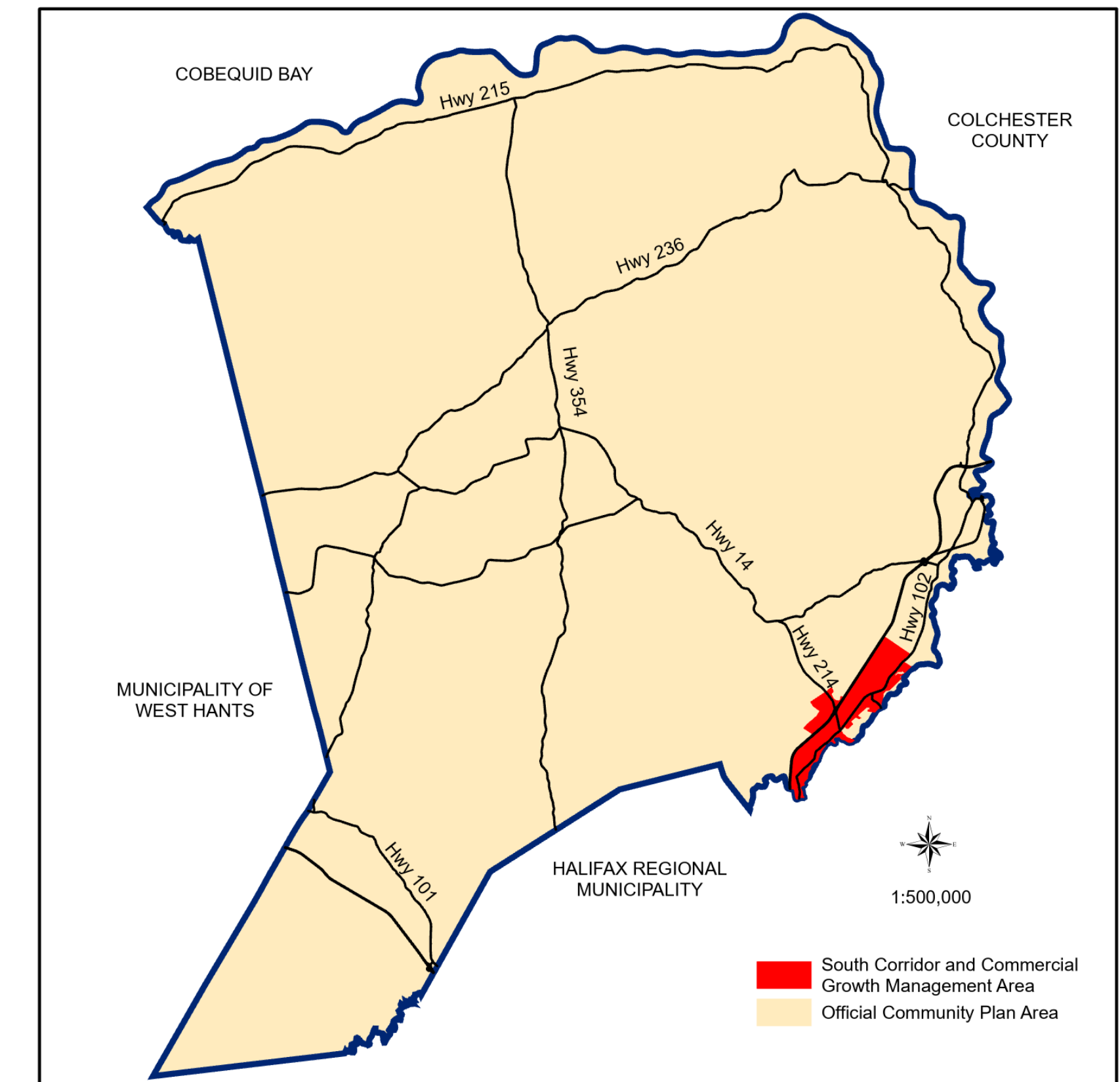


Approved on:
Amended on:



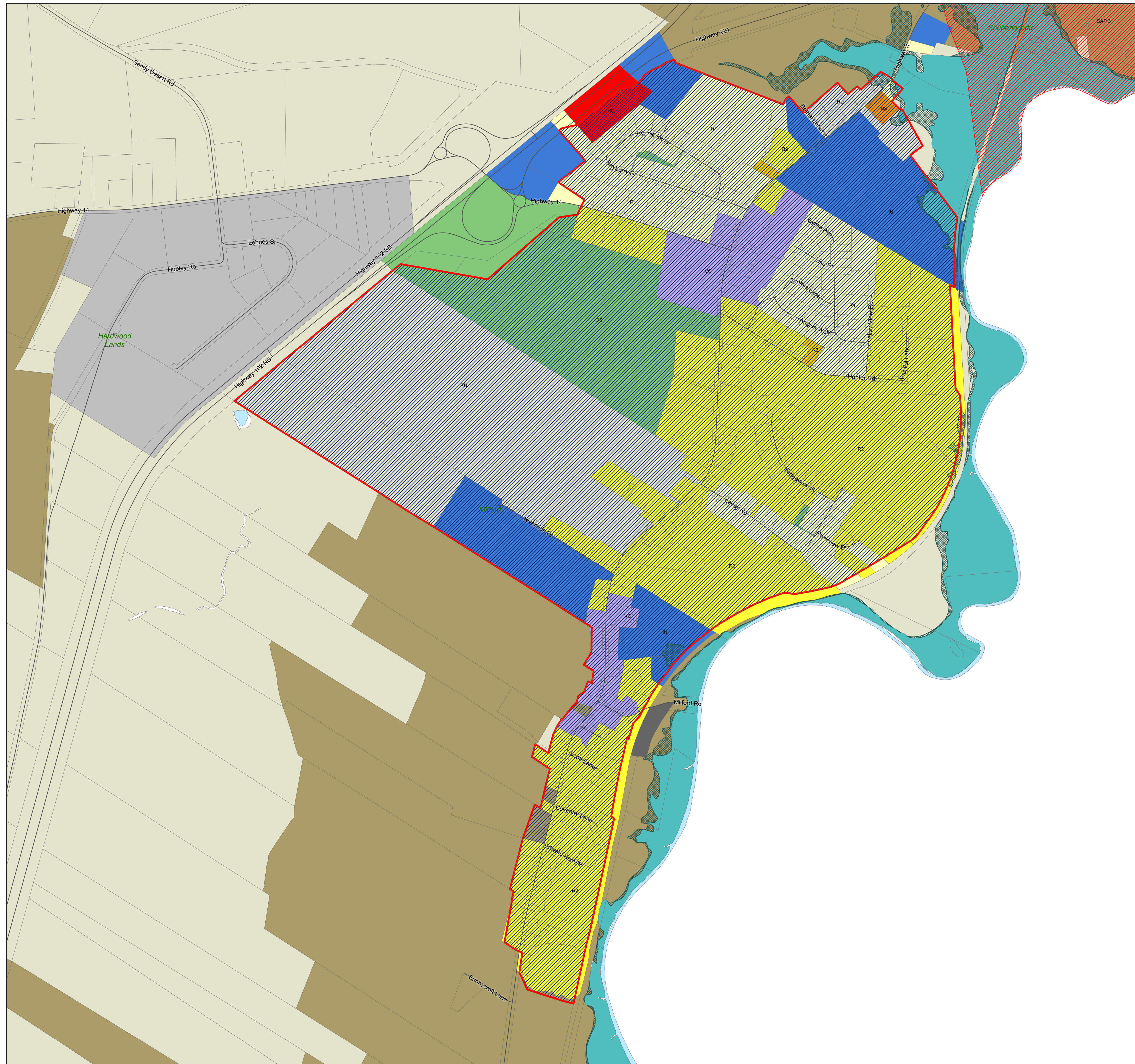
| RESIDENTIAL | | COMMERCIAL | |
|---------------|--|---------------|---|
| | CR - Country Residential | | GC - General Commercial |
| | LR - Lakeshore Residential | | HC - Highway Commercial |
| | R1 - Established Residential Neighbourhood | | RC - Regional Commercial |
| | R2 - Two Dwelling Unit Residential | | BP - Business Park |
| | MH - Mini-Home | | IC - Industrial Commercial |
| MIXED USE | | RURAL | |
| | R2-T - Townhouse | | AR - Agricultural Reserve |
| | R3 - Multiple Unit Dwelling | | RU - Rural Use |
| | MC - Mixed Use Centre | | RU-2 - Rural Use North |
| | VC - Village Core | | RCDD - Rural Comprehensive Development District |
| | WCDD - Walkable Comprehensive Development District | | |
| COMMUNITY USE | | ENVIRONMENTAL | |
| | IU - Institutional Use | | HF - High Risk Floodplain |
| | OS - Open Space | | MF - Moderate Risk Floodplain Overlay |
| | | | WG - Watercourse Greenbelt |
| OTHER | | | WS - Water Supply |
| | IR-14 - Indian Brook 14 | | WI - Water Intake Overlay |
| | Growth Management Areas / Growth Reserve Areas | | WP - Water Protection Overlay |
| | | | SAP-1 - Shubenacadie Aquifer Protection Overlay |
| | | | SAP-2 - Shubenacadie Aquifer Protection Overlay |
| | | | SAP-3 - Shubenacadie Aquifer Protection Overlay |
| | | | MGW - Milford Groundwater Overlay |
| | | | FF - Fundy Flood Risk Overlay |
| | | | FE - 2050 Fundy Erosion Overlay |
| | | | FE - 2100 Fundy Erosion Overlay |

1:16,000

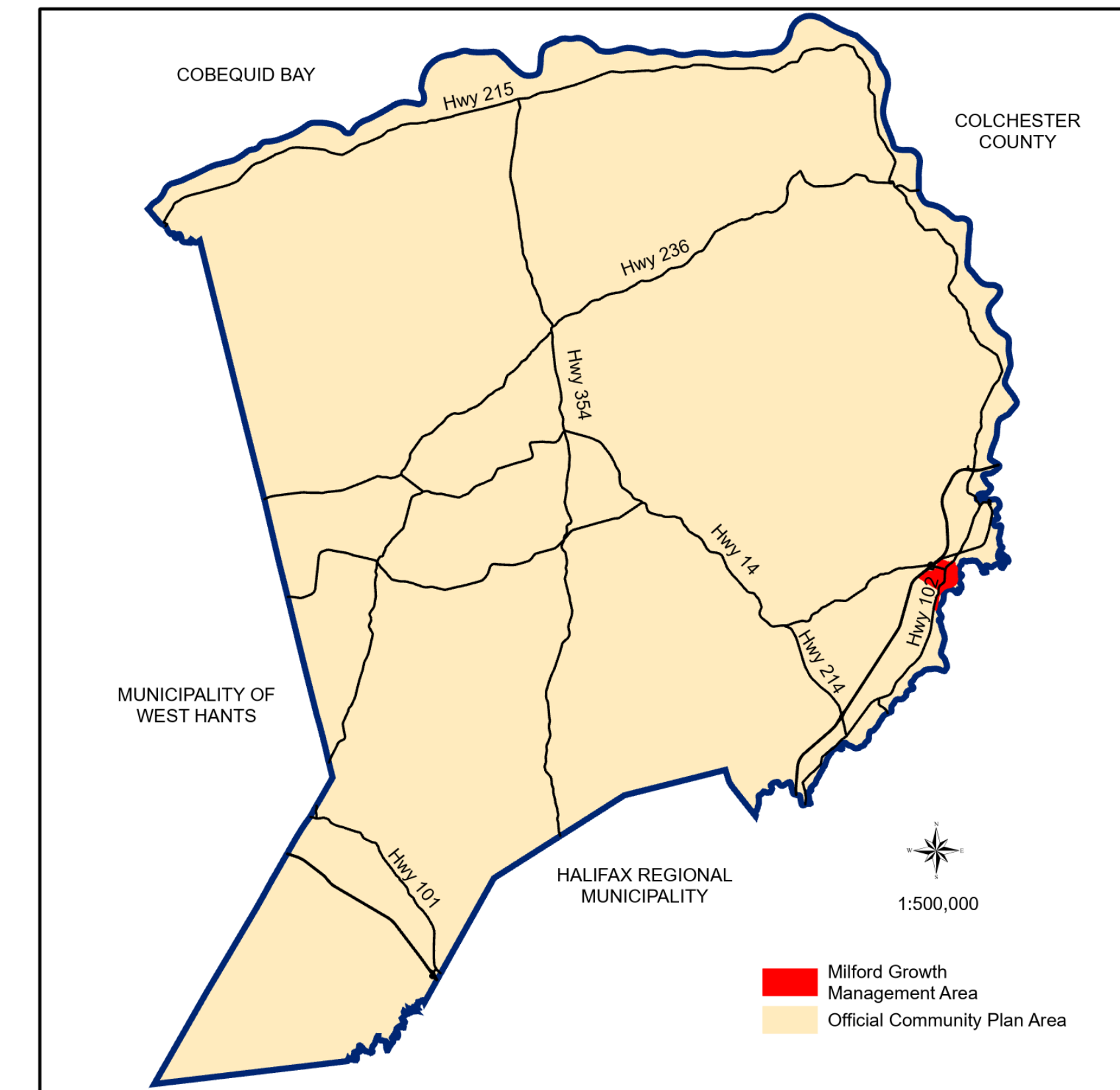


This map was produced by the Planning & Development Department and shall be used as a graphical representation of property boundaries. It is not intended to be used as a survey plan or for legal descriptions.



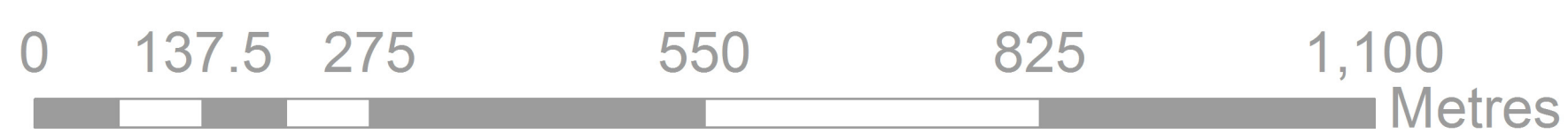


Approved on:
Amended on:



| RESIDENTIAL | | COMMERCIAL | |
|---------------|--|---------------|---|
| | CR - Country Residential | | GC - General Commercial |
| | LR - Lakeshore Residential | | HC - Highway Commercial |
| | R1 - Established Residential Neighbourhood | | RC - Regional Commercial |
| | R2 - Two Dwelling Unit Residential | | BP - Business Park |
| | MH - Mini-Home | | IC - Industrial Commercial |
| MIXED USE | | RURAL | |
| | R2-T - Townhouse | | AR - Agricultural Reserve |
| | R3 - Multiple Unit Dwelling | | RU - Rural Use |
| | MC - Mixed Use Centre | | RU-2 - Rural Use North |
| | VC - Village Core | | RCDD - Rural Comprehensive Development District |
| | WCDD - Walkable Comprehensive Development District | | |
| COMMUNITY USE | | ENVIRONMENTAL | |
| | IU - Institutional Use | | HF - High Risk Floodplain |
| | OS - Open Space | | MF - Moderate Risk Floodplain Overlay |
| OTHER | | | WG - Watercourse Greenbelt |
| | IR-14 - Indian Brook 14 | | WS - Water Supply |
| | Growth Management Areas / Growth Reserve Areas | | WI - Water Intake Overlay |
| | | | WP - Water Protection Overlay |
| | | | SAP-1 - Shubenacadie Aquifer Protection Overlay |
| | | | SAP-2 - Shubenacadie Aquifer Protection Overlay |
| | | | SAP-3 - Shubenacadie Aquifer Protection Overlay |
| | | | MGW - Milford Groundwater Overlay |
| | | | FF - Fundy Flood Risk Overlay |
| | | | FE - 2050 Fundy Erosion Overlay |
| | | | FE - 2100 Fundy Erosion Overlay |

1: 5,500

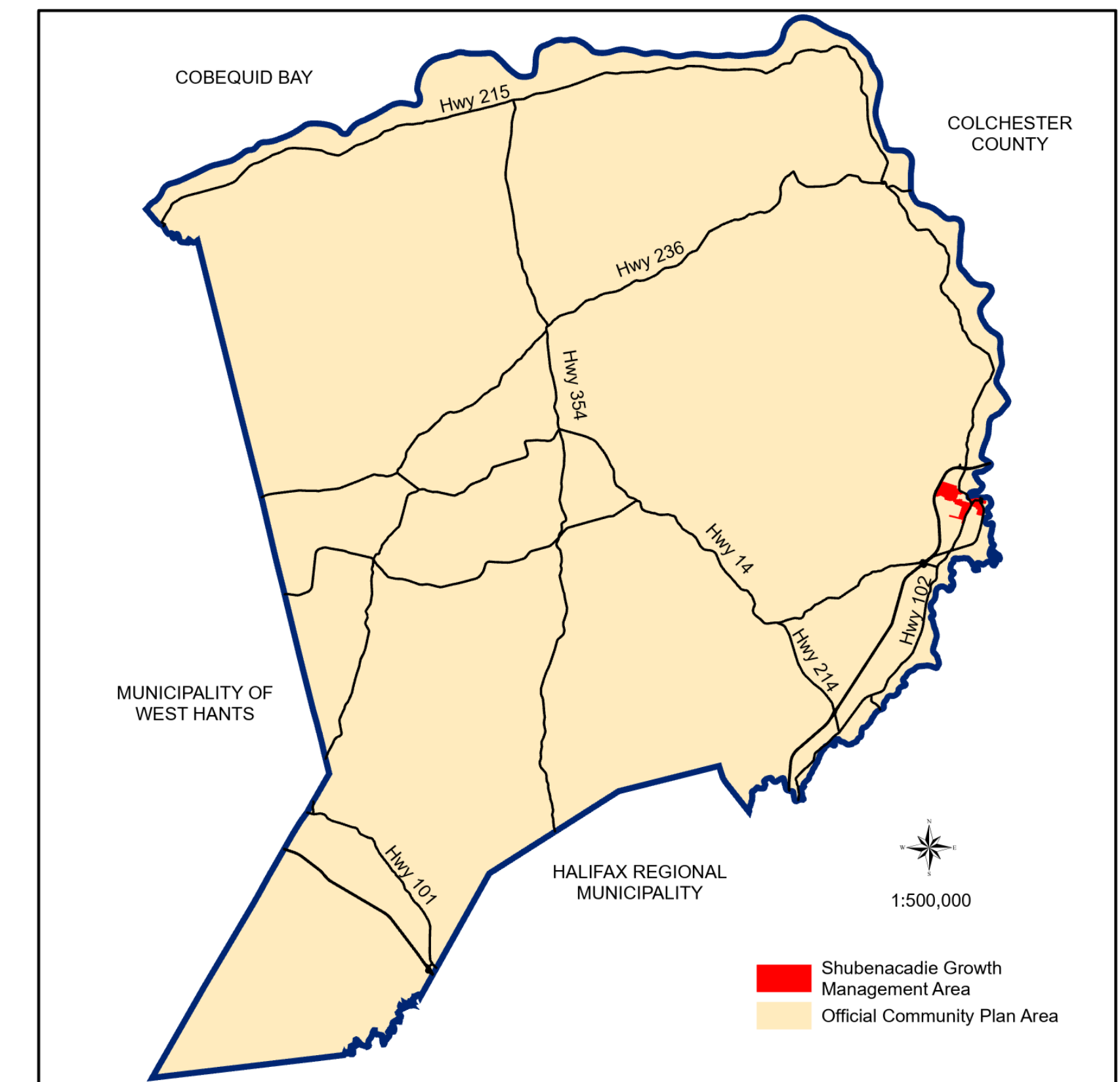


This map was produced by the Planning & Development Department and shall be used as a graphical representation of property boundaries. It is not intended to be used as a survey plan or for legal descriptions.

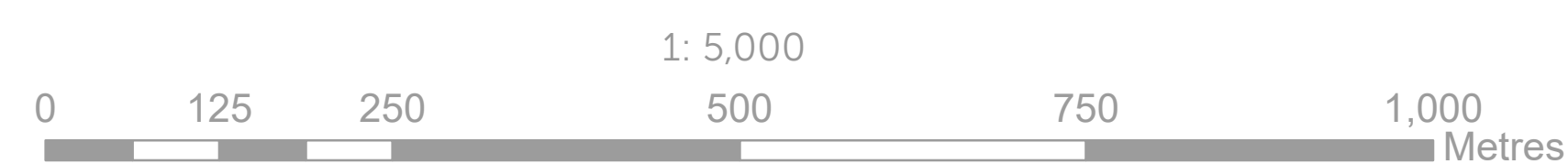




Approved on:
Amended on:

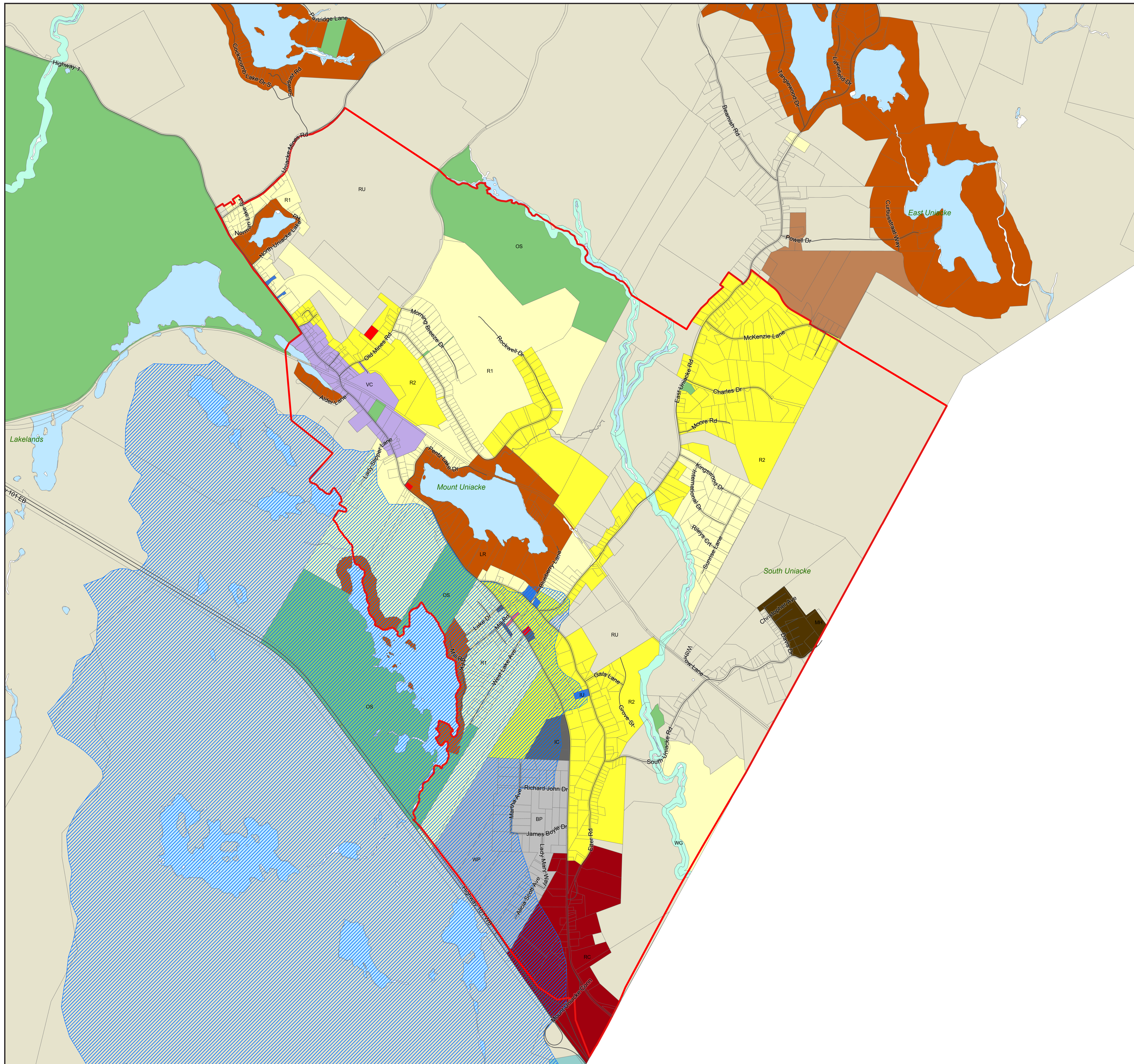


| RESIDENTIAL | | COMMERCIAL | |
|---------------|--|---------------|---|
| | CR - Country Residential | | GC - General Commercial |
| | LR - Lakeshore Residential | | HC - Highway Commercial |
| | R1 - Established Residential Neighbourhood | | RC - Regional Commercial |
| | R2 - Two Dwelling Unit Residential | | BP - Business Park |
| | MH - Mini-Home | | IC - Industrial Commercial |
| MIXED USE | | RURAL | |
| | R2-T - Townhouse | | AR - Agricultural Reserve |
| | R3 - Multiple Unit Dwelling | | RU - Rural Use |
| | MC - Mixed Use Centre | | RU-2 - Rural Use North |
| | VC - Village Core | | RCDD - Rural Comprehensive Development District |
| | WCCD - Walkable Comprehensive Development District | | |
| COMMUNITY USE | | ENVIRONMENTAL | |
| | IU - Institutional Use | | HF - High Risk Floodplain |
| | OS - Open Space | | MF - Moderate Risk Floodplain Overlay |
| | | | WG - Watercourse Greenbelt |
| OTHER | | | WS - Water Supply |
| | IR-14 - Indian Brook 14 | | WI - Water Intake Overlay |
| | Growth Management Areas / Growth Reserve Areas | | WP - Water Protection Overlay |
| | | | SAP-1 - Shubenacadie Aquifer Protection Overlay |
| | | | SAP-2 - Shubenacadie Aquifer Protection Overlay |
| | | | SAP-3 - Shubenacadie Aquifer Protection Overlay |
| | | | MGW - Milford Groundwater Overlay |
| | | | FF - Fundy Flood Risk Overlay |
| | | | FE - 2050 Fundy Erosion Overlay |
| | | | FE - 2100 Fundy Erosion Overlay |

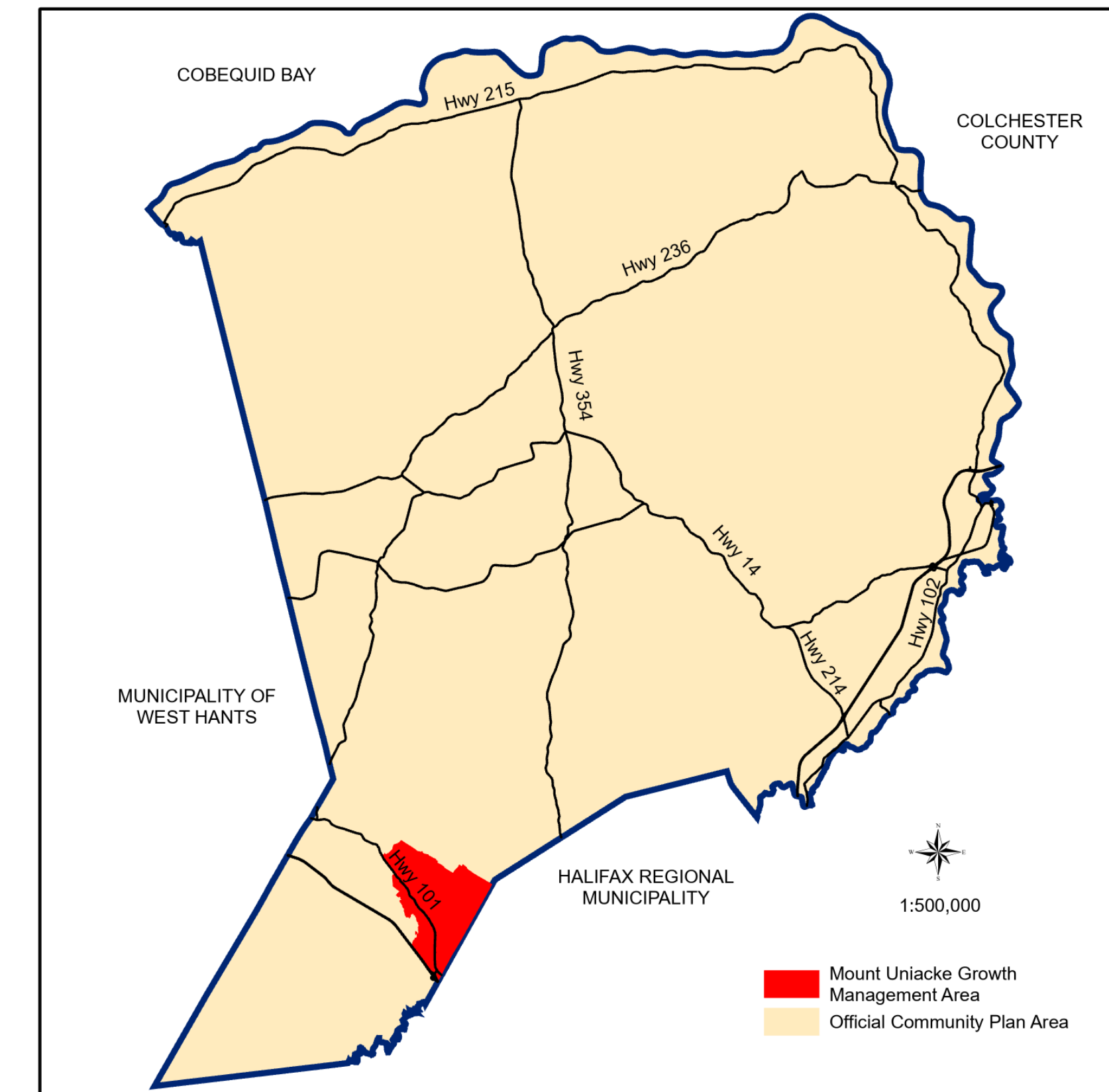


This map was produced by the Planning & Development Department and shall be used as a graphical representation of property boundaries. It is not intended to be used as a survey plan or for legal descriptions.





Approved on:
Amended on:



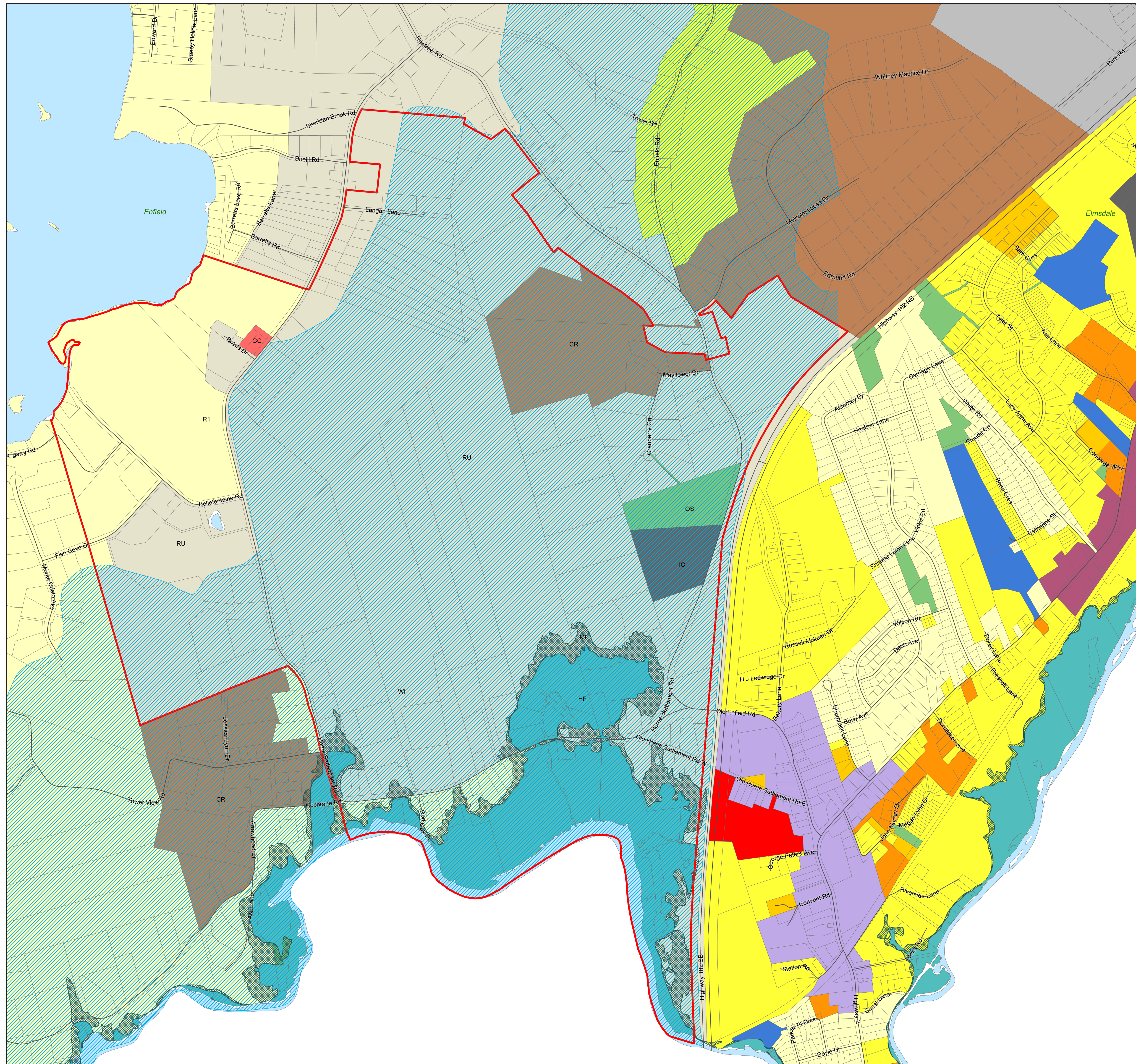
| RESIDENTIAL | | COMMERCIAL | |
|---------------|--|---------------|---|
| | CR - Country Residential | | GC - General Commercial |
| | LR - Lakeshore Residential | | HC - Highway Commercial |
| | R1 - Established Residential Neighbourhood | | RC - Regional Commercial |
| | R2 - Two Dwelling Unit Residential | | BP - Business Park |
| | MH - Mini-Home | | IC - Industrial Commercial |
| MIXED USE | | RURAL | |
| | R2-T - Townhouse | | AR - Agricultural Reserve |
| | R3 - Multiple Unit Dwelling | | RU - Rural Use |
| | MC - Mixed Use Centre | | RU-2 - Rural Use North |
| | VC - Village Core | | RCDD - Rural Comprehensive Development District |
| | WCDD - Walkable Comprehensive Development District | | |
| COMMUNITY USE | | ENVIRONMENTAL | |
| | IU - Institutional Use | | HF - High Risk Floodplain |
| | OS - Open Space | | MF - Moderate Risk Floodplain Overlay |
| | | | WG - Watercourse Greenbelt |
| OTHER | | | WS - Water Supply |
| | IR-14 - Indian Brook 14 | | WI - Water Intake Overlay |
| | Growth Management Areas / Growth Reserve Areas | | WP - Water Protection Overlay |
| | | | SAP-1 - Shubenacadie Aquifer Protection Overlay |
| | | | SAP-2 - Shubenacadie Aquifer Protection Overlay |
| | | | SAP-3 - Shubenacadie Aquifer Protection Overlay |
| | | | MGW - Milford Groundwater Overlay |
| | | | FF - Fundy Flood Risk Overlay |
| | | | FE - 2050 Fundy Erosion Overlay |
| | | | FE - 2100 Fundy Erosion Overlay |

1: 15,000

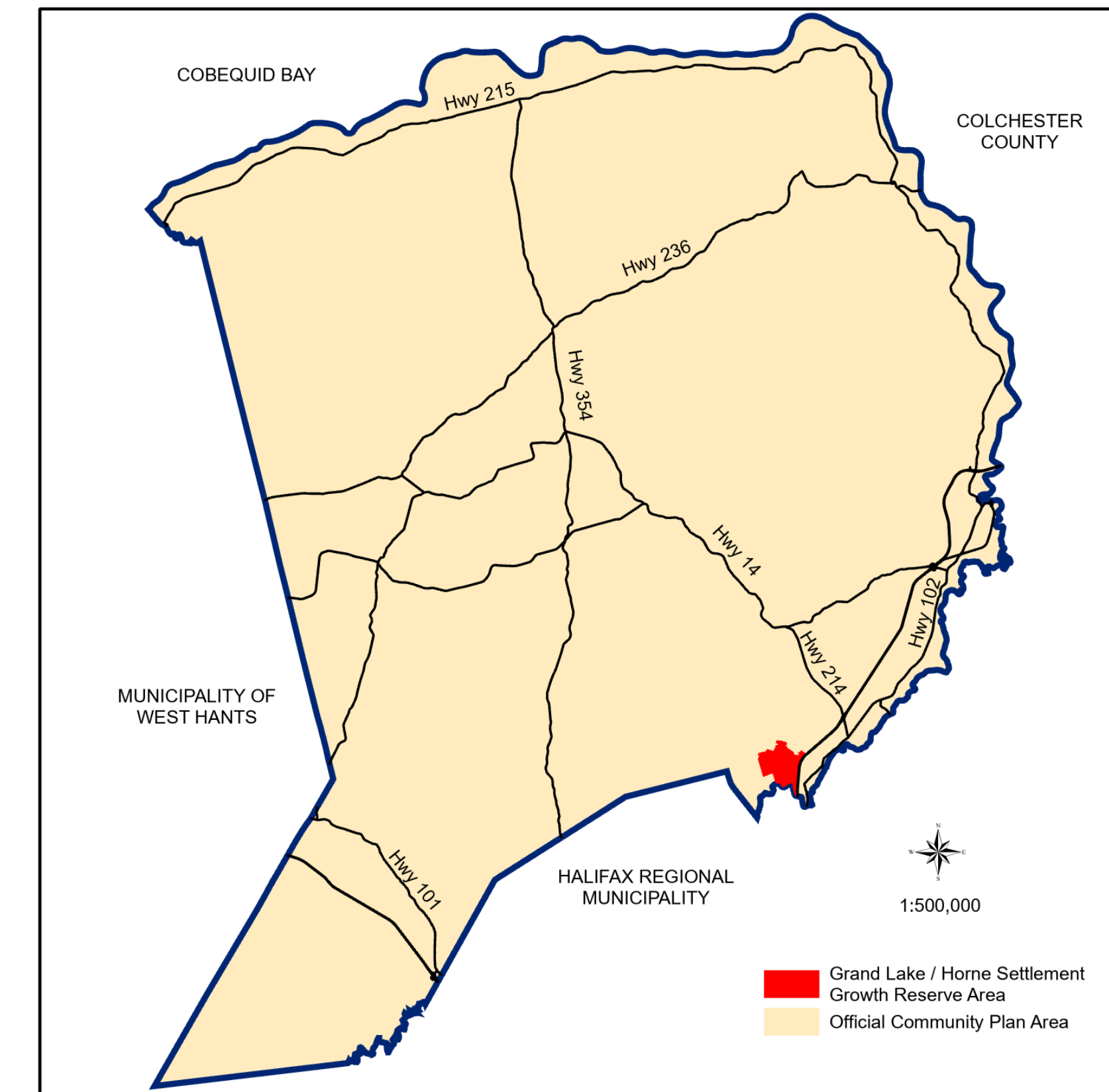


This map was produced by the Planning & Development Department and shall be used as a graphical representation of property boundaries. It is not intended to be used as a survey plan or for legal descriptions.





Approved on:
Amended on:



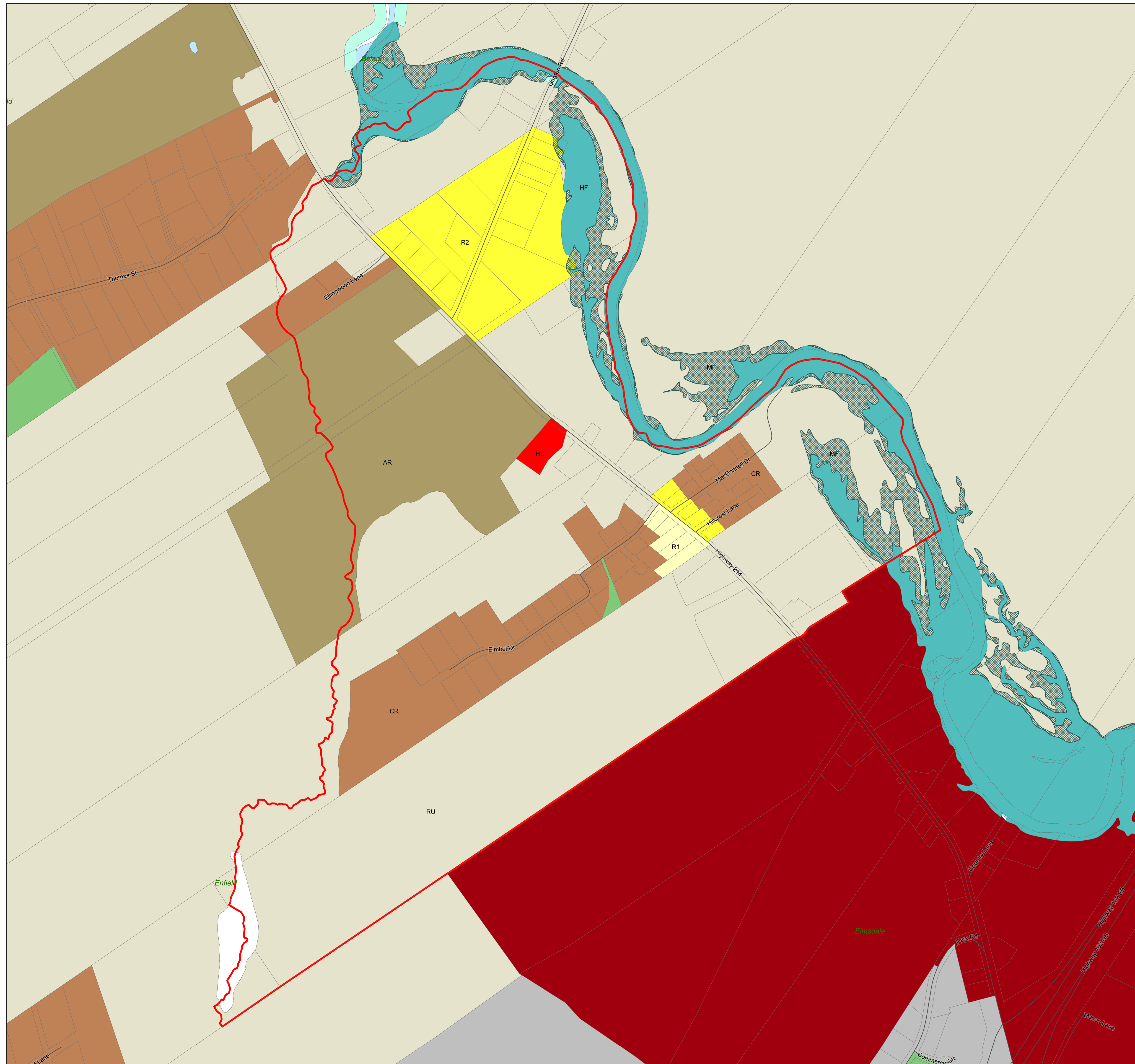
| RESIDENTIAL | | COMMERCIAL | |
|--|------------------------------------|---|---|
| CR - Country Residential | LR - Lakeshore Residential | GC - General Commercial | HC - Highway Commercial |
| R1 - Established Residential Neighbourhood | R2 - Two Dwelling Unit Residential | RC - Regional Commercial | BP - Business Park |
| MH - Mini-Home | | IC - Industrial Commercial | |
| MIXED USE | | RURAL | |
| R2-T - Townhouse | R3 - Multiple Unit Dwelling | AR - Agricultural Reserve | RU - Rural Use |
| MC - Mixed Use Centre | VC - Village Core | RU-2 - Rural Use North | RCDD - Rural Comprehensive Development District |
| WCDD - Walkable Comprehensive Development District | | | |
| COMMUNITY USE | | ENVIRONMENTAL | |
| IU - Institutional Use | OS - Open Space | HF - High Risk Floodplain | MF - Moderate Risk Floodplain Overlay |
| | | WG - Watercourse Greenbelt | WS - Water Supply |
| OTHER | | | |
| IR-14 - Indian Brook 14 | | WI - Water Intake Overlay | WP - Water Protection Overlay |
| Growth Management Areas / Growth Reserve Areas | | SAP-1 - Shubenacadie Aquifer Protection Overlay | SAP-2 - Shubenacadie Aquifer Protection Overlay |
| | | SAP-3 - Shubenacadie Aquifer Protection Overlay | MGW - Milford Groundwater Overlay |
| | | FF - Fundy Flood Risk Overlay | FE - 2050 Fundy Erosion Overlay |
| | | | FE - 2100 Fundy Erosion Overlay |

1: 6,000

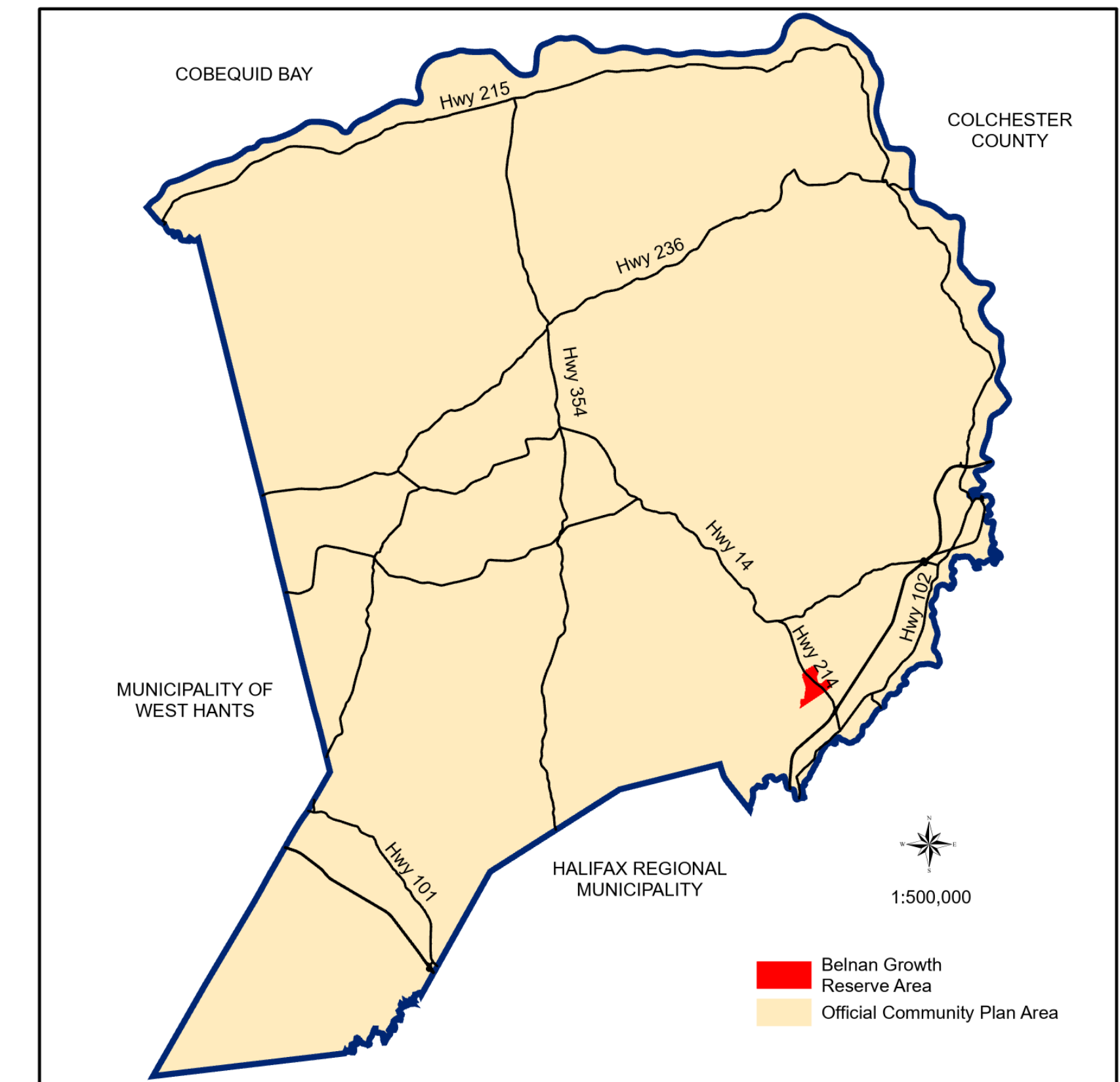


This map was produced by the Planning & Development Department and shall be used as a graphical representation of property boundaries. It is not intended to be used as a survey plan or for legal descriptions.





Approved on:
Amended on:



| RESIDENTIAL | | COMMERCIAL | |
|---------------|--|---------------|---|
| | CR - Country Residential | | GC - General Commercial |
| | LR - Lakeshore Residential | | HC - Highway Commercial |
| | R1 - Established Residential Neighbourhood | | RC - Regional Commercial |
| | R2 - Two Dwelling Unit Residential | | BP - Business Park |
| | MH - Mini-Home | | IC - Industrial Commercial |
| MIXED USE | | RURAL | |
| | R2-T - Townhouse | | AR - Agricultural Reserve |
| | R3 - Multiple Unit Dwelling | | RU - Rural Use |
| | MC - Mixed Use Centre | | RU-2 - Rural Use North |
| | VC - Village Core | | RCDD - Rural Comprehensive Development District |
| | WCDD - Walkable Comprehensive Development District | | |
| COMMUNITY USE | | ENVIRONMENTAL | |
| | IU - Institutional Use | | HF - High Risk Floodplain |
| | OS - Open Space | | MF - Moderate Risk Floodplain Overlay |
| OTHER | | | WG - Watercourse Greenbelt |
| | IR-14 - Indian Brook 14 | | WS - Water Supply |
| | Growth Management Areas / Growth Reserve Areas | | WI - Water Intake Overlay |
| | | | WP - Water Protection Overlay |
| | | | SAP-1 - Shubenacadie Aquifer Protection Overlay |
| | | | SAP-2 - Shubenacadie Aquifer Protection Overlay |
| | | | SAP-3 - Shubenacadie Aquifer Protection Overlay |
| | | | MGW - Milford Groundwater Overlay |
| | | | FF - Fundy Flood Risk Overlay |
| | | | FE - 2050 Fundy Erosion Overlay |
| | | | FE - 2100 Fundy Erosion Overlay |

1: 4,500

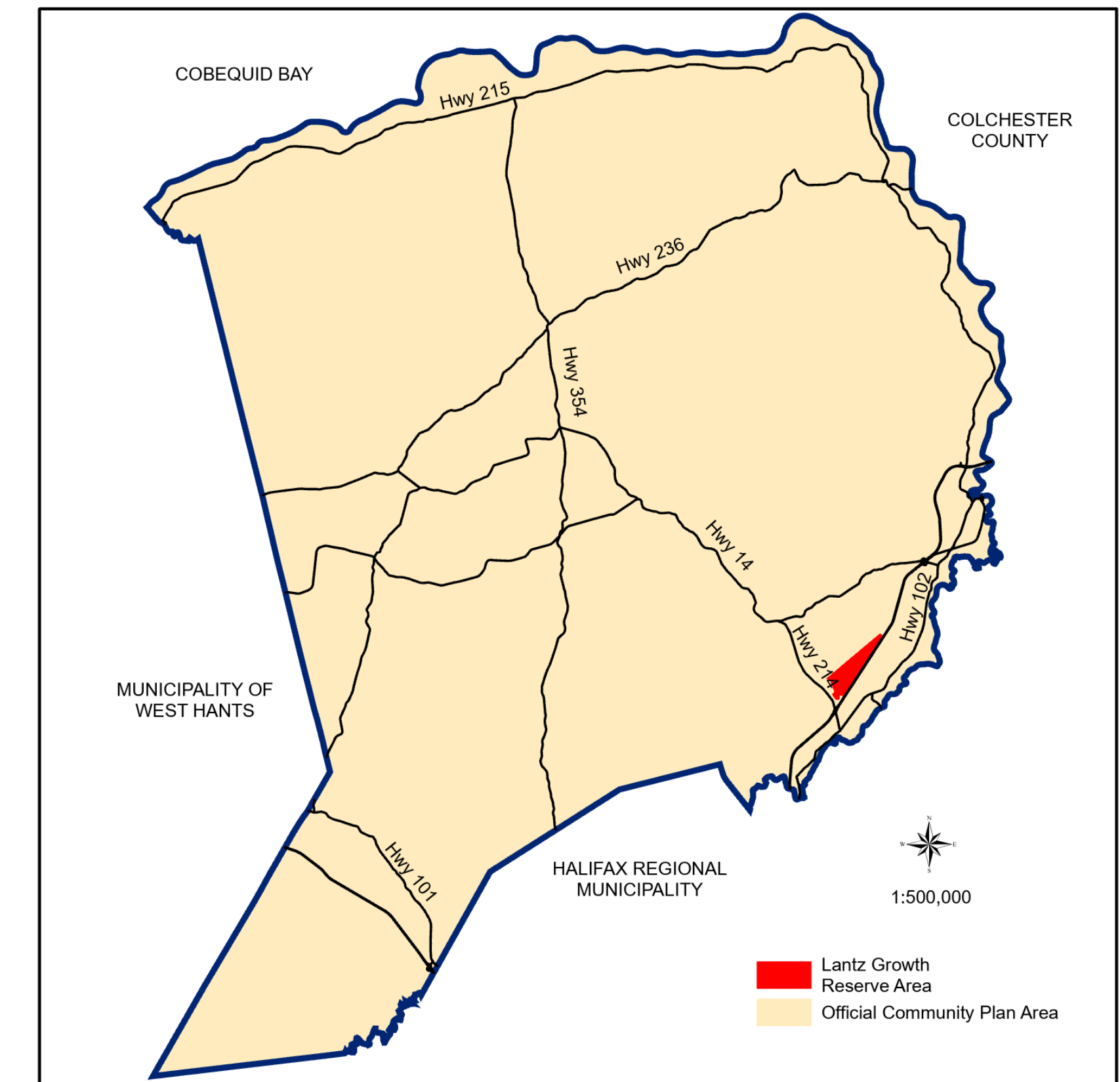


This map was produced by the Planning & Development Department and shall be used as a graphical representation of property boundaries. It is not intended to be used as a survey plan or for legal descriptions.





Approved on:
Amended on:



RESIDENTIAL

- CR - Country Residential
- LR - Lakeshore Residential
- R1 - Established Residential Neighbourhood
- R2 - Two Dwelling Unit Residential
- MH - Mini-Home

COMMERCIAL

- GC - General Commercial
- HC - Highway Commercial
- RC - Regional Commercial
- BP - Business Park
- IC - Industrial Commercial

MIXED USE

- R2-T - Townhouse
- R3 - Multiple Unit Dwelling
- MC - Mixed Use Centre
- VC - Village Core
- WCDD - Walkable Comprehensive Development District

RURAL

- AR - Agricultural Reserve
- RU - Rural Use
- RU-2 - Rural Use North
- RCDD - Rural Comprehensive Development District

COMMUNITY USE

- IU - Institutional Use
- OS - Open Space

ENVIRONMENTAL

- HF - High Risk Floodplain
- MF - Moderate Risk Floodplain Overlay
- WG - Watercourse Greenbelt
- WS - Water Supply
- WI - Water Intake Overlay
- WP - Water Protection Overlay
- SAP-1 - Shubenacadie Aquifer Protection Overlay
- SAP-2 - Shubenacadie Aquifer Protection Overlay
- SAP-3 - Shubenacadie Aquifer Protection Overlay
- MGW - Milford Groundwater Overlay
- FF - Fundy Flood Risk Overlay
- FE - 2050 Fundy Erosion Overlay
- FE - 2100 Fundy Erosion Overlay

OTHER

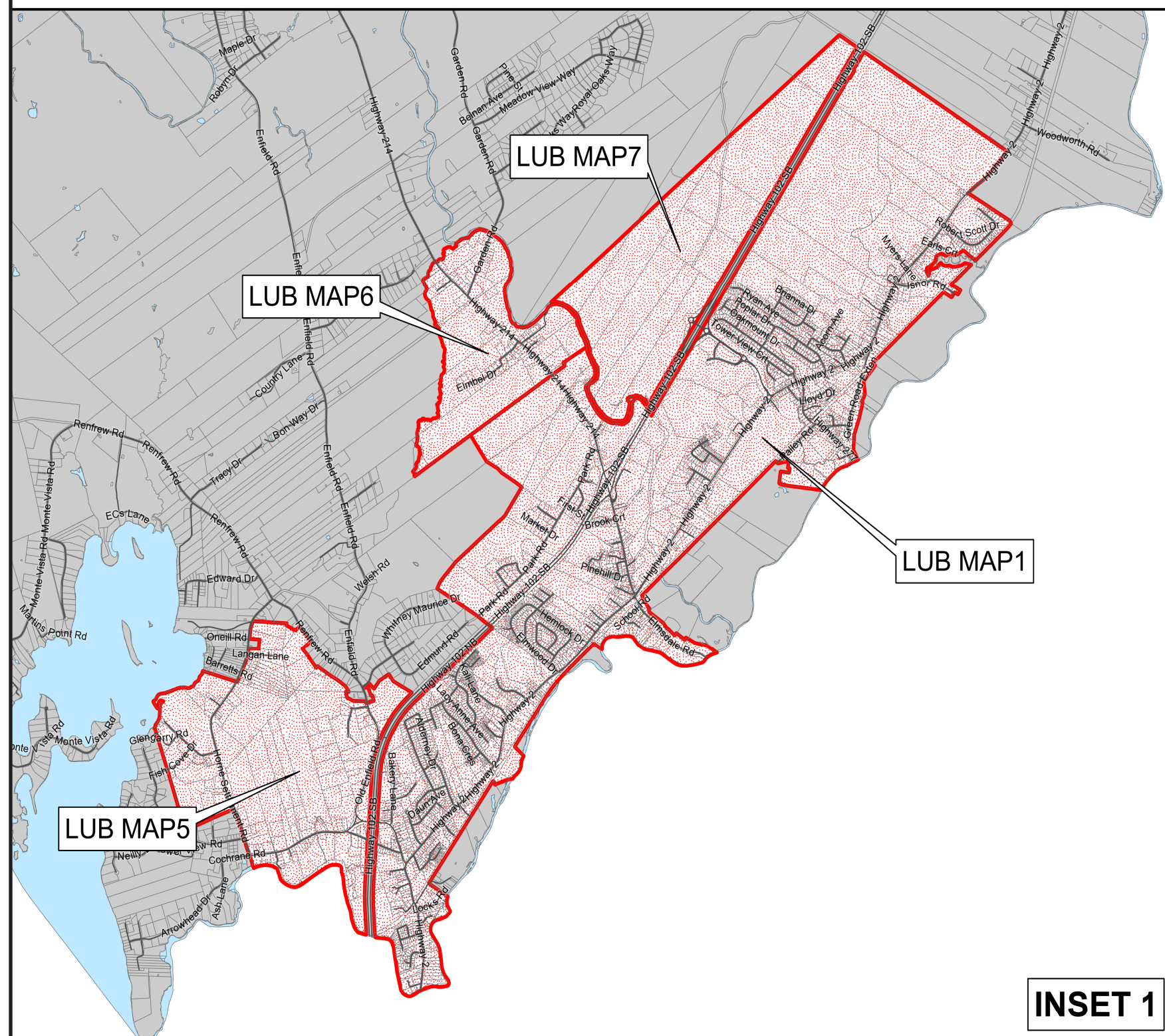
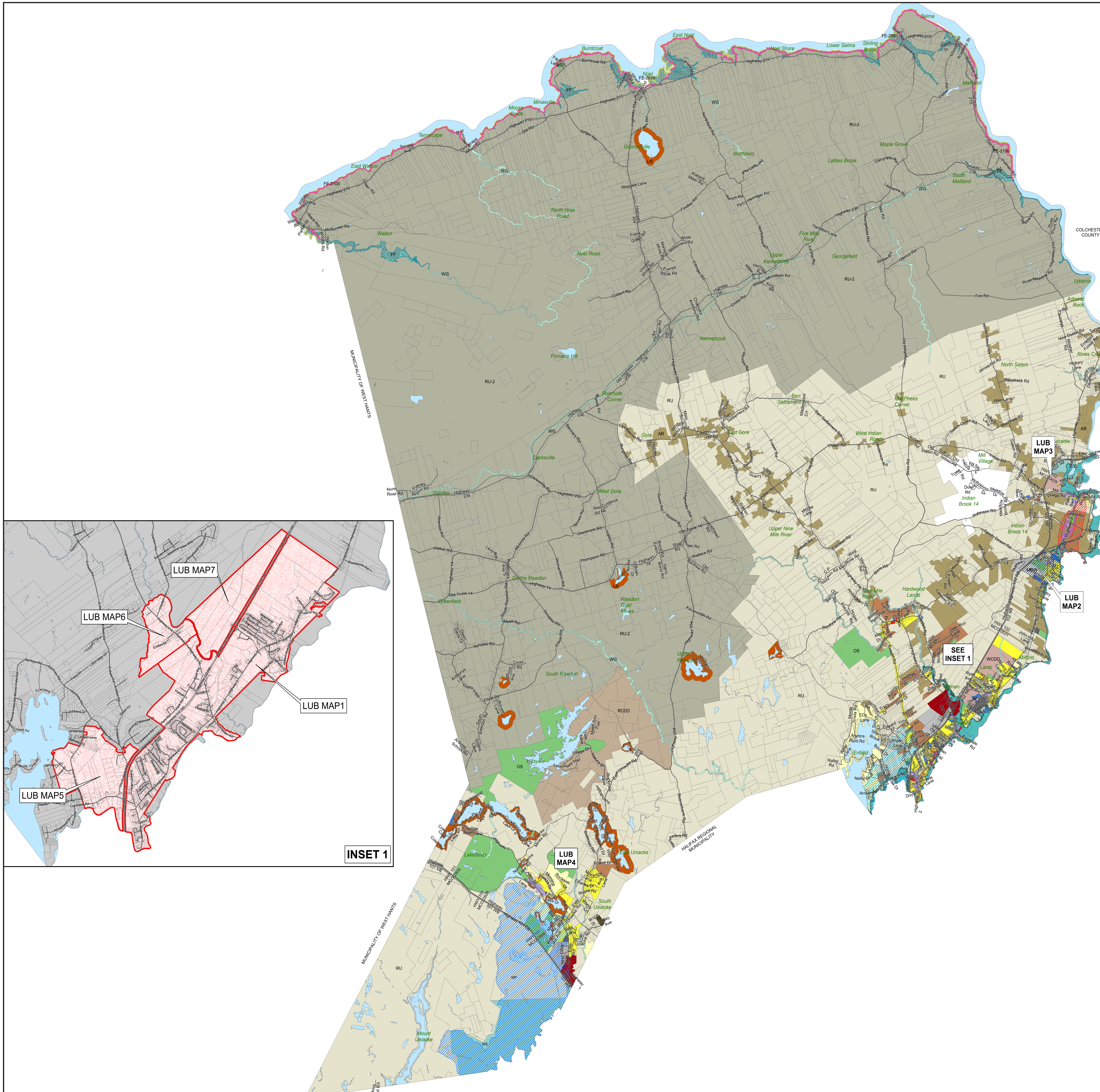
- IR-14 - Indian Brook 14
- Growth Management Areas / Growth Reserve Areas

1: 8,000



This map was produced by the Planning & Development Department and shall be used as a graphical representation of property boundaries. It is not intended to be used as a survey plan or for legal descriptions.





Approved on:
Amended on:

| RESIDENTIAL | | COMMERCIAL | |
|---------------|--|---------------|---|
| | CR - Country Residential | | GC - General Commercial |
| | LR - Lakeshore Residential | | HC - Highway Commercial |
| | R1 - Established Residential Neighbourhood | | RC - Regional Commercial |
| | R2 - Two Dwelling Unit Residential | | BP - Business Park |
| | MH - Mini-Home | | IC - Industrial Commercial |
| MIXED USE | | RURAL | |
| | R2-T - Townhouse | | AR - Agricultural Reserve |
| | R3 - Multiple Unit Dwelling | | RU - Rural Use |
| | MC - Mixed Use Centre | | RU-2 - Rural Use North |
| | VC - Village Core | | RCDD - Rural Comprehensive Development District |
| | WCDD - Walkable Comprehensive Development District | | |
| COMMUNITY USE | | ENVIRONMENTAL | |
| | IU - Institutional Use | | HF - High Risk Floodplain |
| | OS - Open Space | | MF - Moderate Risk Floodplain Overlay |
| OTHER | | | WG - Watercourse Greenbelt |
| | IR-14 - Indian Brook 14 | | WS - Water Supply |
| | Growth Management Areas / Growth Reserve Areas | | WI - Water Intake Overlay |
| | | | WP - Water Protection Overlay |
| | | | SAP-1 - Shubenacadie Aquifer Protection Overlay |
| | | | SAP-2 - Shubenacadie Aquifer Protection Overlay |
| | | | SAP-3 - Shubenacadie Aquifer Protection Overlay |
| | | | MGW - Milford Groundwater Overlay |
| | | | FF - Fundy Flood Risk Overlay |
| | | | FE - 2050 Fundy Erosion Overlay |
| | | | FE - 2100 Fundy Erosion Overlay |



1: 70,000



This map was produced by the Planning & Development Department and shall be used as a graphical representation of property boundaries. It is not intended to be used as a survey plan or for legal descriptions.