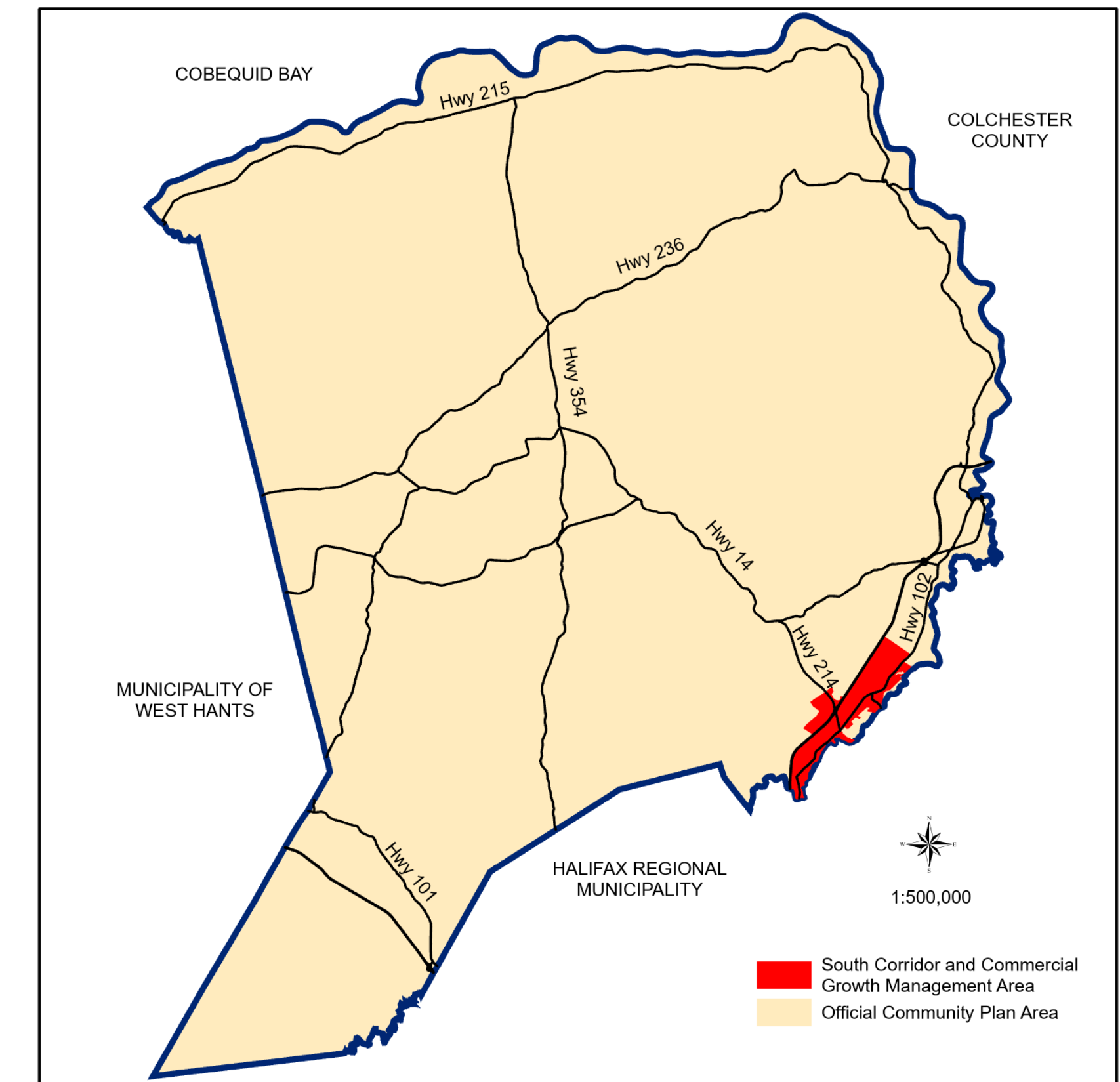


Approved on:
Amended on:



RESIDENTIAL

- CR - Country Residential
- LR - Lakeshore Residential
- R1 - Established Residential Neighbourhood
- R2 - Two Dwelling Unit Residential
- MH - Mini-Home

COMMERCIAL

- GC - General Commercial
- HC - Highway Commercial
- RC - Regional Commercial
- BP - Business Park
- IC - Industrial Commercial

MIXED USE

- R2-T - Townhouse
- R3 - Multiple Unit Dwelling
- MC - Mixed Use Centre
- VC - Village Core
- WCDD - Walkable Comprehensive Development District

RURAL

- AR - Agricultural Reserve
- RU - Rural Use
- RU-2 - Rural Use North
- RCDD - Rural Comprehensive Development District

COMMUNITY USE

- IU - Institutional Use
- OS - Open Space

ENVIRONMENTAL

- HF - High Risk Floodplain
- MF - Moderate Risk Floodplain Overlay
- WG - Watercourse Greenbelt
- WS - Water Supply
- WI - Water Intake Overlay
- WP - Water Protection Overlay
- SAP-1 - Shubenacadie Aquifer Protection Overlay
- SAP-2 - Shubenacadie Aquifer Protection Overlay
- SAP-3 - Shubenacadie Aquifer Protection Overlay
- MGW - Milford Groundwater Overlay
- FF - Fundy Flood Risk Overlay
- FE - Fundy Erosion Overlay

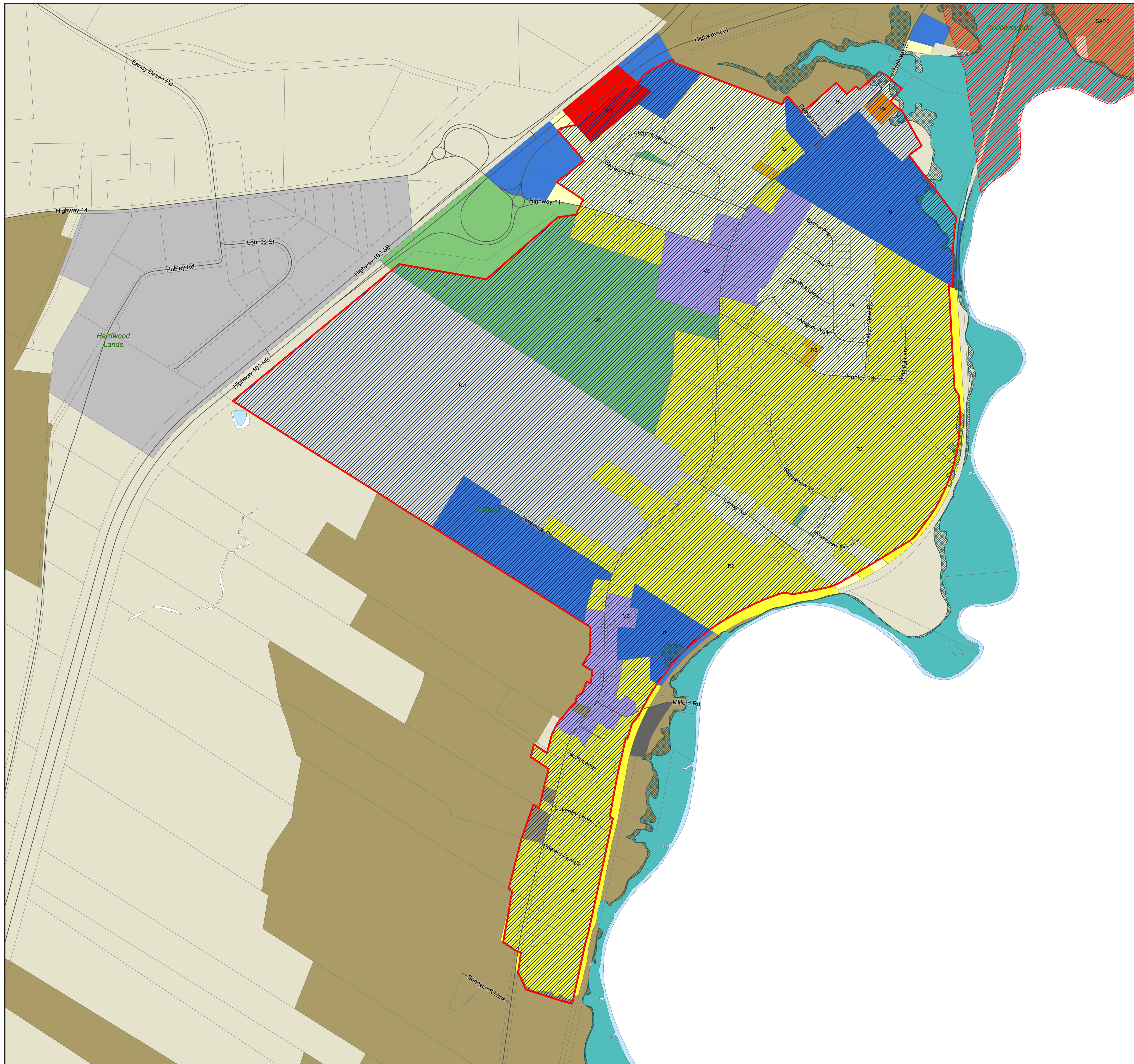
OTHER

- IR-14 - Indian Brook 14
- Growth Management Areas / Growth Reserve Areas

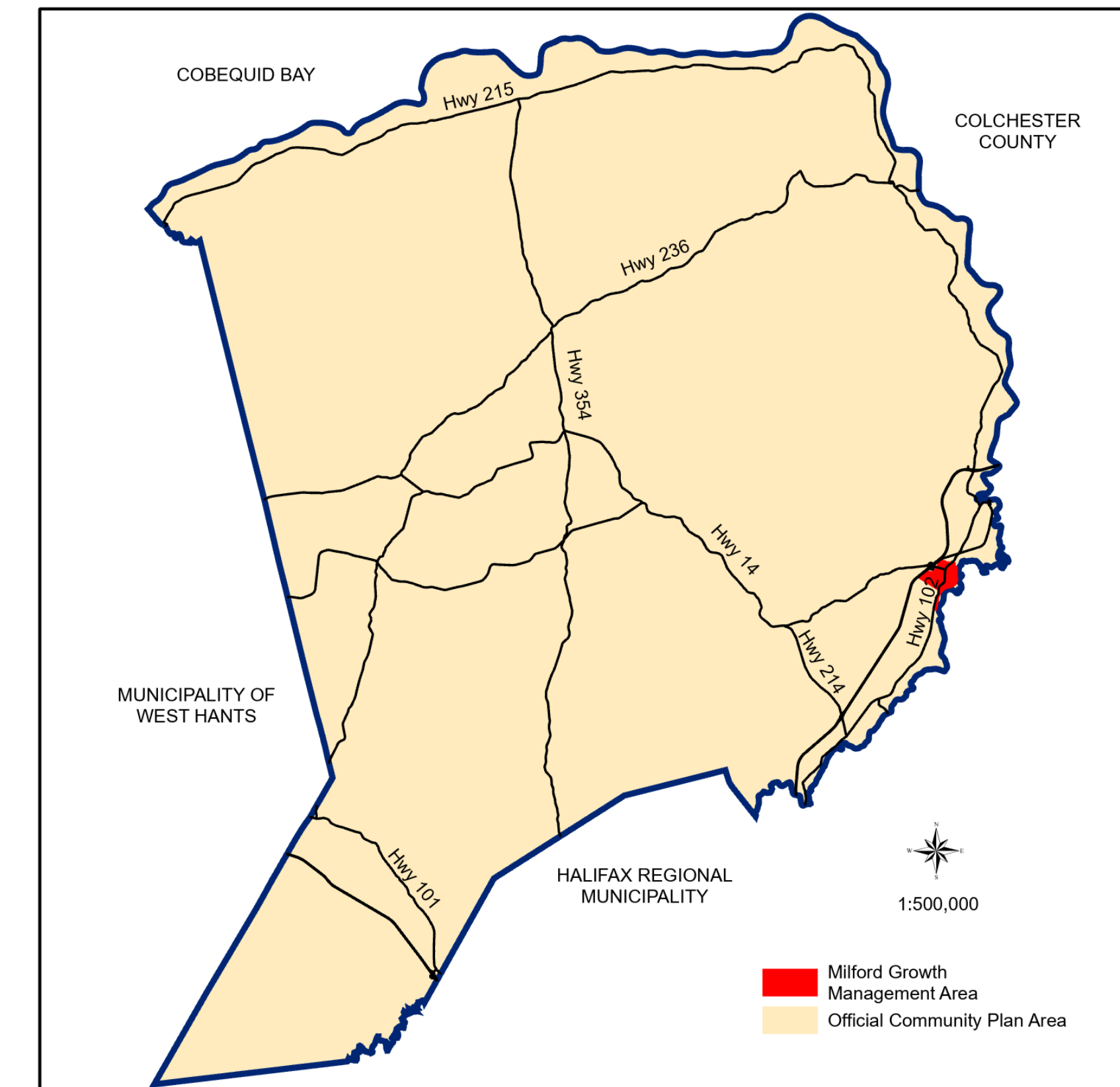
1:16,000

0 375 750 1,500 2,250 3,000 Metres

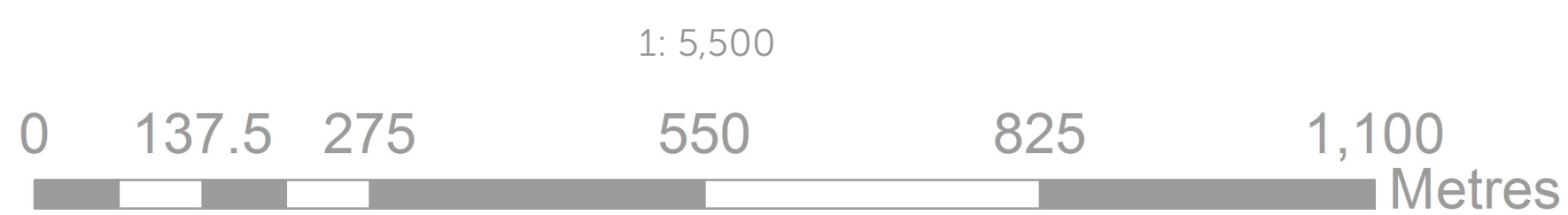




Approved on:
Amended on:



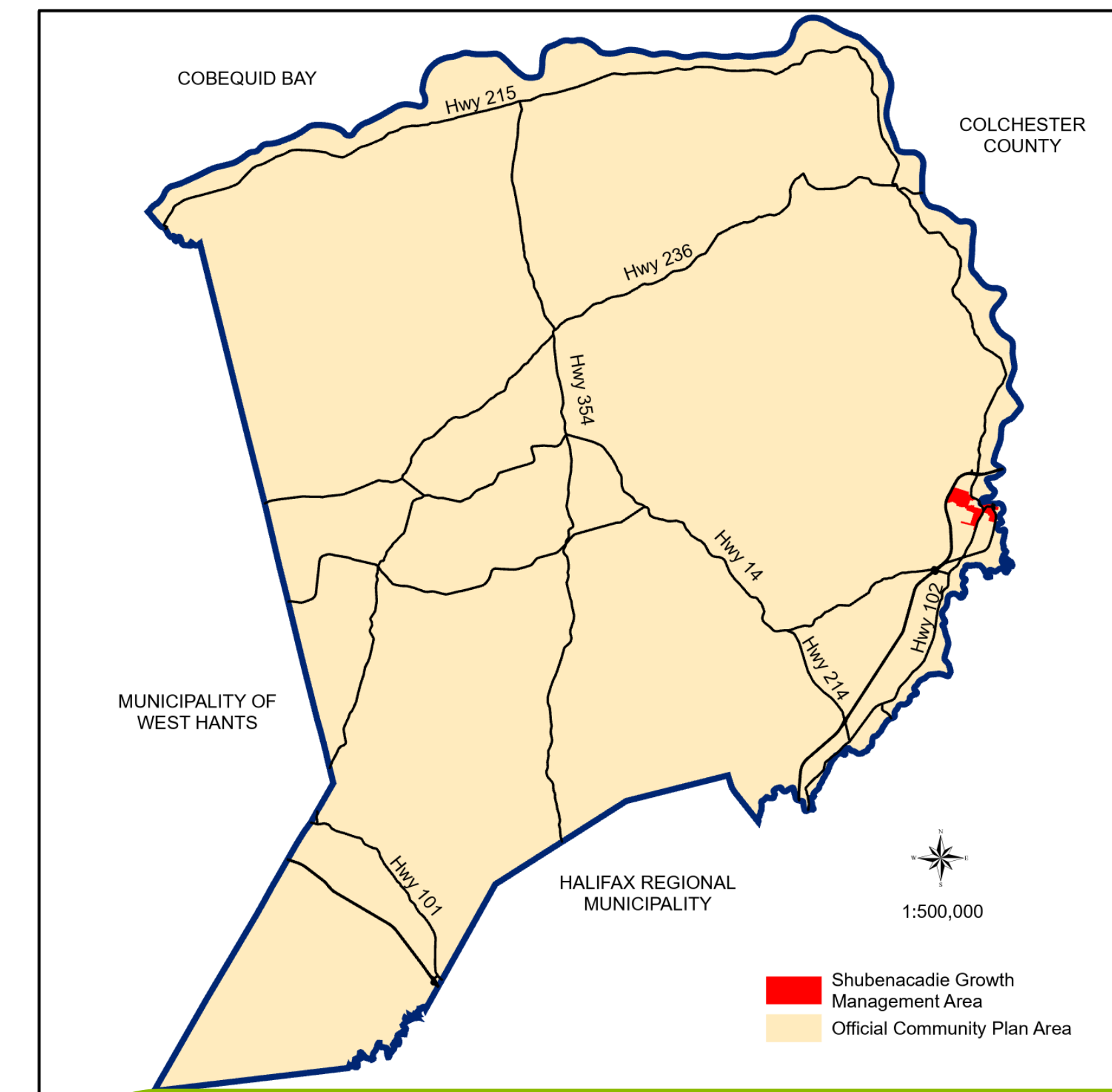
RESIDENTIAL		COMMERCIAL	
	CR - Country Residential		GC - General Commercial
	LR - Lakeshore Residential		HC - Highway Commercial
	R1 - Established Residential Neighbourhood		RC - Regional Commercial
	R2 - Two Dwelling Unit Residential		BP - Business Park
	MH - Mini-Home		IC - Industrial Commercial
MIXED USE		RURAL	
	R2-T - Townhouse		AR - Agricultural Reserve
	R3 - Multiple Unit Dwelling		RU - Rural Use
	MC - Mixed Use Centre		RU-2 - Rural Use North
	VC - Village Core		RCDD - Rural Comprehensive Development District
	WCDD - Walkable Comprehensive Development District		
COMMUNITY USE		ENVIRONMENTAL	
	IU - Institutional Use		HF - High Risk Floodplain
	OS - Open Space		MF - Moderate Risk Floodplain Overlay
OTHER			WG - Watercourse Greenbelt
	IR-14 - Indian Brook 14		WS - Water Supply
	Growth Management Areas / Growth Reserve Areas		WI - Water Intake Overlay
			WP - Water Protection Overlay
			SAP-1 - Shubenacadie Aquifer Protection Overlay
			SAP-2 - Shubenacadie Aquifer Protection Overlay
			SAP-3 - Shubenacadie Aquifer Protection Overlay
			MGW - Milford Groundwater Overlay
			FF - Fundy Flood Risk Overlay
			FE - Fundy Erosion Overlay



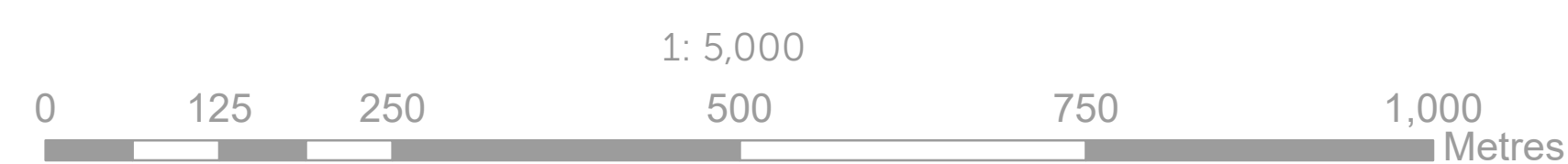
This map was produced by the Planning & Development Department and shall be used as a graphical representation of property boundaries. It is not intended to be used as a survey plan or for legal descriptions.



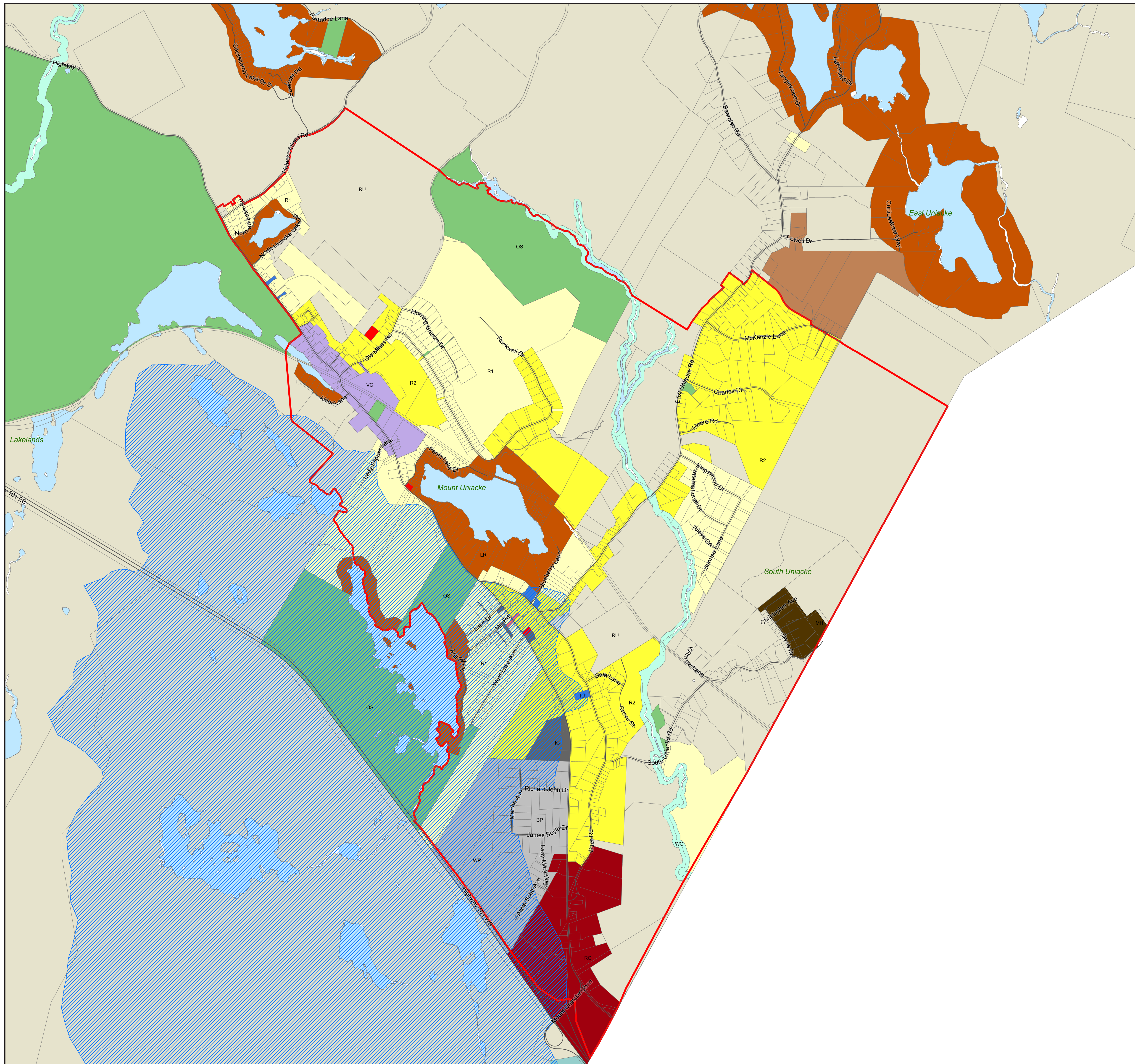
Approved on:
Amended on:



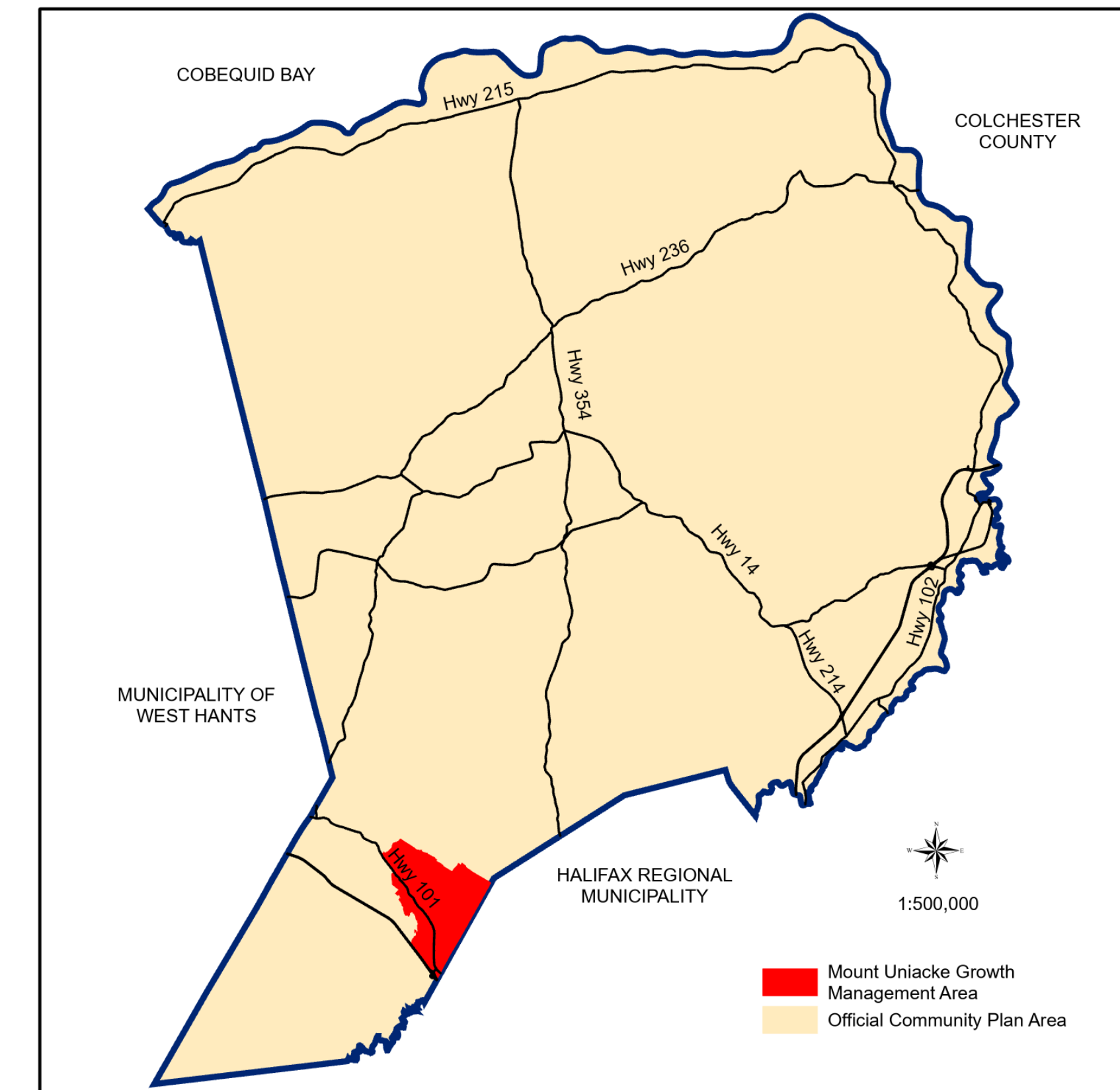
RESIDENTIAL		COMMERCIAL	
	CR - Country Residential		GC - General Commercial
	LR - Lakeshore Residential		HC - Highway Commercial
	R1 - Established Residential Neighbourhood		RC - Regional Commercial
	R2 - Two Dwelling Unit Residential		BP - Business Park
	MH - Mini-Home		IC - Industrial Commercial
MIXED USE		RURAL	
	R2-T - Townhouse		AR - Agricultural Reserve
	R3 - Multiple Unit Dwelling		RU - Rural Use
	MC - Mixed Use Centre		RU-2 - Rural Use North
	VC - Village Core		RCDD - Rural Comprehensive Development District
	WCDD - Walkable Comprehensive Development District		
COMMUNITY USE		ENVIRONMENTAL	
	IU - Institutional Use		HF - High Risk Floodplain
	OS - Open Space		MF - Moderate Risk Floodplain Overlay
			WG - Watercourse Greenbelt
OTHER			WS - Water Supply
	IR-14 - Indian Brook 14		WI - Water Intake Overlay
	Growth Management Areas / Growth Reserve Areas		WP - Water Protection Overlay
			SAP-1 - Shubenacadie Aquifer Protection Overlay
			SAP-2 - Shubenacadie Aquifer Protection Overlay
			SAP-3 - Shubenacadie Aquifer Protection Overlay
			MGW - Milford Groundwater Overlay
			FF - Fundy Flood Risk Overlay
			FE - Fundy Erosion Overlay



This map was produced by the Planning & Development Department and shall be used as a graphical representation of property boundaries. It is not intended to be used as a survey plan or for legal descriptions.



Approved on:
Amended on:

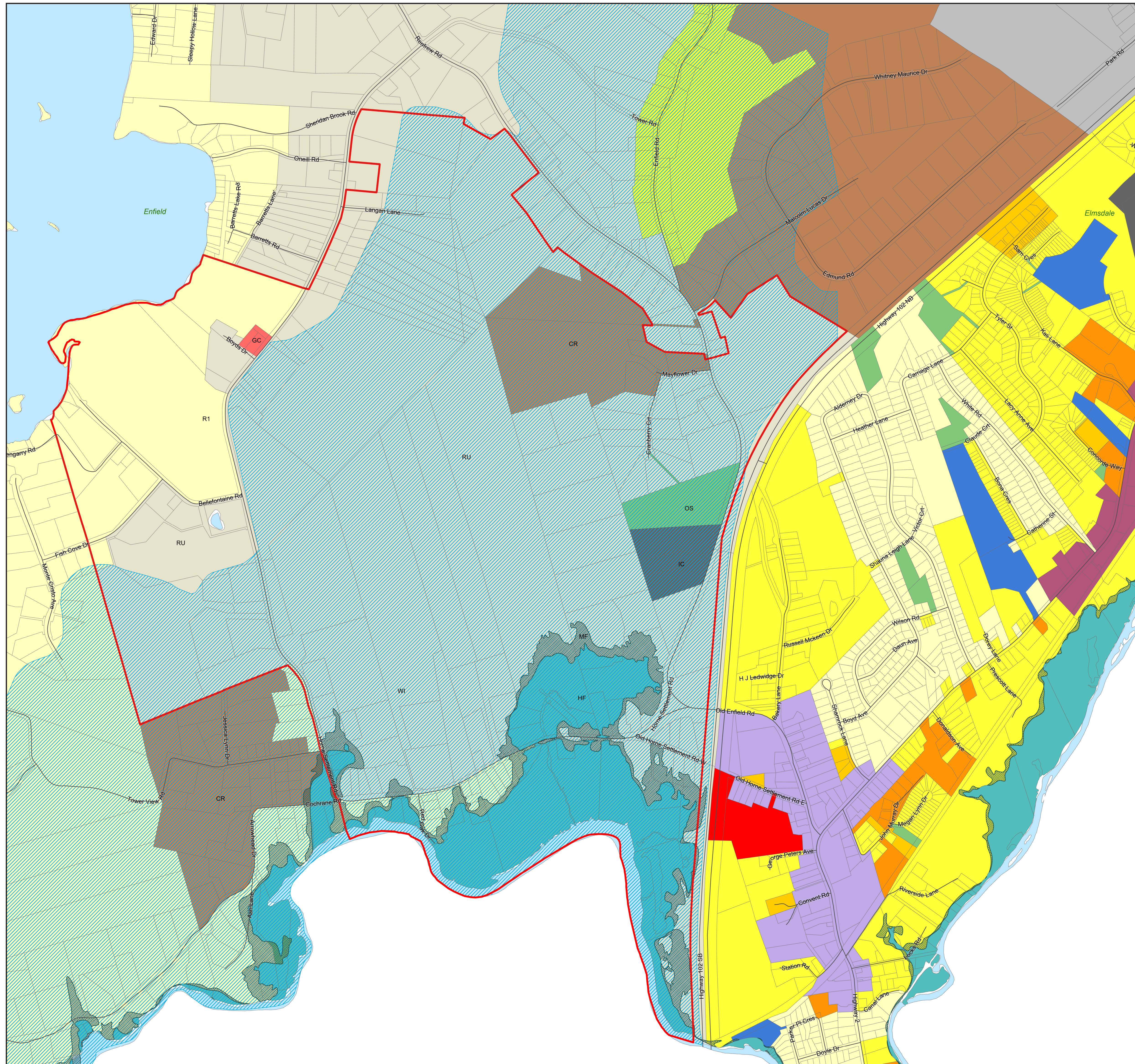


RESIDENTIAL		COMMERCIAL	
	CR - Country Residential		GC - General Commercial
	LR - Lakeshore Residential		HC - Highway Commercial
	R1 - Established Residential Neighbourhood		RC - Regional Commercial
	R2 - Two Dwelling Unit Residential		BP - Business Park
	MH - Mini-Home		IC - Industrial Commercial
MIXED USE		RURAL	
	R2-T - Townhouse		AR - Agricultural Reserve
	R3 - Multiple Unit Dwelling		RU - Rural Use
	MC - Mixed Use Centre		RU-2 - Rural Use North
	VC - Village Core		RCDD - Rural Comprehensive Development District
	WCDD - Walkable Comprehensive Development District		
COMMUNITY USE		ENVIRONMENTAL	
	IU - Institutional Use		HF - High Risk Floodplain
	OS - Open Space		MF - Moderate Risk Floodplain Overlay
OTHER			WG - Watercourse Greenbelt
	IR-14 - Indian Brook 14		WS - Water Supply
	Growth Management Areas / Growth Reserve Areas		WI - Water Intake Overlay
			WP - Water Protection Overlay
			SAP-1 - Shubenacadie Aquifer Protection Overlay
			SAP-2 - Shubenacadie Aquifer Protection Overlay
			SAP-3 - Shubenacadie Aquifer Protection Overlay
			MGW - Milford Groundwater Overlay
			FF - Fundy Flood Risk Overlay
			FE - Fundy Erosion Overlay

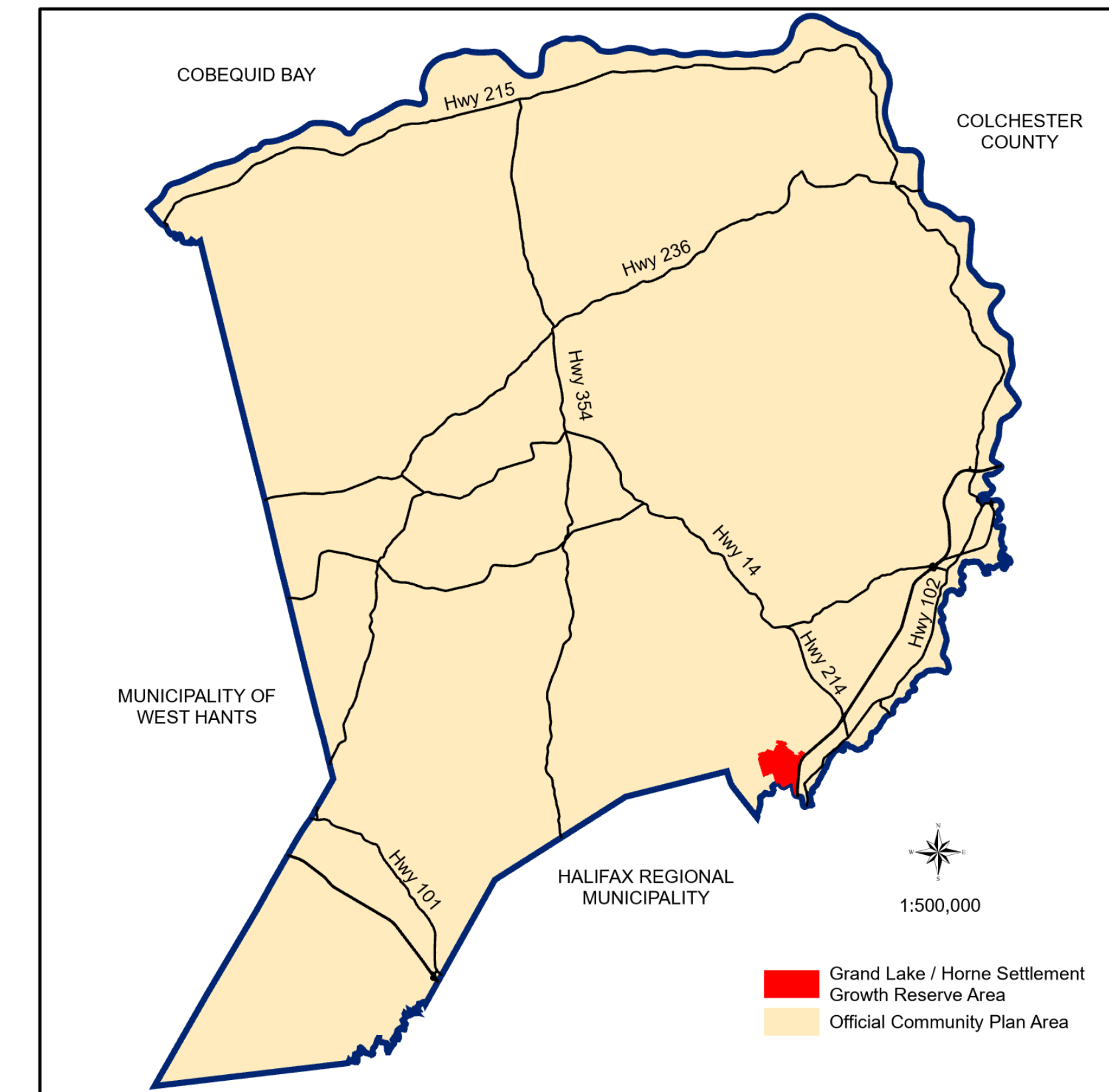
1: 15,000



This map was produced by the Planning & Development Department and shall be used as a graphical representation of property boundaries. It is not intended to be used as a survey plan or for legal descriptions.



Approved on:
Amended on:

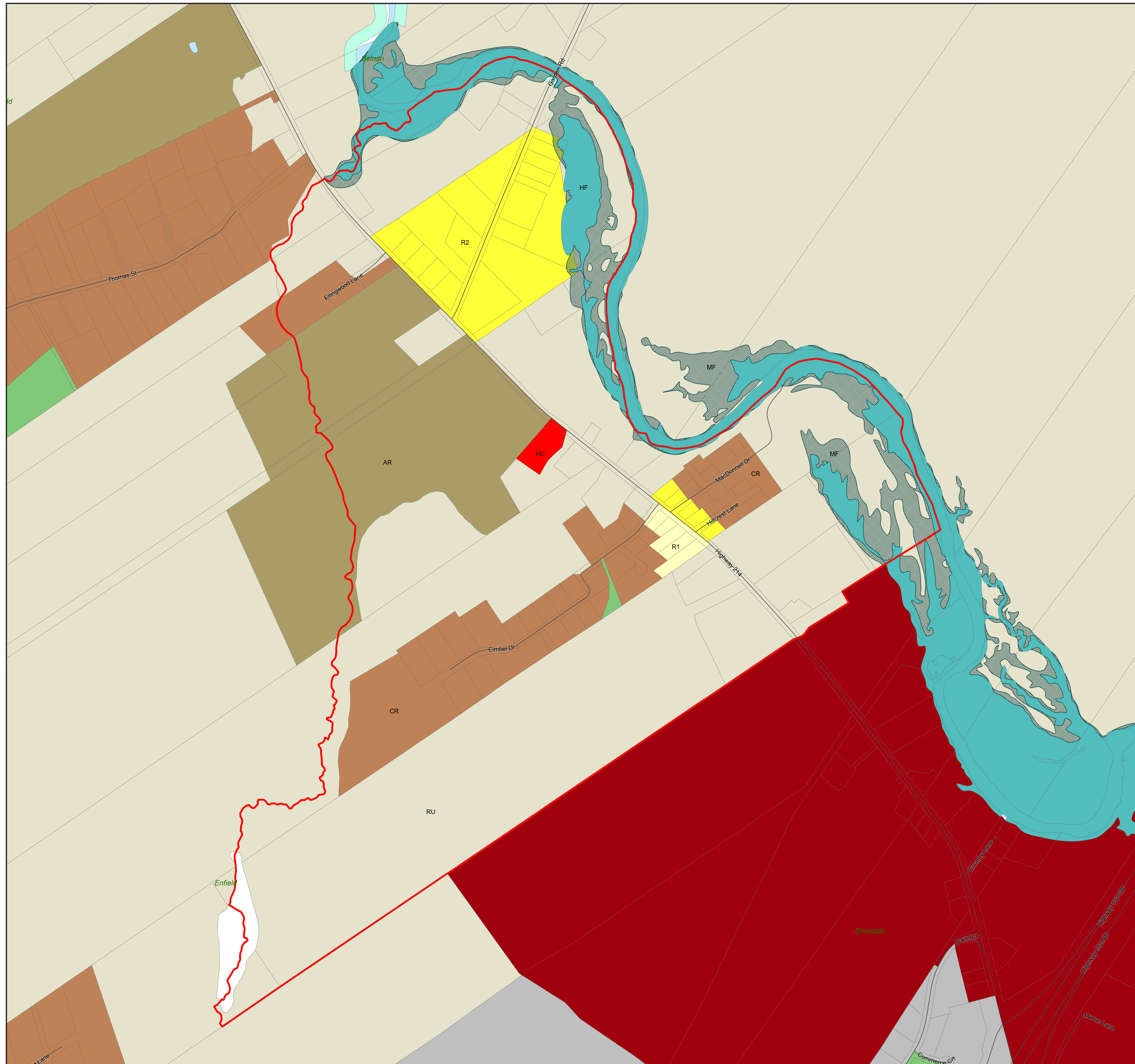


RESIDENTIAL		COMMERCIAL	
CR - Country Residential	GC - General Commercial	HC - Highway Commercial	RC - Regional Commercial
LR - Lakeshore Residential		BP - Business Park	IC - Industrial Commercial
R1 - Established Residential Neighbourhood			
R2 - Two Dwelling Unit Residential			
MH - Mini-Home			
MIXED USE		RURAL	
R2-T - Townhouse	AR - Agricultural Reserve	RU - Rural Use	RU-2 - Rural Use North
R3 - Multiple Unit Dwelling		RCDD - Rural Comprehensive Development District	
MC - Mixed Use Centre			
VC - Village Core			
WCDD - Walkable Comprehensive Development District			
COMMUNITY USE		ENVIRONMENTAL	
IU - Institutional Use	HF - High Risk Floodplain	MF - Moderate Risk Floodplain Overlay	WG - Watercourse Greenbelt
OS - Open Space			WS - Water Supply
OTHER			WI - Water Intake Overlay
IR-14 - Indian Brook 14			WP - Water Protection Overlay
Growth Management Areas / Growth Reserve Areas			SAP-1 - Shubenacadie Aquifer Protection Overlay
			SAP-2 - Shubenacadie Aquifer Protection Overlay
			SAP-3 - Shubenacadie Aquifer Protection Overlay
			MGW - Milford Groundwater Overlay
			FF - Fundy Flood Risk Overlay
			FE - Fundy Erosion Overlay

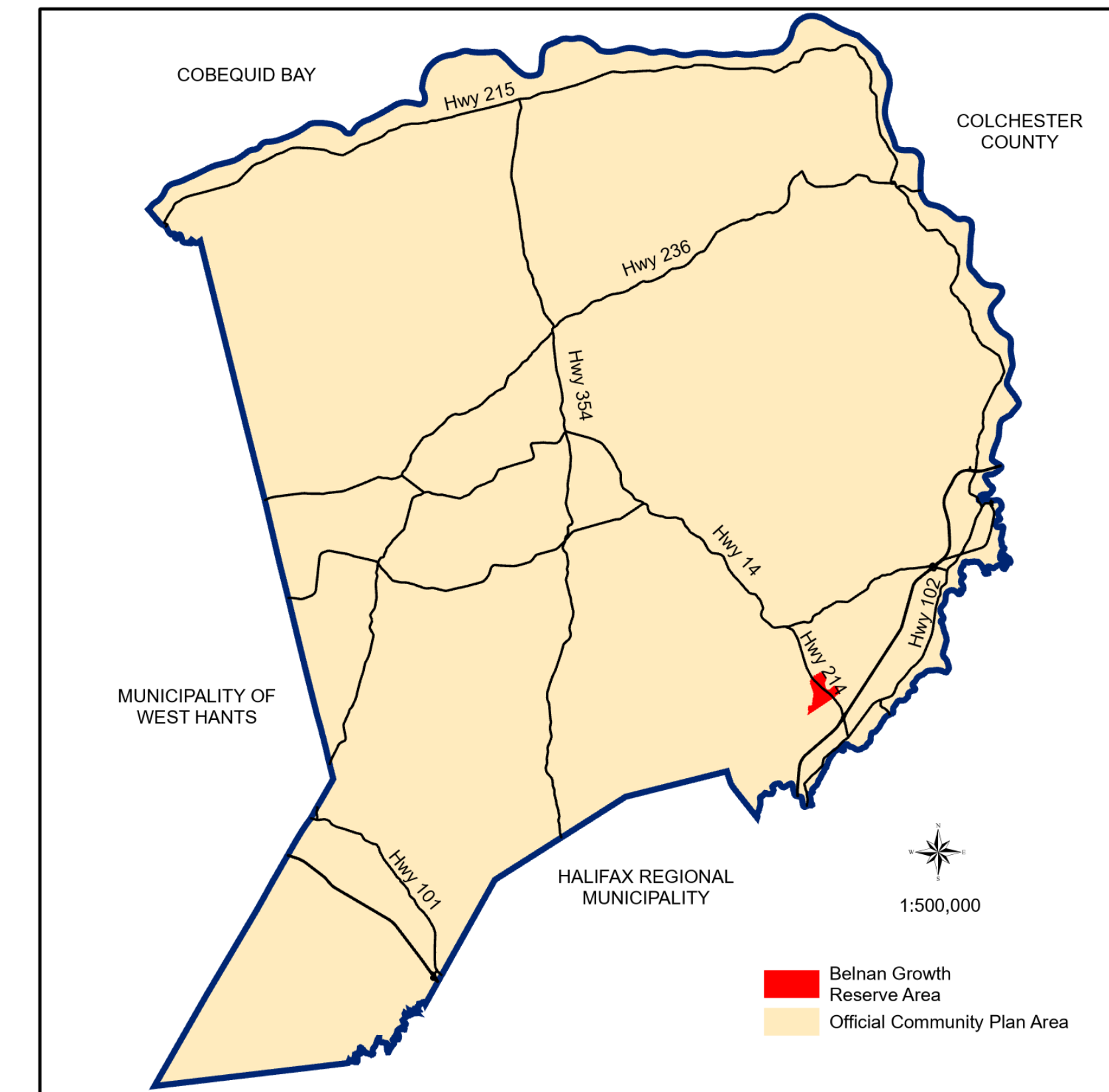
1: 6,000



This map was produced by the Planning & Development Department and shall be used as a graphical representation of property boundaries. It is not intended to be used as a survey plan or for legal descriptions.



Approved on:
Amended on:



RESIDENTIAL		COMMERCIAL	
	CR - Country Residential		GC - General Commercial
	LR - Lakeshore Residential		HC - Highway Commercial
	R1 - Established Residential Neighbourhood		RC - Regional Commercial
	R2 - Two Dwelling Unit Residential		BP - Business Park
	MH - Mini-Home		IC - Industrial Commercial
MIXED USE		RURAL	
	R2-T - Townhouse		AR - Agricultural Reserve
	R3 - Multiple Unit Dwelling		RU - Rural Use
	MC - Mixed Use Centre		RU-2 - Rural Use North
	VC - Village Core		RCDD - Rural Comprehensive Development District
	WCDD - Walkable Comprehensive Development District		
COMMUNITY USE		ENVIRONMENTAL	
	IU - Institutional Use		HF - High Risk Floodplain
	OS - Open Space		MF - Moderate Risk Floodplain Overlay
OTHER			WG - Watercourse Greenbelt
	IR-14 - Indian Brook 14		WS - Water Supply
	Growth Management Areas / Growth Reserve Areas		WI - Water Intake Overlay
			WP - Water Protection Overlay
			SAP-1 - Shubenacadie Aquifer Protection Overlay
			SAP-2 - Shubenacadie Aquifer Protection Overlay
			SAP-3 - Shubenacadie Aquifer Protection Overlay
			MGW - Milford Groundwater Overlay
			FF - Fundy Flood Risk Overlay
			FE - Fundy Erosion Overlay

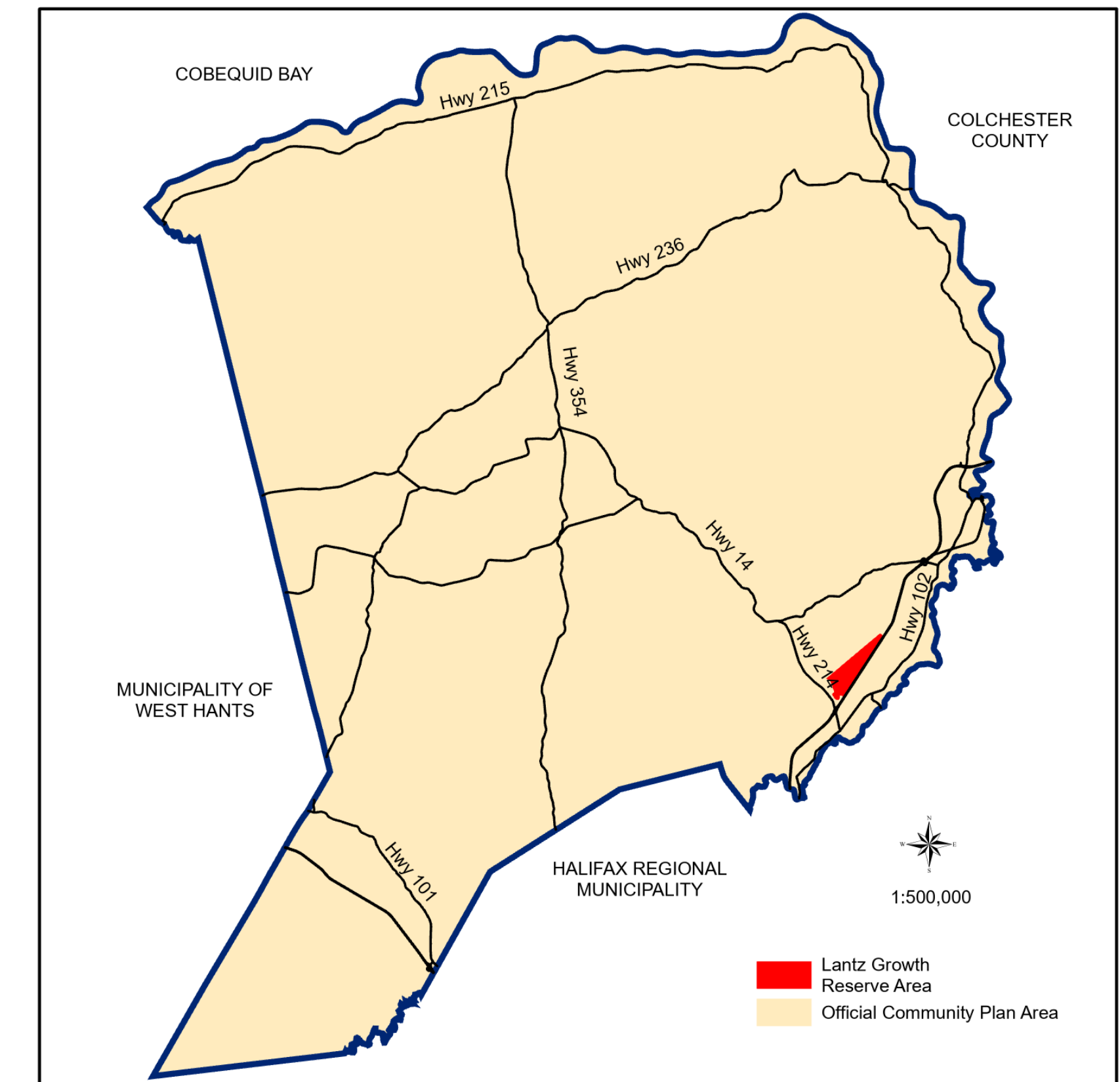
1: 4,500



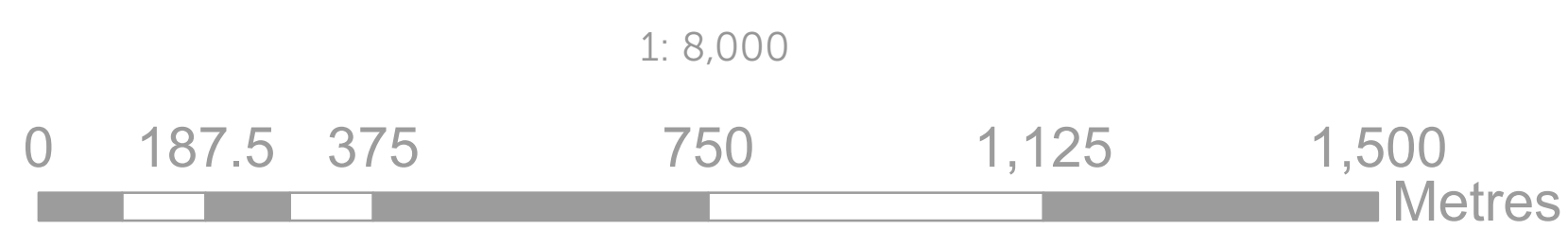
This map was produced by the Planning & Development Department and shall be used as a graphical representation of property boundaries. It is not intended to be used as a survey plan or for legal descriptions.



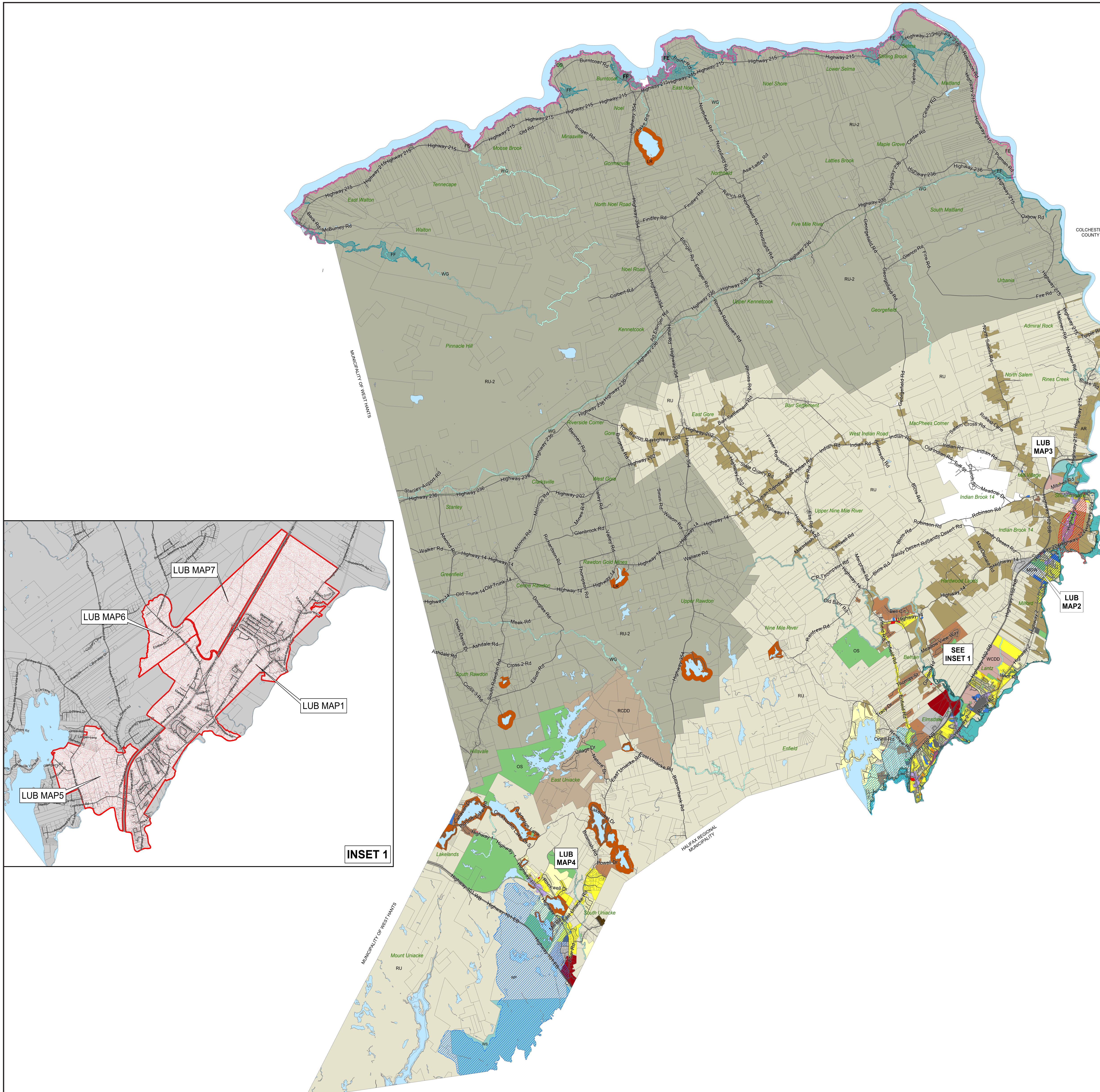
Approved on:
Amended on:



RESIDENTIAL		COMMERCIAL	
	CR - Country Residential		GC - General Commercial
	LR - Lakeshore Residential		HC - Highway Commercial
	R1 - Established Residential Neighbourhood		RC - Regional Commercial
	R2 - Two Dwelling Unit Residential		BP - Business Park
	MH - Mini-Home		IC - Industrial Commercial
MIXED USE		RURAL	
	R2-T - Townhouse		AR - Agricultural Reserve
	R3 - Multiple Unit Dwelling		RU - Rural Use
	MC - Mixed Use Centre		RU-2 - Rural Use North
	VC - Village Core		RCDD - Rural Comprehensive Development District
	WCDD - Walkable Comprehensive Development District		
COMMUNITY USE		ENVIRONMENTAL	
	IU - Institutional Use		HF - High Risk Floodplain
	OS - Open Space		MF - Moderate Risk Floodplain Overlay
OTHER			WG - Watercourse Greenbelt
	IR-14 - Indian Brook 14		WS - Water Supply
	Growth Management Areas / Growth Reserve Areas		WI - Water Intake Overlay
			WP - Water Protection Overlay
			SAP-1 - Shubenacadie Aquifer Protection Overlay
			SAP-2 - Shubenacadie Aquifer Protection Overlay
			SAP-3 - Shubenacadie Aquifer Protection Overlay
			MGW - Milford Groundwater Overlay
			FF - Fundy Flood Risk Overlay
			FE - Fundy Erosion Overlay



This map was produced by the Planning & Development Department and shall be used as a graphical representation of property boundaries. It is not intended to be used as a survey plan or for legal descriptions.

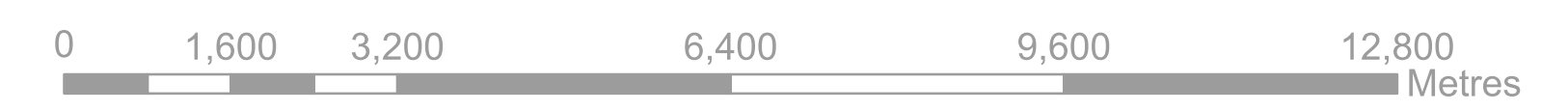


Approved on:
Amended on:

RESIDENTIAL		COMMERCIAL	
	CR - Country Residential		GC - General Commercial
	LR - Lakeshore Residential		HC - Highway Commercial
	R1 - Established Residential Neighbourhood		RC - Regional Commercial
	R2 - Two Dwelling Unit Residential		BP - Business Park
	MH - Mini-Home		IC - Industrial Commercial
MIXED USE		RURAL	
	R2-T - Townhouse		AR - Agricultural Reserve
	R3 - Multiple Unit Dwelling		RU - Rural Use
	MC - Mixed Use Centre		RU-2 - Rural Use North
	VC - Village Core		RCDD - Rural Comprehensive Development District
	WCDD - Walkable Comprehensive Development District		
COMMUNITY USE		ENVIRONMENTAL	
	IU - Institutional Use		HF - High Risk Floodplain
	OS - Open Space		MF - Moderate Risk Floodplain Overlay
OTHER			WG - Watercourse Greenbelt
	IR-14 - Indian Brook 14		WS - Water Supply
	Growth Management Areas / Growth Reserve Areas		WI - Water Intake Overlay
			WP - Water Protection Overlay
			SAP-1 - Shubenacadie Aquifer Protection Overlay
			SAP-2 - Shubenacadie Aquifer Protection Overlay
			SAP-3 - Shubenacadie Aquifer Protection Overlay
			MGW - Milford Groundwater Overlay
			FF - Fundy Flood Risk Overlay
			FE - Fundy Erosion Overlay



1: 70,000



This map was produced by the Planning & Development Department and shall be used as a graphical representation of property boundaries. It is not intended to be used as a survey plan or for legal descriptions.