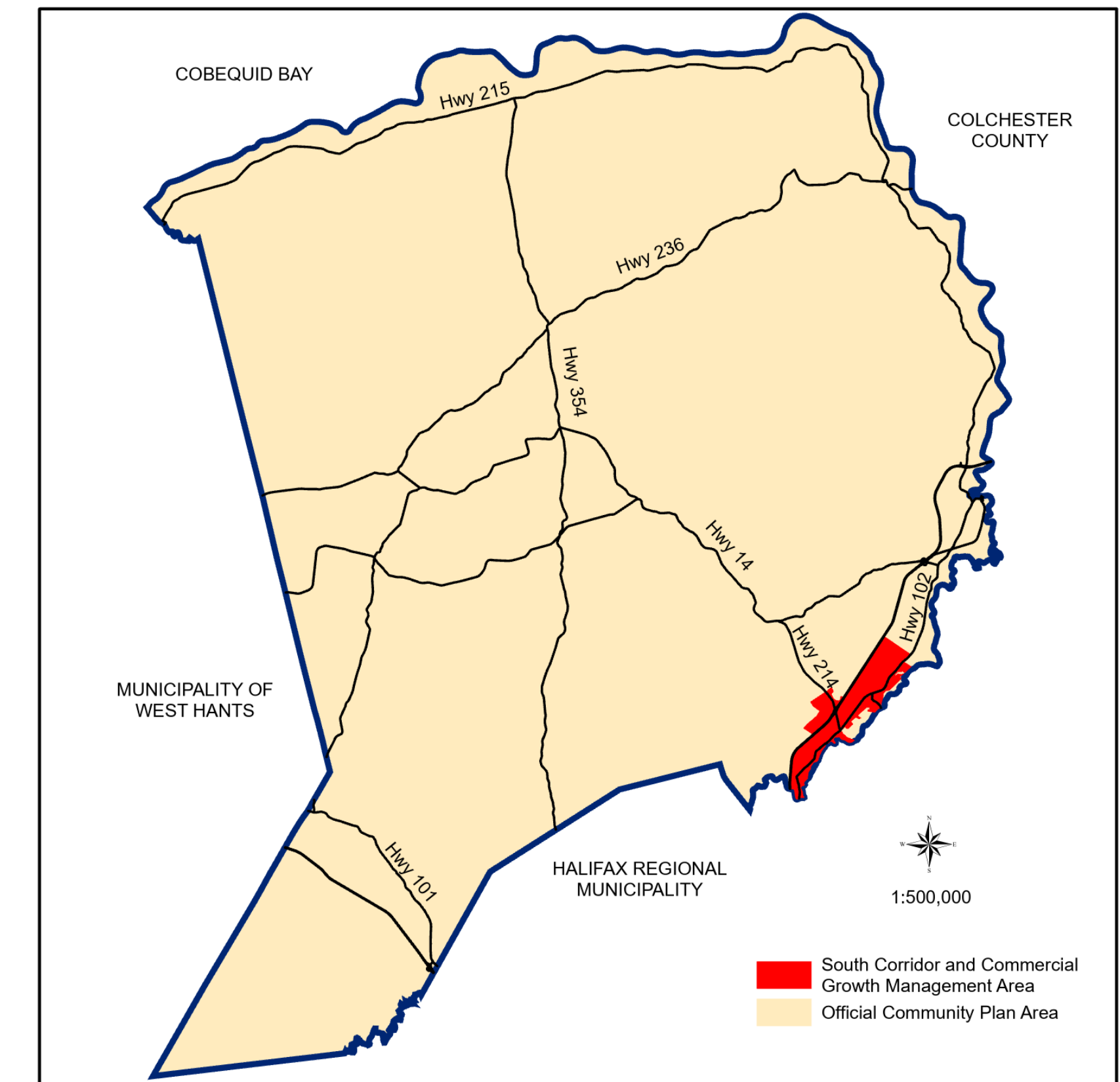


Approved on:
Amended on:



RESIDENTIAL

- CR - Country Residential
- LR- Lakeshore Residential
- ER - Established Residential Neighbourhood
- MR - Medium Density Residential Neighbourhood
- MH - Mini-Home

COMMERCIAL

- GC - General Commercial
- HC - Highway Commercial
- RC - Regional Commercial
- BP - Business Park
- IC - Industrial Commercial

MIXED USE

- MC - Mixed Use Centre
- VC - Village Core
- WCCD - Walkable Comprehensive Development District

RURAL

- AR - Agricultural Reserve
- RU - Rural Use
- RU-2 - Rural Use North
- RCDD - Rural Comprehensive Development District

COMMUNITY USE

- CU - Community Use

ENVIRONMENTAL

- HF - High Risk Floodplain
- MF - Moderate Risk Floodplain Overlay
- WS - Water Supply
- WG - Watercourse Greenbelt
- WI - Water Intake Overlay
- WP - Water Protection Overlay
- SAP-1 - Shubenacadie Aquifer Protection Overlay
- SAP-2 - Shubenacadie Aquifer Protection Overlay
- SAP-3 - Shubenacadie Aquifer Protection Overlay
- MGW - Milford Groundwater Overlay
- FF - Fundy Flood Risk Overlay
- FE - Fundy Erosion Overlay

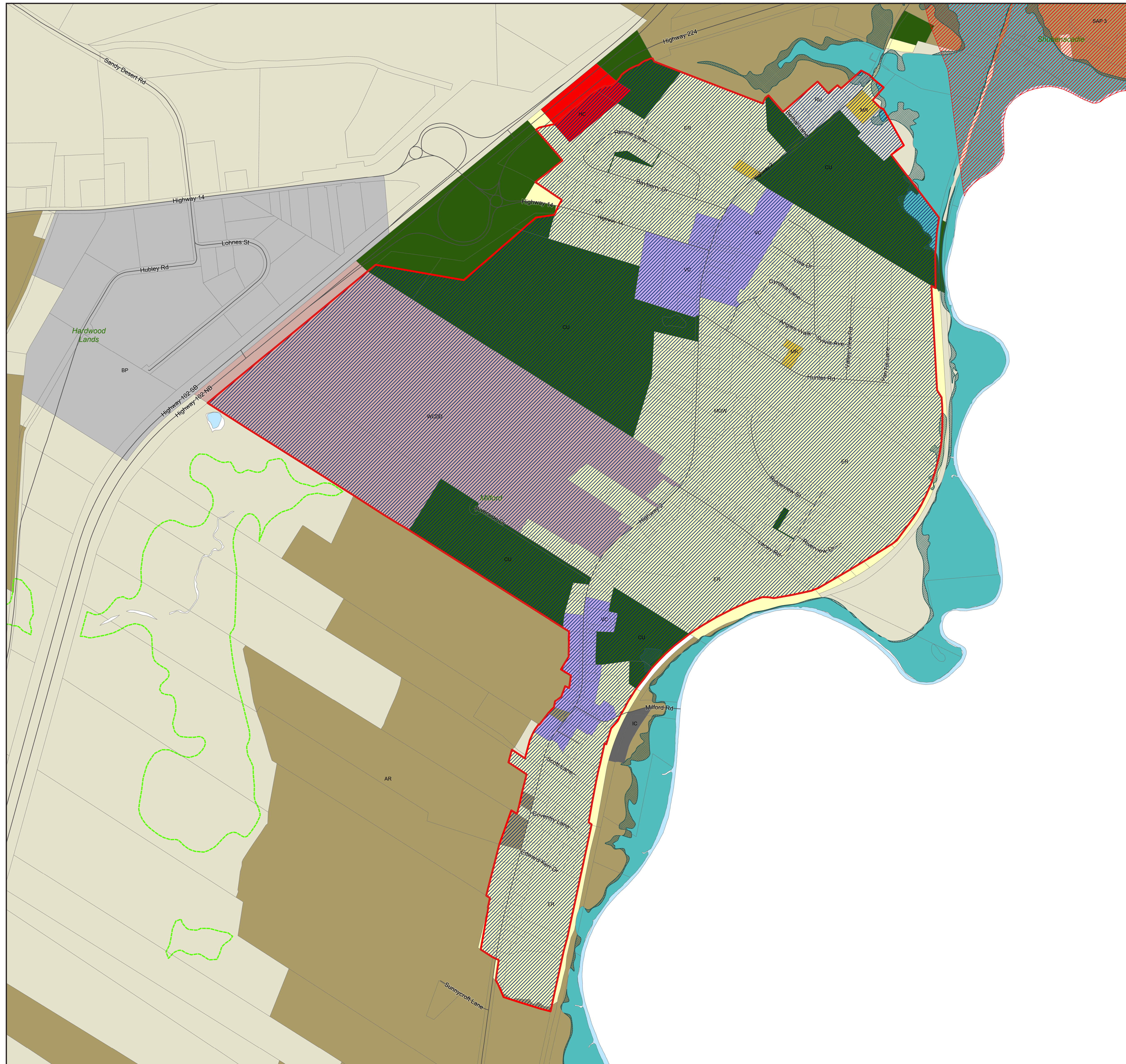
OTHER

- IR-14 - Indian Brook 14
- Growth Management Areas / Growth Reserve Areas
- Potential Wetland

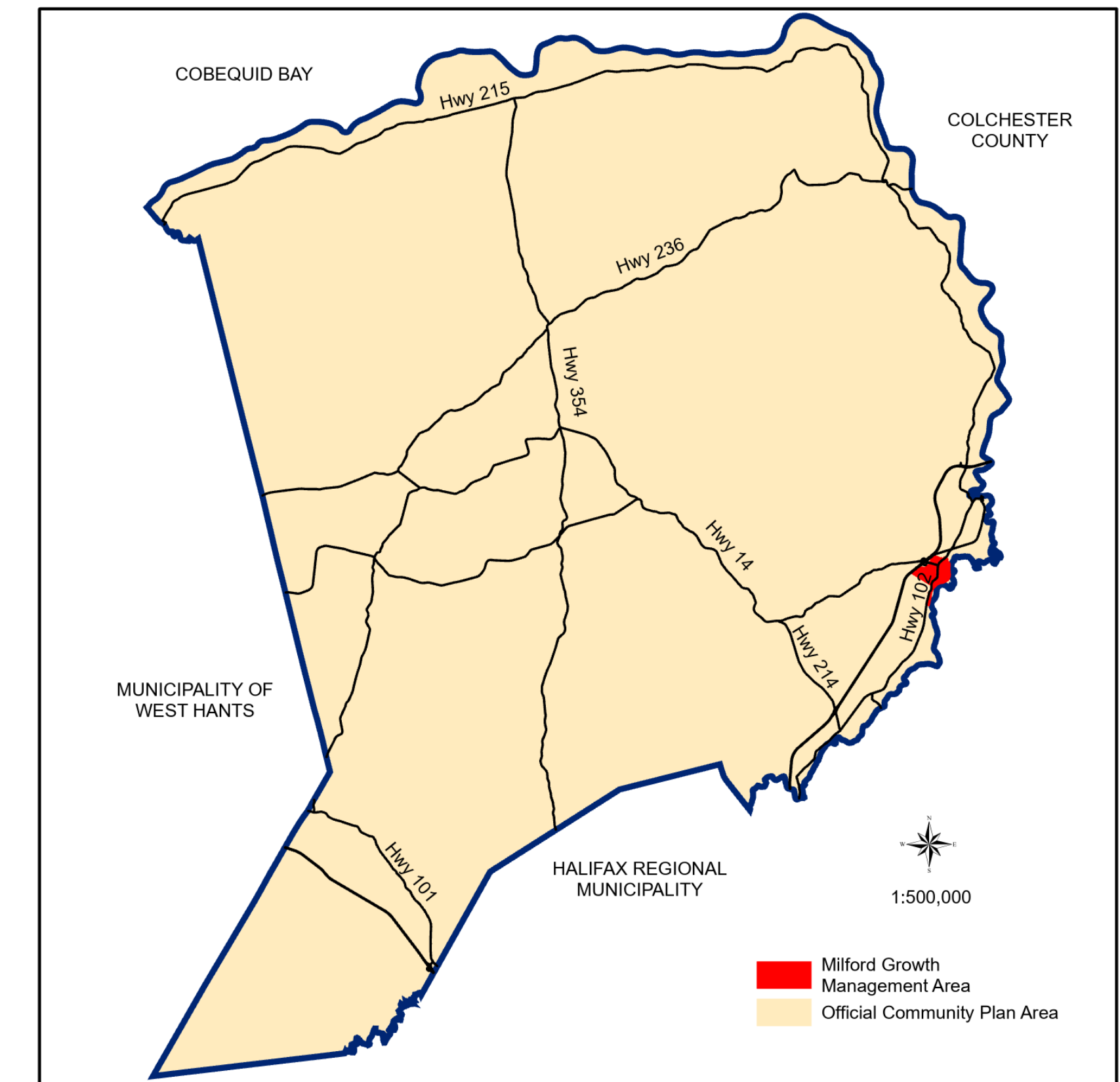
1:16,000



This map was produced by the Planning & Development Department and shall be used as a graphical representation of property boundaries. It is not intended to be used as a survey plan or for legal descriptions.



Approved on:
Amended on:



RESIDENTIAL

- CR - Country Residential
- LR - Lakeshore Residential
- ER - Established Residential Neighbourhood
- MR - Medium Density Residential Neighbourhood
- MH - Mini-Home

COMMERCIAL

- GC - General Commercial
- HC - Highway Commercial
- RC - Regional Commercial
- BP - Business Park
- IC - Industrial Commercial

MIXED USE

- MC - Mixed Use Centre
- VC - Village Core
- WCDD - Walkable Comprehensive Development District

RURAL

- AR - Agricultural Reserve
- RU - Rural Use
- RU-2 - Rural Use North
- RCDD - Rural Comprehensive Development District

COMMUNITY USE

- CU - Community Use

ENVIRONMENTAL

- HF - High Risk Floodplain
- MF - Moderate Risk Floodplain Overlay
- WS - Water Supply
- WG - Watercourse Greenbelt
- WI - Water Intake Overlay
- WP - Water Protection Overlay
- SAP-1 - Shubenacadie Aquifer Protection Overlay
- SAP-2 - Shubenacadie Aquifer Protection Overlay
- SAP-3 - Shubenacadie Aquifer Protection Overlay
- MGW - Milford Groundwater Overlay
- FF - Fundy Flood Risk Overlay
- FE - Fundy Erosion Overlay

OTHER

- IR-14 - Indian Brook 14
- Growth Management Areas / Growth Reserve Areas
- Potential Wetland

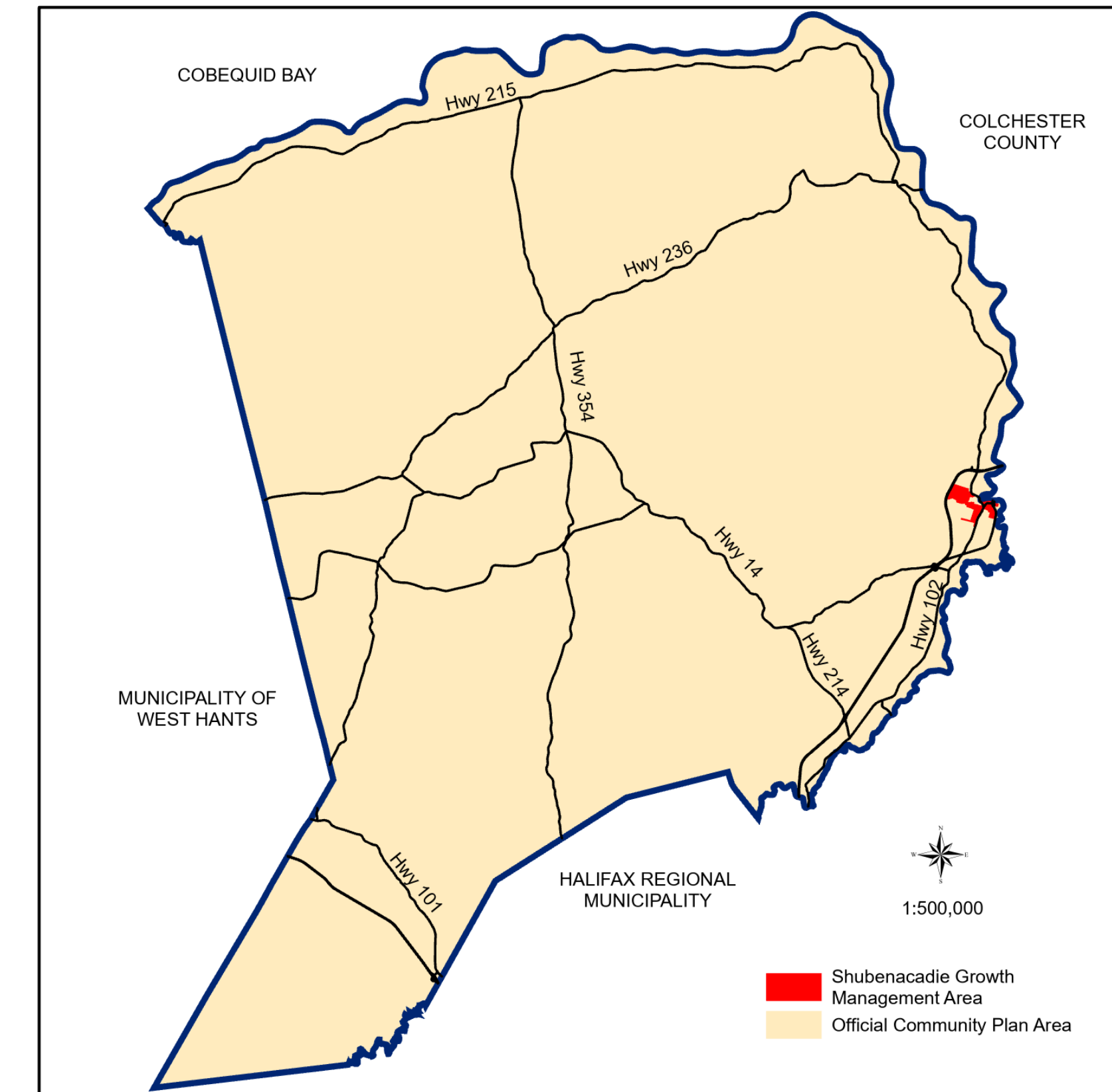
1: 5,500



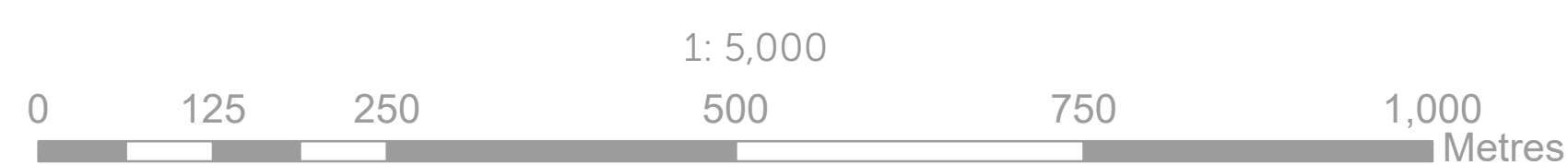
This map was produced by the Planning & Development Department and shall be used as a graphical representation of property boundaries. It is not intended to be used as a survey plan or for legal descriptions.



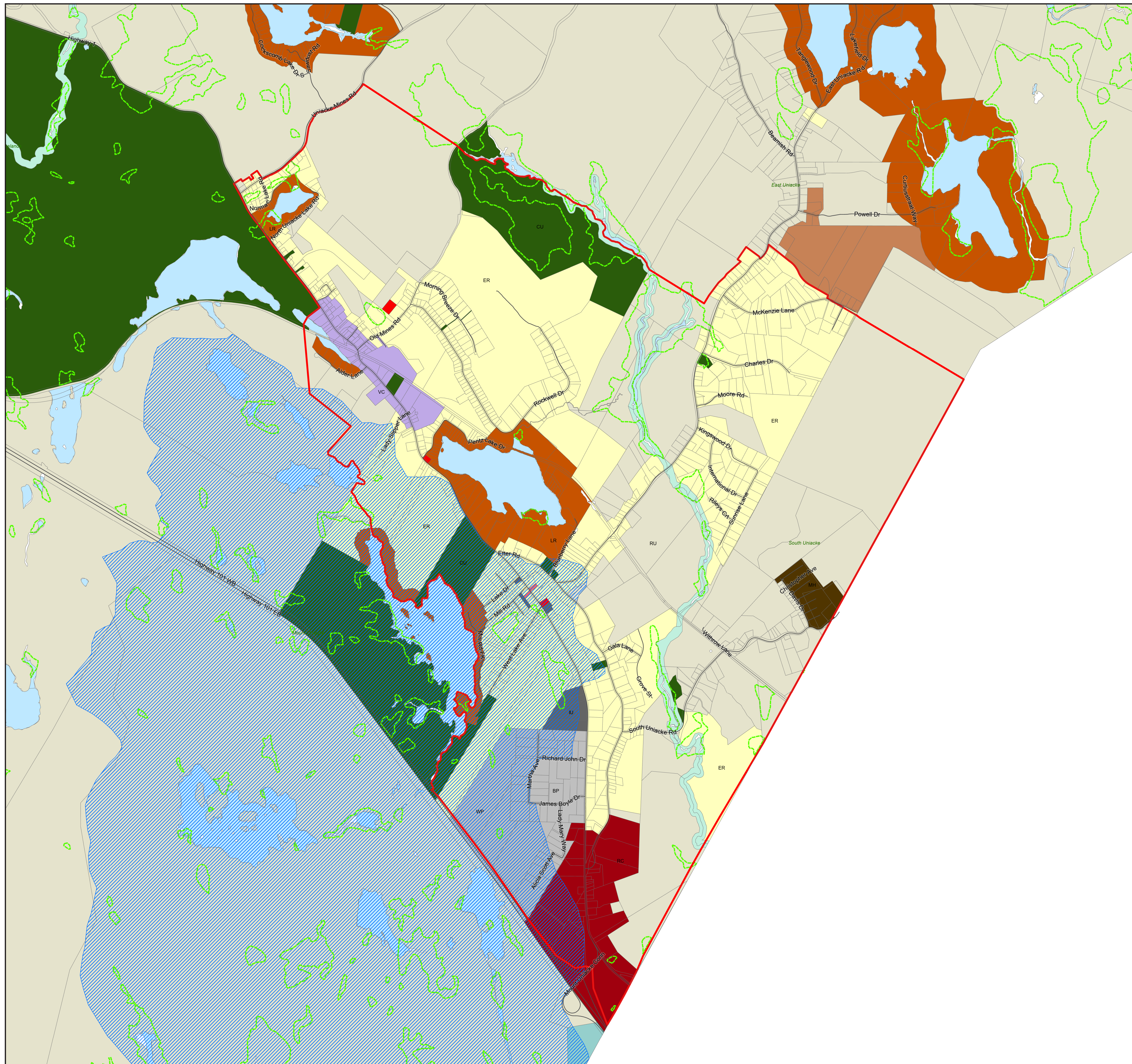
Approved on:
Amended on:



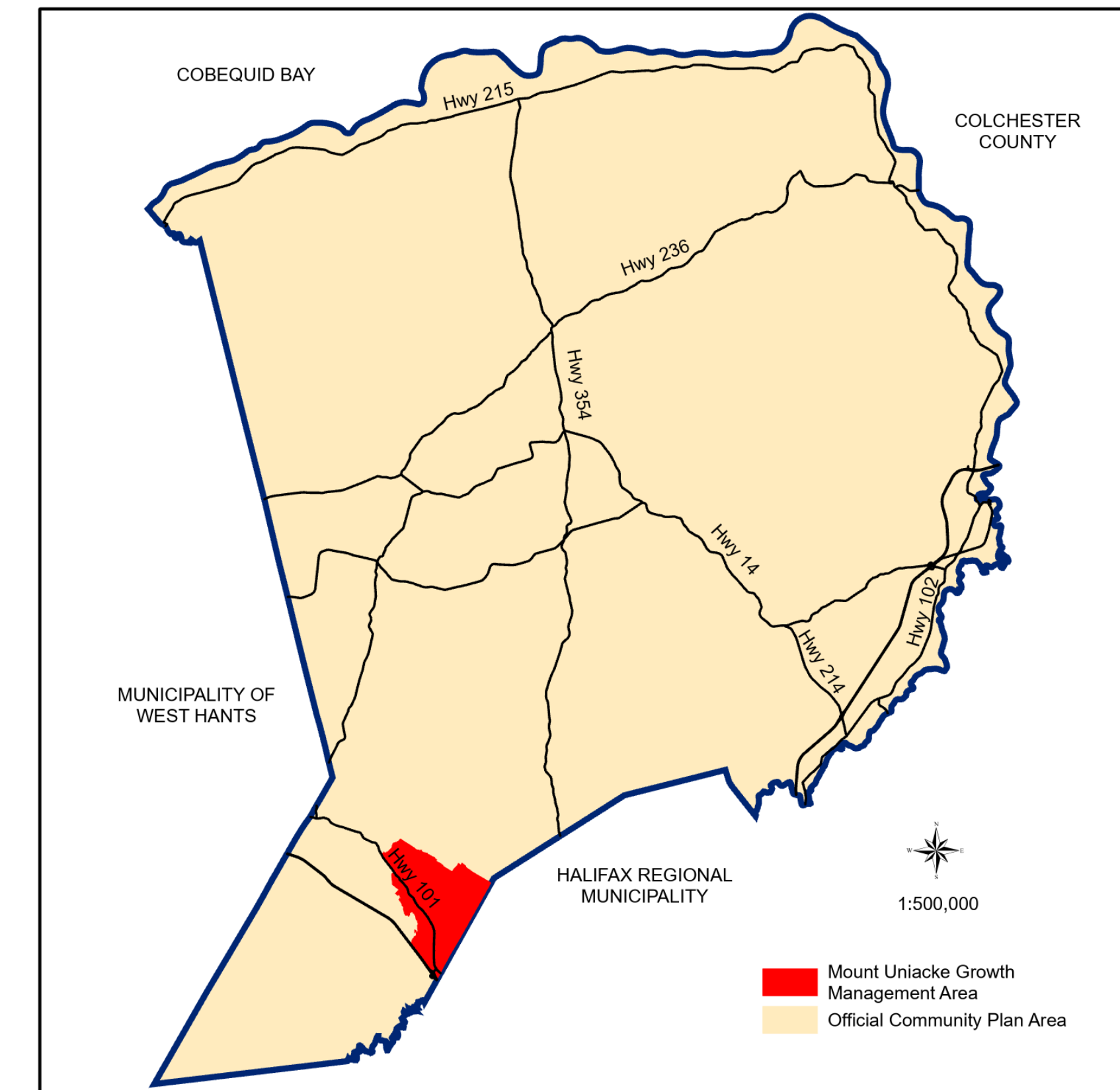
RESIDENTIAL	COMMERCIAL
CR - Country Residential	GC - General Commercial
LR- Lakeshore Residential	HC - Highway Commercial
ER - Established Residential Neighbourhood	RC - Regional Commercial
MR - Medium Density Residential Neighbourhood	BP - Business Park
MH - Mini-Home	IC - Industrial Commercial
MIXED USE	RURAL
MC - Mixed Use Centre	AR - Agricultural Reserve
VC - Village Core	RU - Rural Use
WCDD - Walkable Comprehensive Development District	RU-2 - Rural Use North
	RCDD - Rural Comprehensive Development District
COMMUNITY USE	ENVIRONMENTAL
CU - Community Use	HF - High Risk Floodplain
	MF - Moderate Risk Floodplain Overlay
OTHER	WS - Water Supply
IR-14 - Indian Brook 14	WG - Watercourse Greenbelt
Growth Management Areas / Growth Reserve Areas	WI - Water Intake Overlay
Potential Wetland	WP - Water Protection Overlay
	SAP-1 - Shubenacadie Aquifer Protection Overlay
	SAP-2 - Shubenacadie Aquifer Protection Overlay
	SAP-3 - Shubenacadie Aquifer Protection Overlay
	MGW - Milford Groundwater Overlay
	FF - Fundy Flood Risk Overlay
	FE - Fundy Erosion Overlay



This map was produced by the Planning & Development Department and shall be used as a graphical representation of property boundaries. It is not intended to be used as a survey plan or for legal descriptions.



Approved on:
Amended on:



RESIDENTIAL

- CR - Country Residential
- LR- Lakeshore Residential
- ER - Established Residential Neighbourhood
- MR - Medium Density Residential Neighbourhood
- MH - Mini-Home

COMMERCIAL

- GC - General Commercial
- HC - Highway Commercial
- RC - Regional Commercial
- BP - Business Park
- IC - Industrial Commercial

MIXED USE

- MC - Mixed Use Centre
- VC - Village Core
- WCDD - Walkable Comprehensive Development District

RURAL

- AR - Agricultural Reserve
- RU - Rural Use
- RU-2 - Rural Use North
- RCDD - Rural Comprehensive Development District

COMMUNITY USE

- CU - Community Use

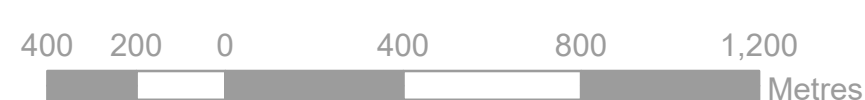
ENVIRONMENTAL

- HF - High Risk Floodplain
- MF - Moderate Risk Floodplain Overlay
- WS - Water Supply
- WG - Watercourse Greenbelt
- WI - Water Intake Overlay
- WP - Water Protection Overlay
- SAP-1 - Shubenacadie Aquifer Protection Overlay
- SAP-2 - Shubenacadie Aquifer Protection Overlay
- SAP-3 - Shubenacadie Aquifer Protection Overlay
- MGW - Milford Groundwater Overlay
- FF - Fundy Flood Risk Overlay
- FE - Fundy Erosion Overlay

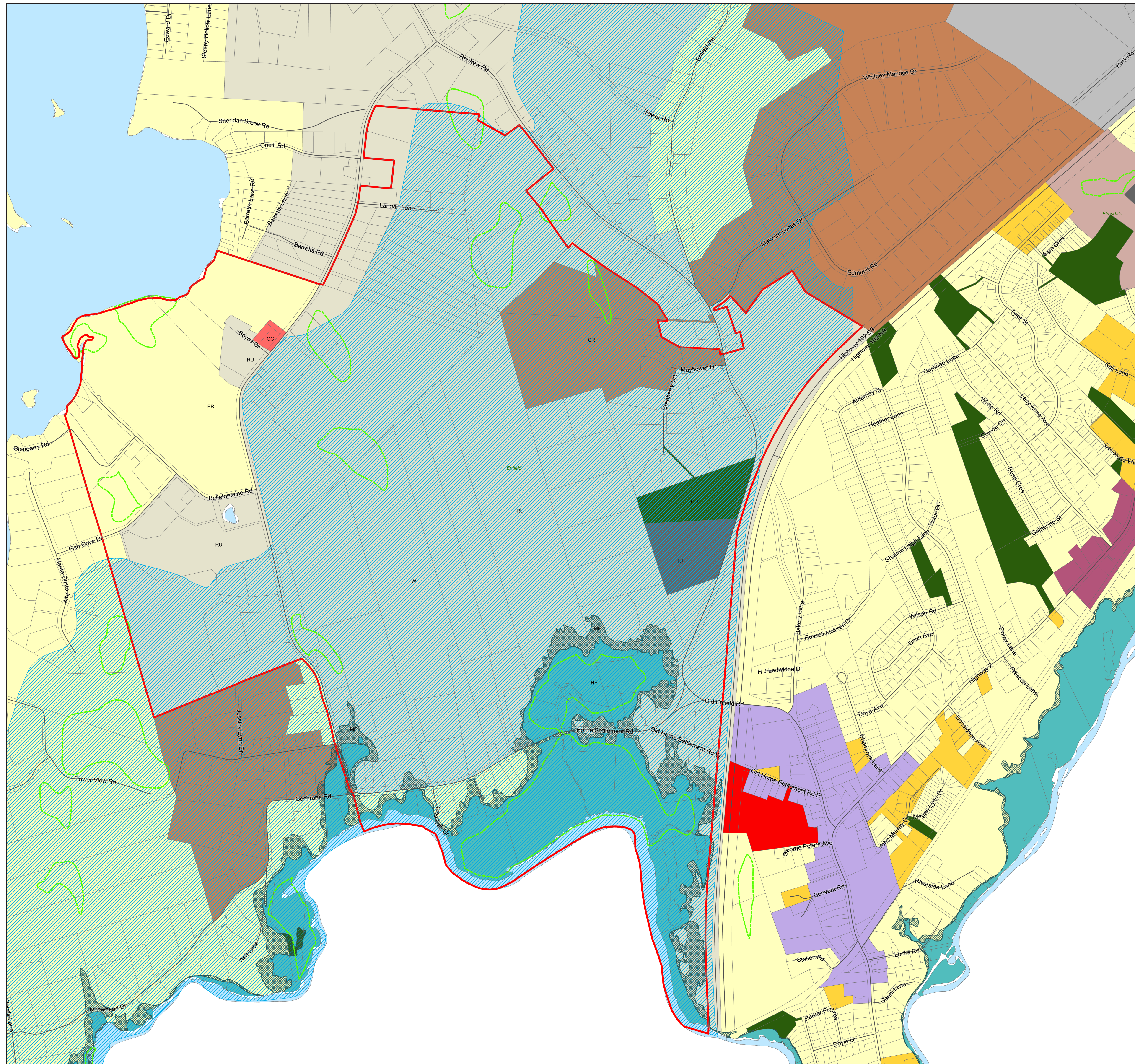
OTHER

- IR-14 - Indian Brook 14
- Growth Management Areas / Growth Reserve Areas
- Potential Wetland

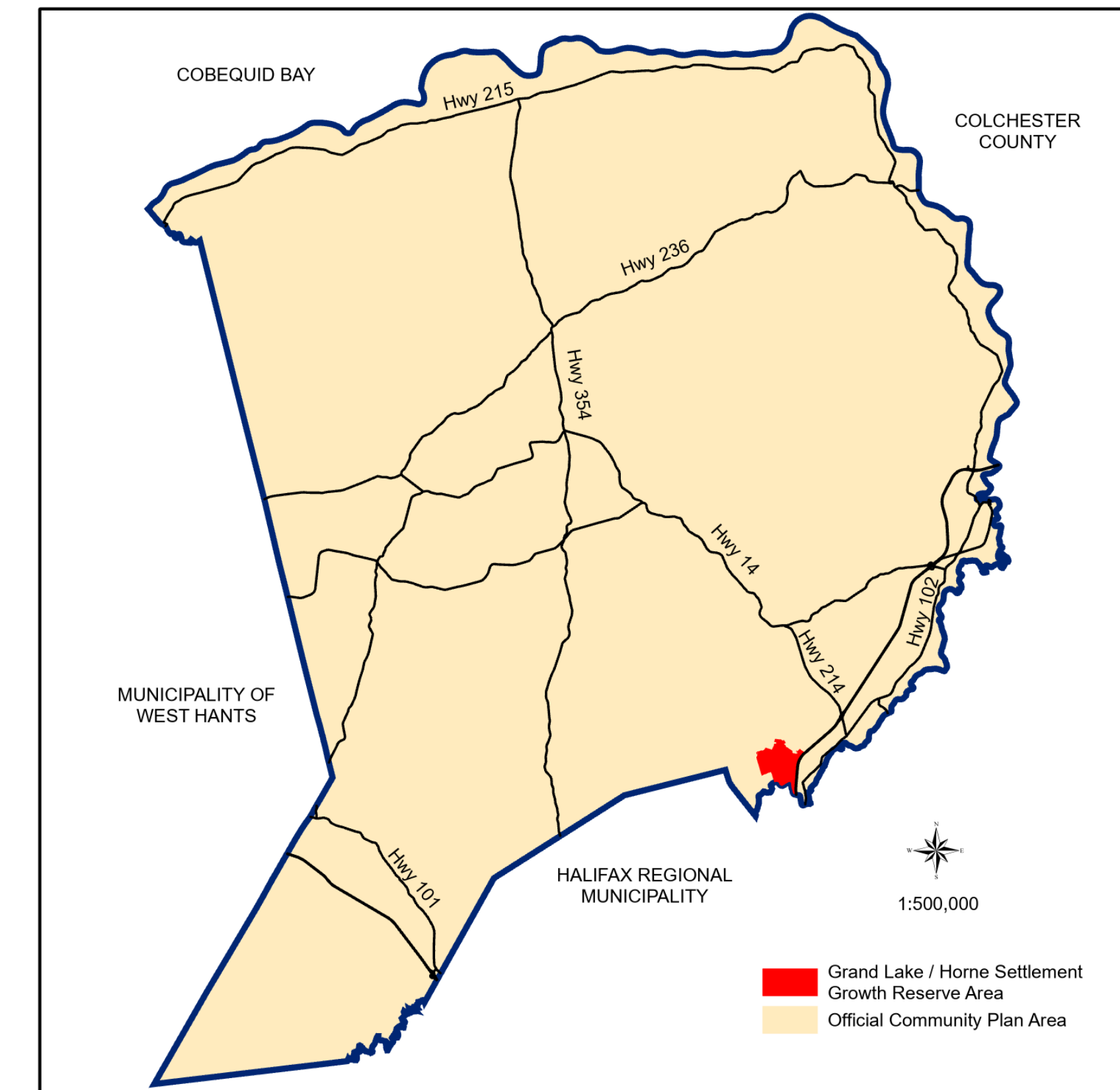
1: 15,000



This map was produced by the Planning & Development Department and shall be used as a graphical representation of property boundaries. It is not intended to be used as a survey plan or for legal descriptions.



Approved on:
Amended on:



RESIDENTIAL

- CR - Country Residential
- LR- Lakeshore Residential
- ER - Established Residential Neighbourhood
- MR - Medium Density Residential Neighbourhood
- MH - Mini-Home

COMMERCIAL

- GC - General Commercial
- HC - Highway Commercial
- RC - Regional Commercial
- BP - Business Park
- IC - Industrial Commercial

MIXED USE

- MC - Mixed Use Centre
- VC - Village Core
- WCDD - Walkable Comprehensive Development District

RURAL

- AR - Agricultural Reserve
- RU - Rural Use
- RU-2 - Rural Use North
- RCDD - Rural Comprehensive Development District

COMMUNITY USE

- CU - Community Use

ENVIRONMENTAL

- HF - High Risk Floodplain
- MF - Moderate Risk Floodplain Overlay
- WS - Water Supply
- WG - Watercourse Greenbelt
- WI - Water Intake Overlay
- WP - Water Protection Overlay
- SAP-1 - Shubenacadie Aquifer Protection Overlay
- SAP-2 - Shubenacadie Aquifer Protection Overlay
- SAP-3 - Shubenacadie Aquifer Protection Overlay
- MGW - Milford Groundwater Overlay
- FF - Fundy Flood Risk Overlay
- FE - Fundy Erosion Overlay

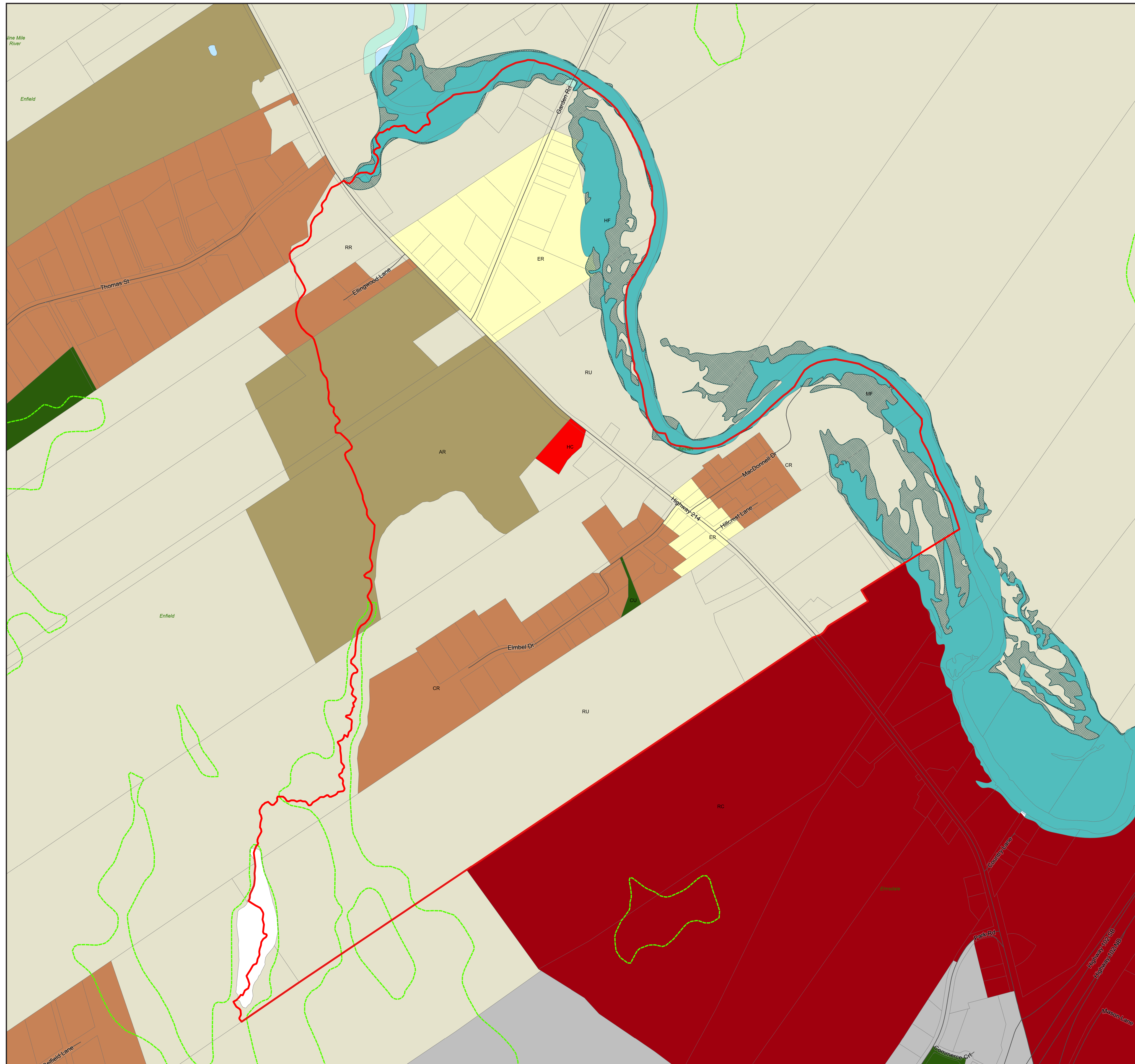
OTHER

- IR-14 - Indian Brook 14
- Growth Management Areas / Growth Reserve Areas
- Potential Wetland

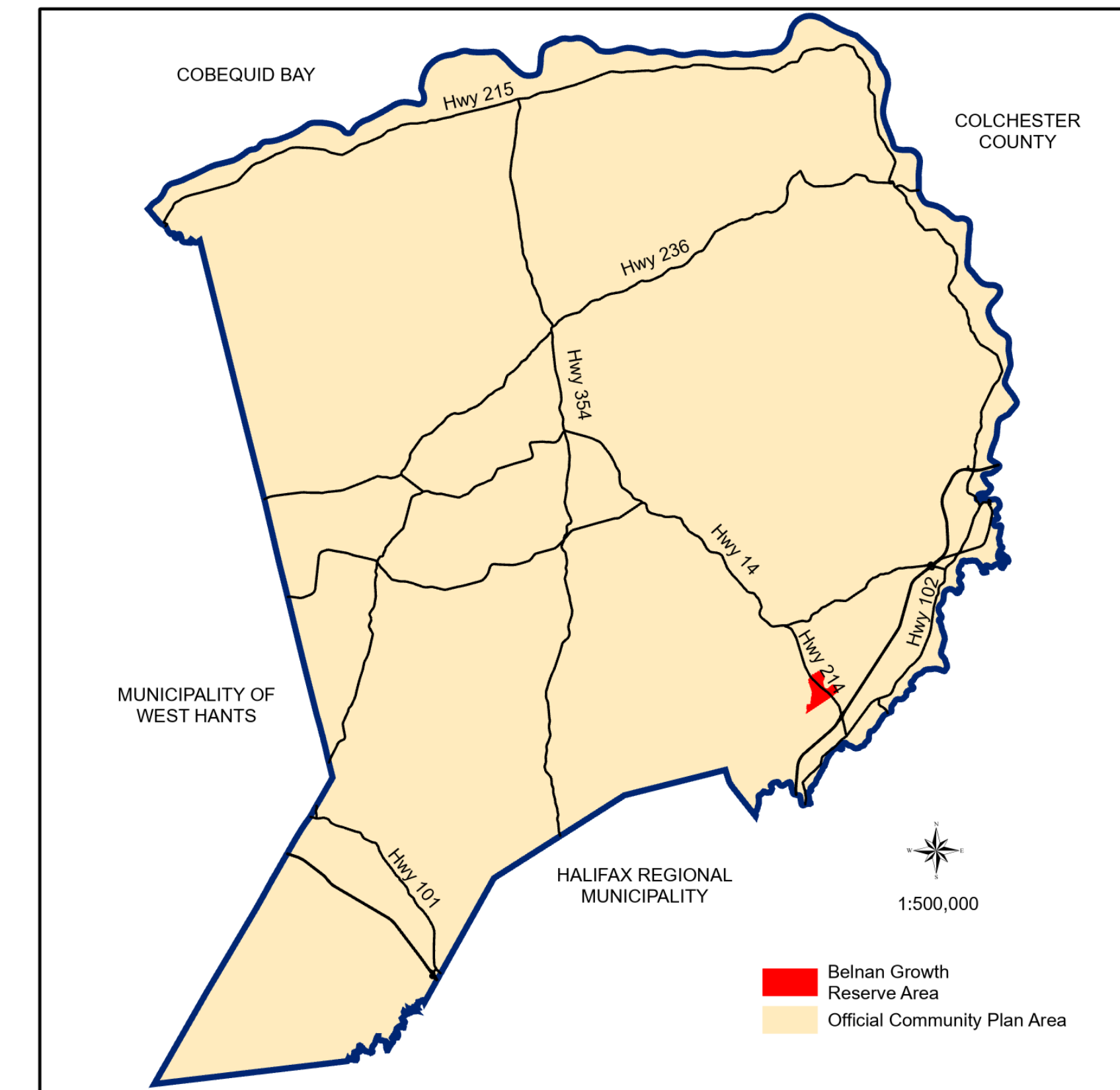
1: 6,000



This map was produced by the Planning & Development Department and shall be used as a graphical representation of property boundaries. It is not intended to be used as a survey plan or for legal descriptions.



Approved on:
Amended on:



RESIDENTIAL

- CR - Country Residential
- LR- Lakeshore Residential
- ER - Established Residential Neighbourhood
- MR - Medium Density Residential Neighbourhood
- MH - Mini-Home

COMMERCIAL

- GC - General Commercial
- HC - Highway Commercial
- RC - Regional Commercial
- BP - Business Park
- IC - Industrial Commercial

MIXED USE

- MC - Mixed Use Centre
- VC - Village Core
- WCDD - Walkable Comprehensive Development District

RURAL

- AR - Agricultural Reserve
- RU - Rural Use
- RU-2 - Rural Use North
- RCDD - Rural Comprehensive Development District

COMMUNITY USE

- CU - Community Use

ENVIRONMENTAL

- HF - High Risk Floodplain
- MF - Moderate Risk Floodplain Overlay
- WS - Water Supply
- WG - Watercourse Greenbelt
- WI - Water Intake Overlay
- WP - Water Protection Overlay
- SAP-1 - Shubenacadie Aquifer Protection Overlay
- SAP-2 - Shubenacadie Aquifer Protection Overlay
- SAP-3 - Shubenacadie Aquifer Protection Overlay
- MGW - Milford Groundwater Overlay
- FF - Fundy Flood Risk Overlay
- FE - Fundy Erosion Overlay

OTHER

- IR-14 - Indian Brook 14
- Growth Management Areas / Growth Reserve Areas
- Potential Wetland

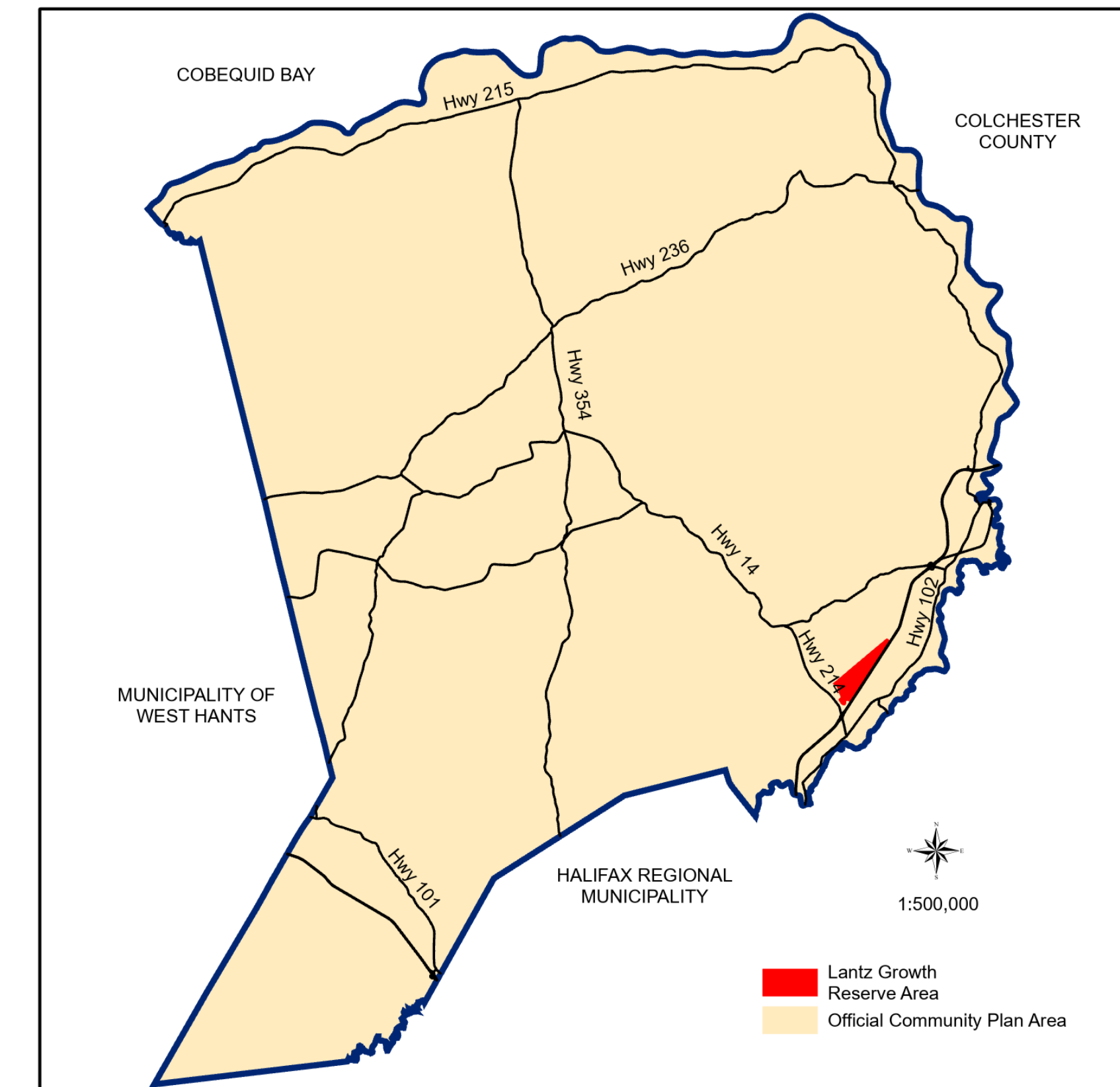
1: 4,500



This map was produced by the Planning & Development Department and shall be used as a graphical representation of property boundaries. It is not intended to be used as a survey plan or for legal descriptions.



Approved on:
Amended on:



RESIDENTIAL

- CR - Country Residential
- LR - Lakeshore Residential
- ER - Established Residential Neighbourhood
- MR - Medium Density Residential Neighbourhood
- MH - Mini-Home

COMMERCIAL

- GC - General Commercial
- HC - Highway Commercial
- RC - Regional Commercial
- BP - Business Park
- IC - Industrial Commercial

MIXED USE

- MC - Mixed Use Centre
- VC - Village Core
- WCDD - Walkable Comprehensive Development District

RURAL

- AR - Agricultural Reserve
- RU - Rural Use
- RU-2 - Rural Use North
- RCDD - Rural Comprehensive Development District

COMMUNITY USE

- CU - Community Use

ENVIRONMENTAL

- HF - High Risk Floodplain
- MF - Moderate Risk Floodplain Overlay
- WS - Water Supply
- WG - Watercourse Greenbelt
- WI - Water Intake Overlay
- WP - Water Protection Overlay
- SAP-1 - Shubenacadie Aquifer Protection Overlay
- SAP-2 - Shubenacadie Aquifer Protection Overlay
- SAP-3 - Shubenacadie Aquifer Protection Overlay
- MGW - Milford Groundwater Overlay
- FF - Fundy Flood Risk Overlay
- FE - Fundy Erosion Overlay

OTHER

- IR-14 - Indian Brook 14
- Growth Management Areas / Growth Reserve Areas
- Potential Wetland

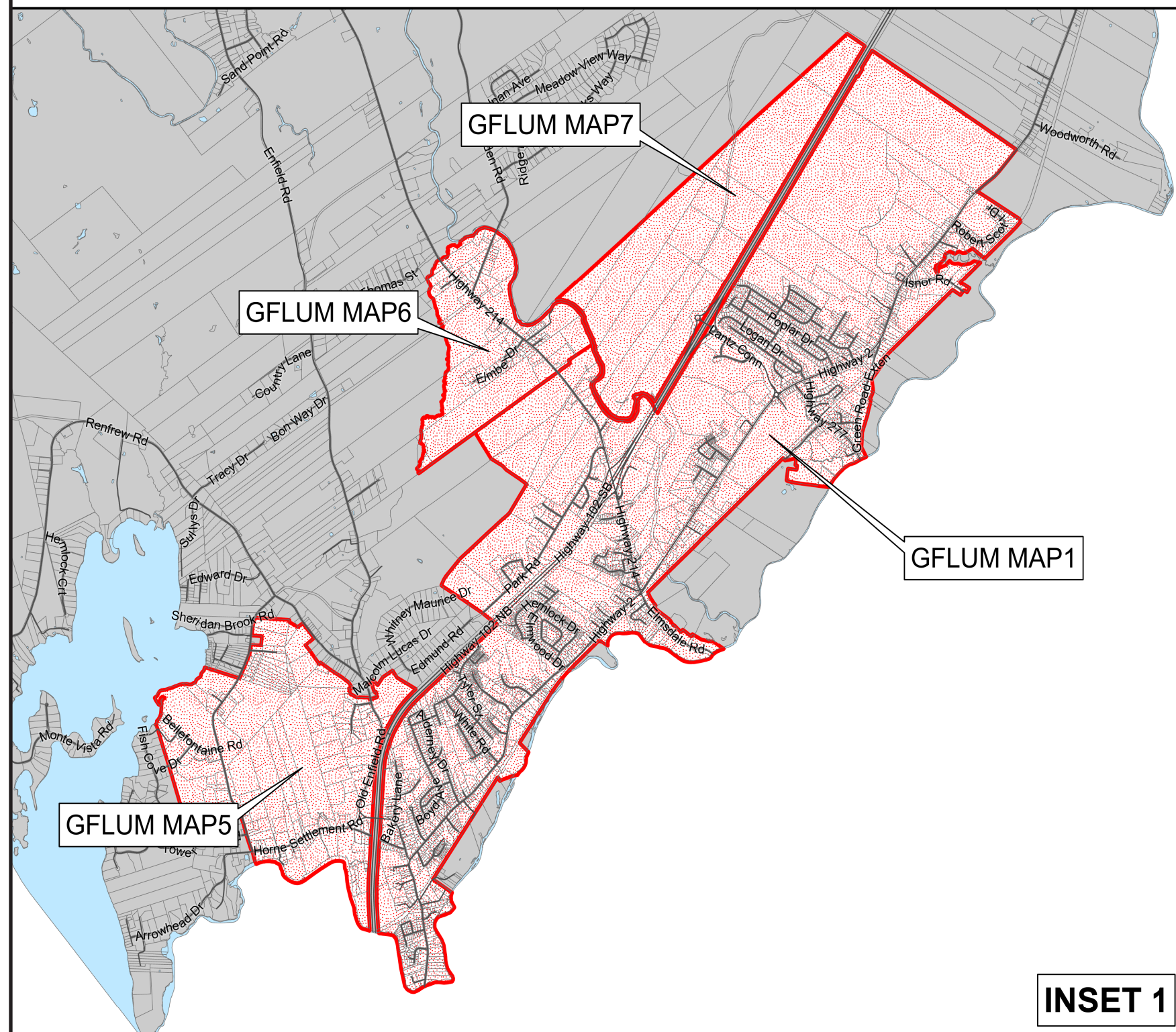
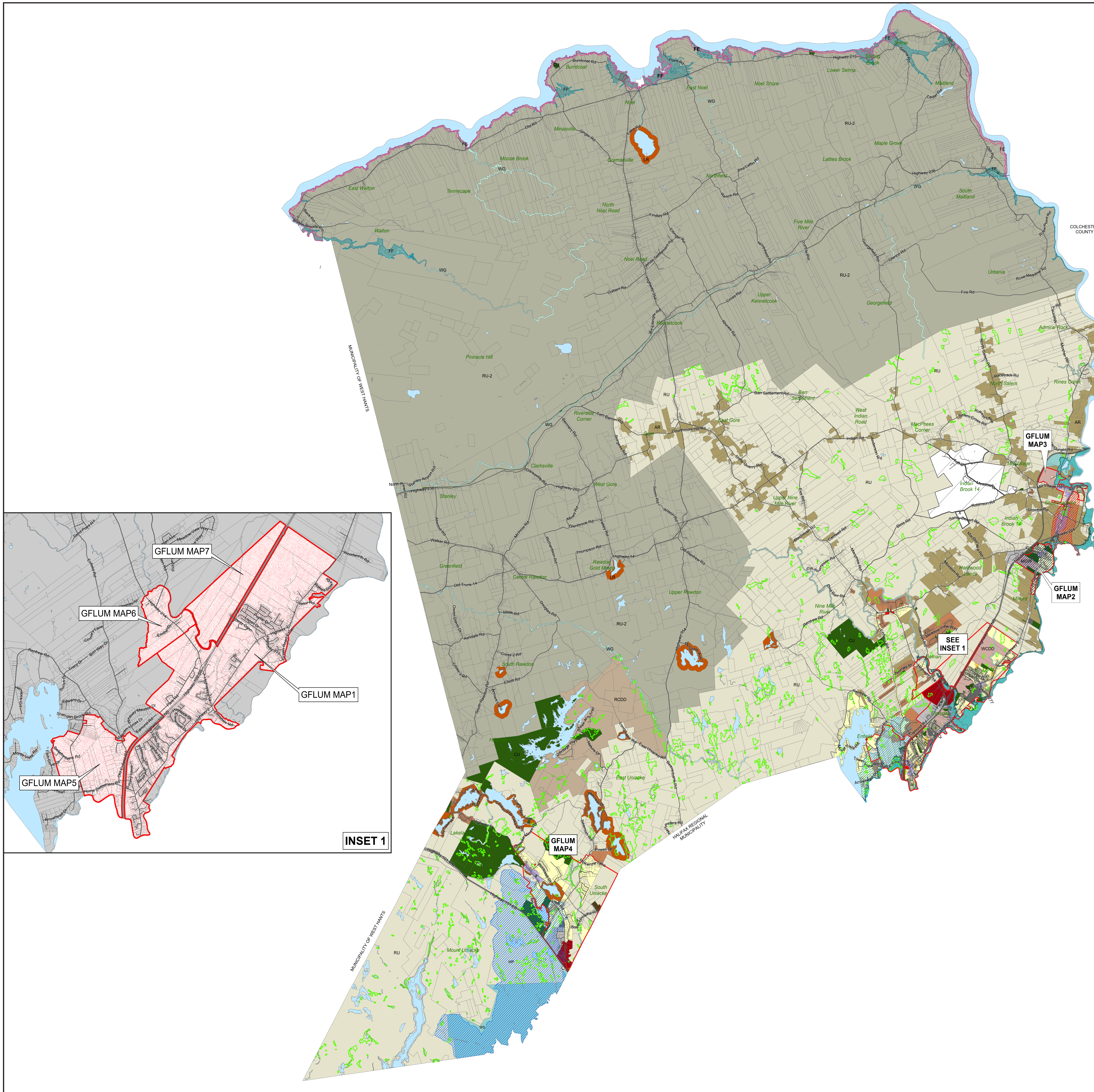
1: 8,000



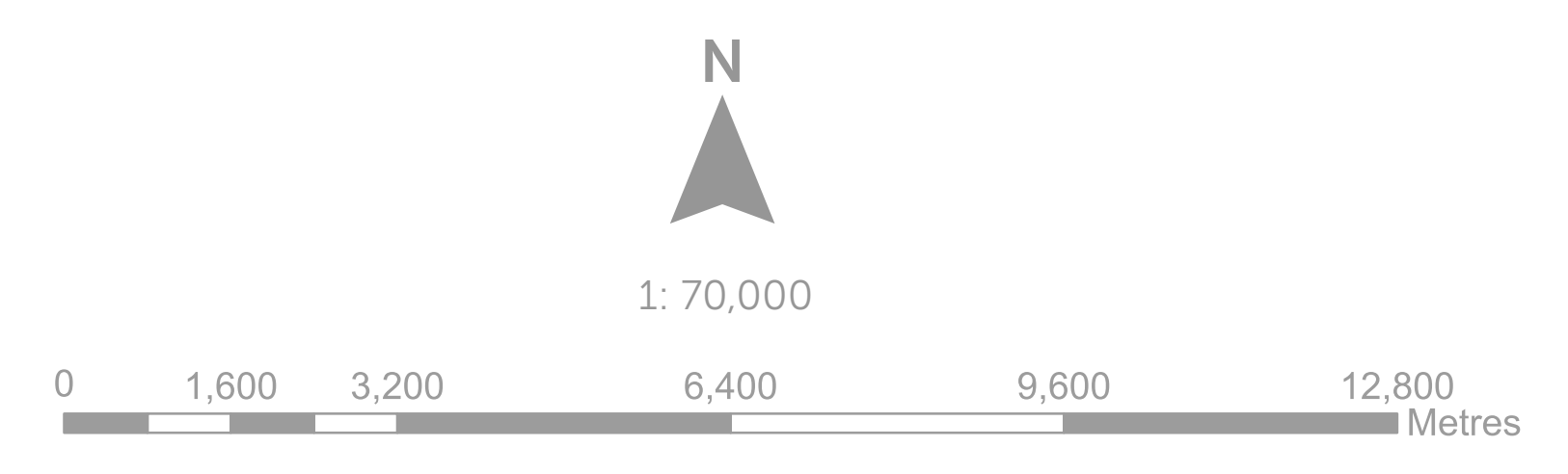
This map was produced by the Planning & Development Department and shall be used as a graphical representation of property boundaries. It is not intended to be used as a survey plan or for legal descriptions.



Approved on:
Amended on:



RESIDENTIAL		COMMERCIAL	
	CR - Country Residential		GC - General Commercial
	LR - Lakeshore Residential		HC - Highway Commercial
	ER - Established Residential Neighbourhood		RC - Regional Commercial
	MR - Medium Density Residential Neighbourhood		BP - Business Park
	MH - Mini-Home		IC - Industrial Commercial
MIXED USE		RURAL	
	MC - Mixed Use Centre		AR - Agricultural Reserve
	VC - Village Core		RU - Rural Use
	WCDD - Walkable Comprehensive Development District		RU-2 - Rural Use North
	RCDD - Rural Comprehensive Development District		RCDD - Rural Comprehensive Development District
COMMUNITY USE		ENVIRONMENTAL	
	CU - Community Use		HF - High Risk Floodplain
	IR-14 - Indian Brook 14		MF - Moderate Risk Floodplain Overlay
	Growth Management Areas / Growth Reserve Areas		WS - Water Supply
	Potential Wetland		WG - Watercourse Greenbelt
			WI - Water Intake Overlay
			WP - Water Protection Overlay
			SAP-1 - Shubenacadie Aquifer Protection Overlay
			SAP-2 - Shubenacadie Aquifer Protection Overlay
			SAP-3 - Shubenacadie Aquifer Protection Overlay
			MGW - Milford Groundwater Overlay
			FF - Fundy Flood Risk Overlay
			FE - Fundy Erosion Overlay



This map was produced by the Planning & Development Department and shall be used as a graphical representation of property boundaries. It is not intended to be used as a survey plan or for legal descriptions.