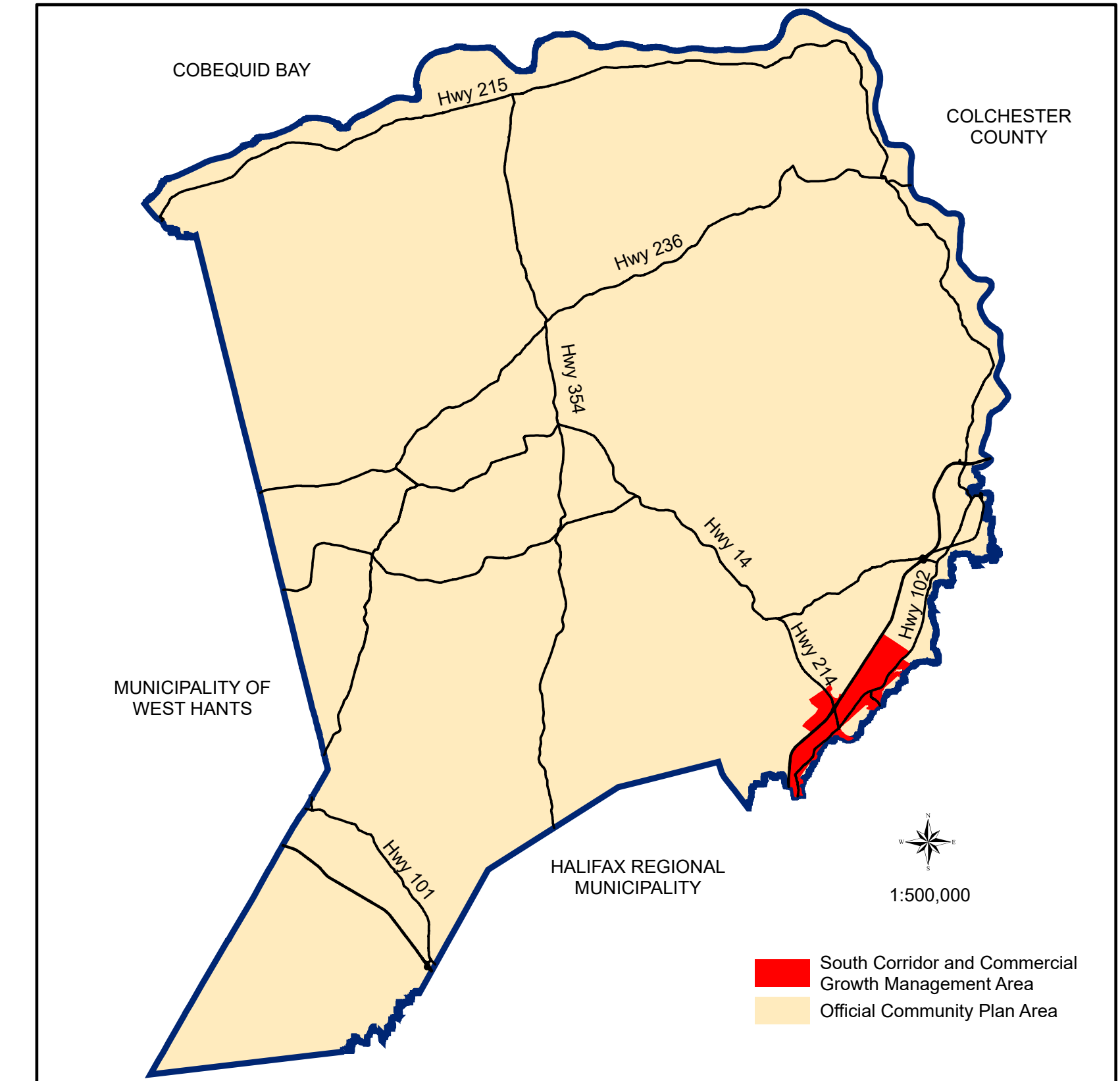


Approved on: July 27, 2023  
Amended on: January 24, 2024; May 21, 2025; November 26, 2025



RESIDENTIAL

- CR - Country Residential
- LR - Lakeshore Residential
- ER - Established Residential Neighbourhood
- MR - Medium Density Residential Neighbourhood
- MH - Mini-Home

COMMERCIAL

- GC - General Commercial
- HC - Highway Commercial
- RC - Regional Commercial
- BP - Business Park
- IC - Industrial Commercial

MIXED USE

- MC - Mixed Use Centre
- VC - Village Core
- WCCD - Walkable Comprehensive Development District
- LCCD - Lantz Comprehensive Development District

RURAL

- AR - Agricultural Reserve
- RU - Rural Use
- RU-2 - Rural Use North
- RCDD - Rural Comprehensive Development District

COMMUNITY USE

- CU - Community Use

ENVIRONMENTAL

- HF - High Risk Floodplain
- MF - Moderate Risk Floodplain Overlay
- WS - Water Supply
- WG - Watercourse Greenbelt
- WI - Water Intake Overlay
- WP - Water Protection Overlay
- SAP-1 - Shubenacadie Aquifer Protection Overlay
- SAP-2 - Shubenacadie Aquifer Protection Overlay
- SAP-3 - Shubenacadie Aquifer Protection Overlay
- MGW - Milford Groundwater Overlay

OTHER

- IR-14 - Indian Brook 14
- Growth Management Areas / Growth Reserve Areas
- Potential Wetland

1:16,000

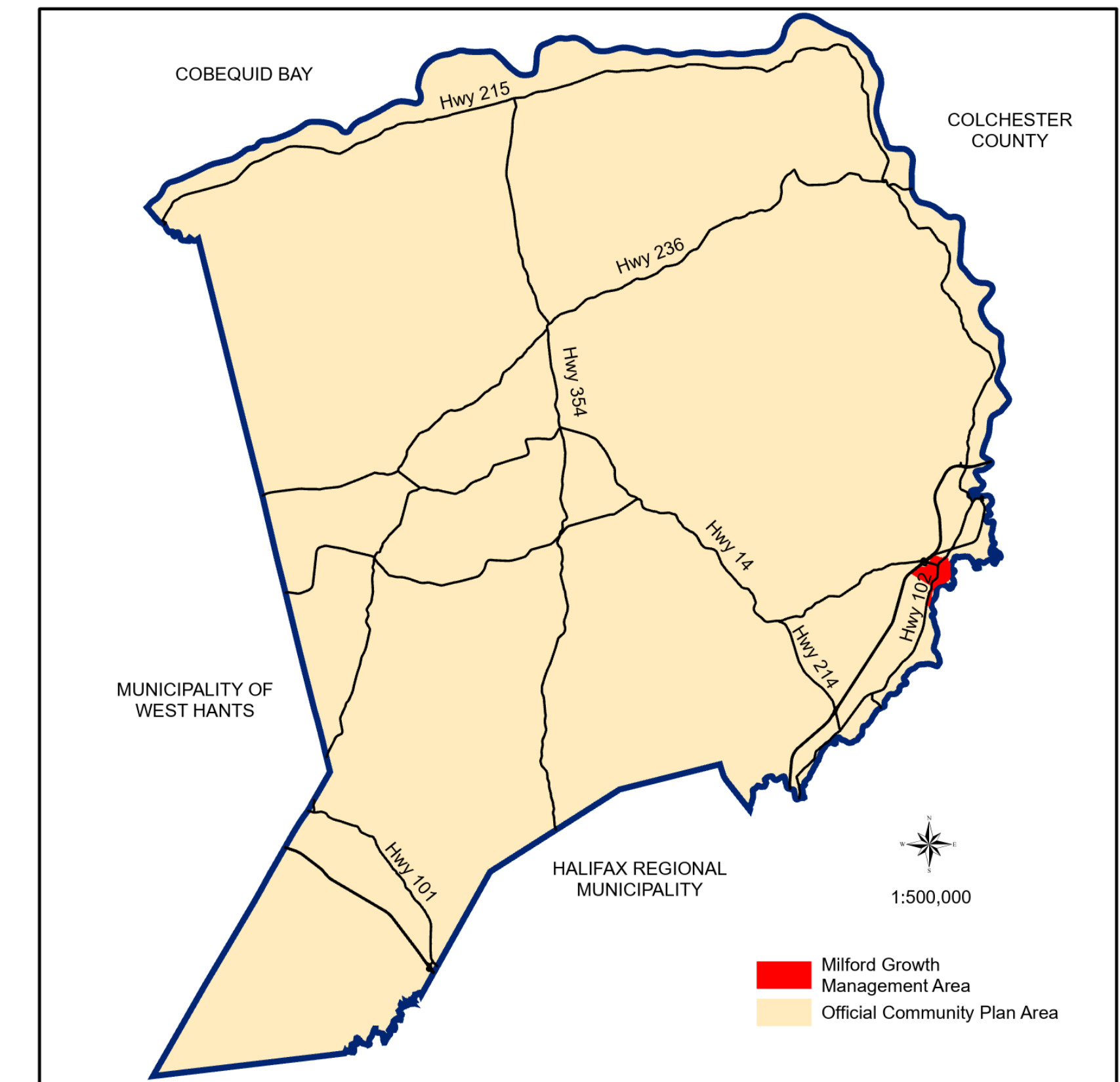
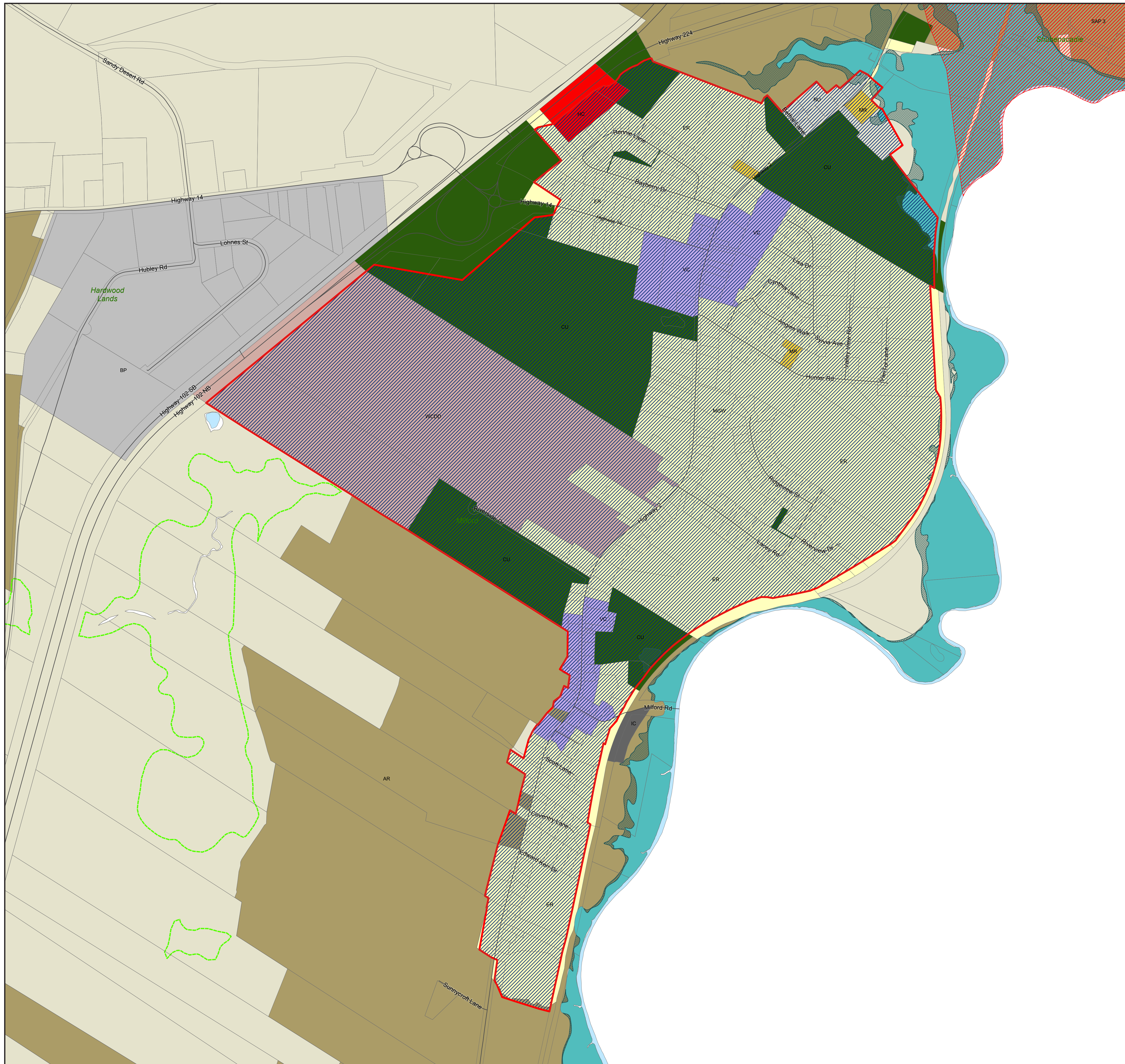


This map was produced by the Planning & Development Department and shall be used as a graphical representation of property boundaries. It is not intended to be used as a survey plan or for legal descriptions.

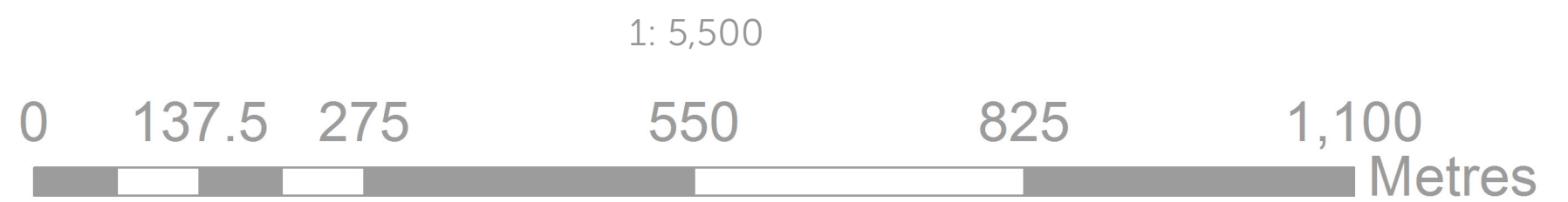




Approved on: July 27, 2023  
Amended on:



RESIDENTIAL		COMMERCIAL	
	CR - Country Residential		GC - General Commercial
	LR - Lakeshore Residential		HC - Highway Commercial
	ER - Established Residential Neighbourhood		RC - Regional Commercial
	MR - Medium Density Residential Neighbourhood		BP - Business Park
	MH - Mini-Home		IC - Industrial Commercial
MIXED USE		RURAL	
	MC - Mixed Use Centre		AR - Agricultural Reserve
	VC - Village Core		RU - Rural Use
	WCDD - Walkable Comprehensive Development District		RU-2 - Rural Use North
	LCDD - Lantz Comprehensive Development District		RCDD - Rural Comprehensive Development District
COMMUNITY USE		ENVIRONMENTAL	
	CU - Community Use		HF - High Risk Floodplain
OTHER			MF - Moderate Risk Floodplain Overlay
	IR-14 - Indian Brook 14		WS - Water Supply
	Growth Management Areas / Growth Reserve Areas		WG - Watercourse Greenbelt
	Potential Wetland		WI - Water Intake Overlay
			WP - Water Protection Overlay
			SAP-1 - Shubenacadie Aquifer Protection Overlay
			SAP-2 - Shubenacadie Aquifer Protection Overlay
			SAP-3 - Shubenacadie Aquifer Protection Overlay
			MGW - Milford Groundwater Overlay

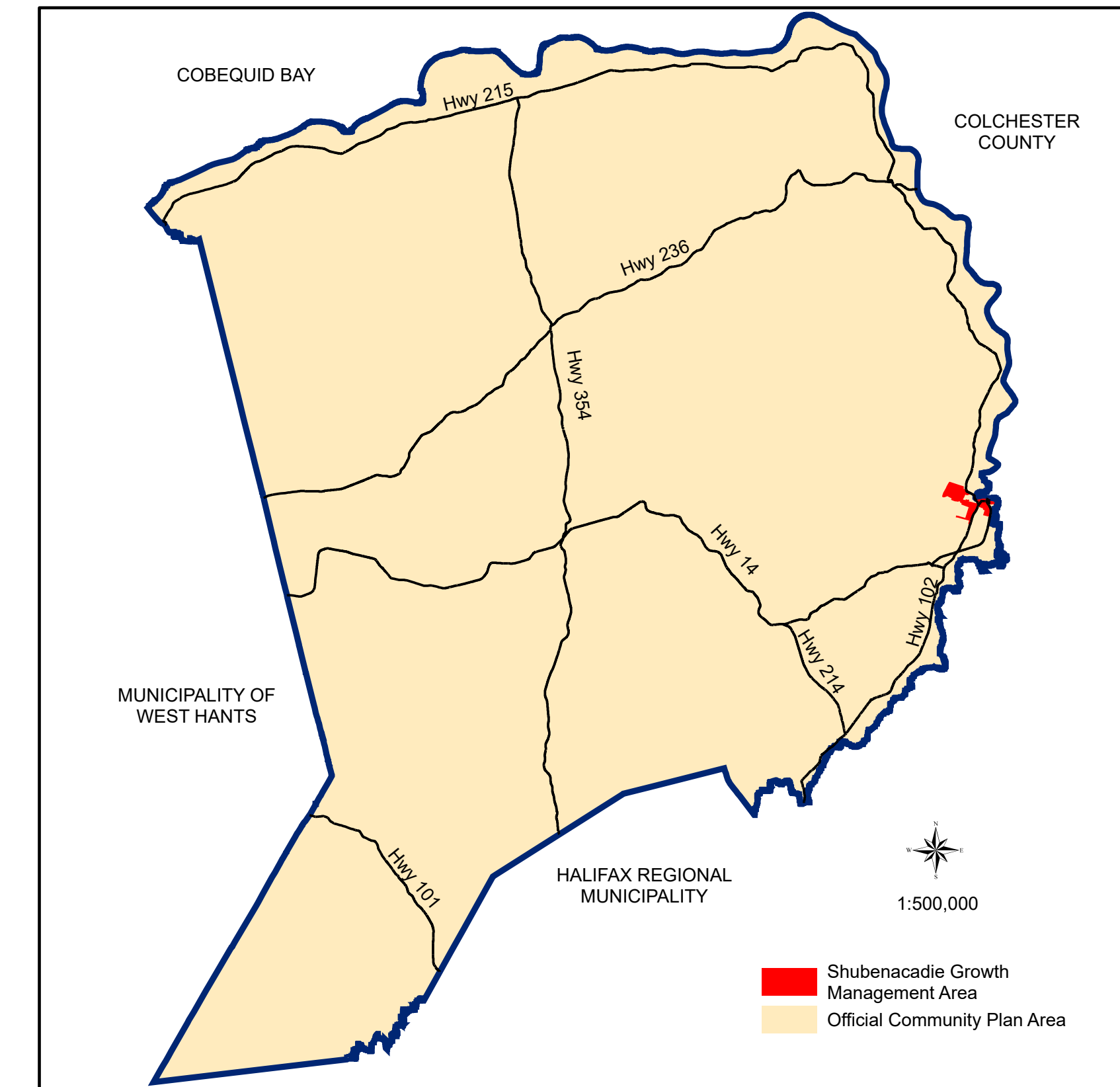


This map was produced by the Planning & Development Department and shall be used as a graphical representation of property boundaries. It is not intended to be used as a survey plan or for legal descriptions.





Approved on: July 27, 2023  
Amended on: September 27, 2023;  
September 25, 2024; November 26, 2025



RESIDENTIAL

- CR - Country Residential
- LR - Lakeshore Residential
- ER - Established Residential Neighbourhood
- MR - Medium Density Residential Neighbourhood
- MH - Mini-Home

COMMERCIAL

- GC - General Commercial
- HC - Highway Commercial
- RC - Regional Commercial
- BP - Business Park
- IC - Industrial Commercial

MIXED USE

- MC - Mixed Use Centre
- VC - Village Core
- WCDD - Walkable Comprehensive Development District
- LCDD - Lantz Comprehensive Development District

RURAL

- AR - Agricultural Reserve
- RU - Rural Use
- RU-2 - Rural Use North
- RCDD - Rural Comprehensive Development District

COMMUNITY USE

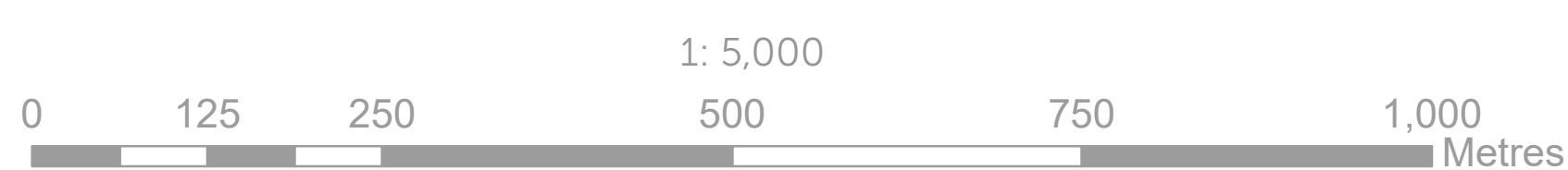
- CU - Community Use

ENVIRONMENTAL

- HF - High Risk Floodplain
- MF - Moderate Risk Floodplain Overlay
- WS - Water Supply
- WG - Watercourse Greenbelt
- WI - Water Intake Overlay
- WP - Water Protection Overlay
- SAP-1 - Shubenacadie Aquifer Protection Overlay
- SAP-2 - Shubenacadie Aquifer Protection Overlay
- SAP-3 - Shubenacadie Aquifer Protection Overlay
- MGW - Milford Groundwater Overlay

OTHER

- IR-14 - Indian Brook 14
- Growth Management Areas / Growth Reserve Areas
- Potential Wetland

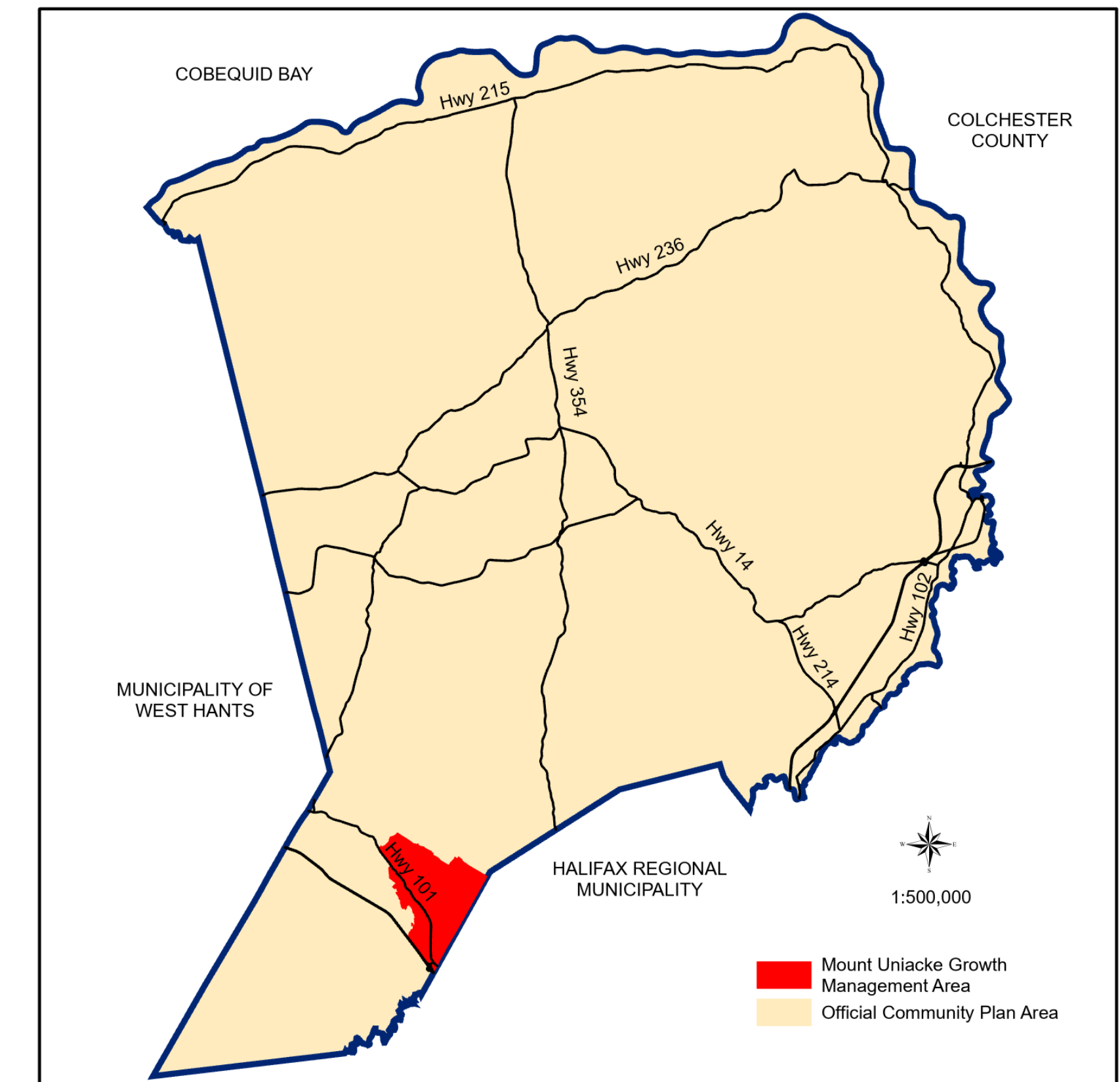
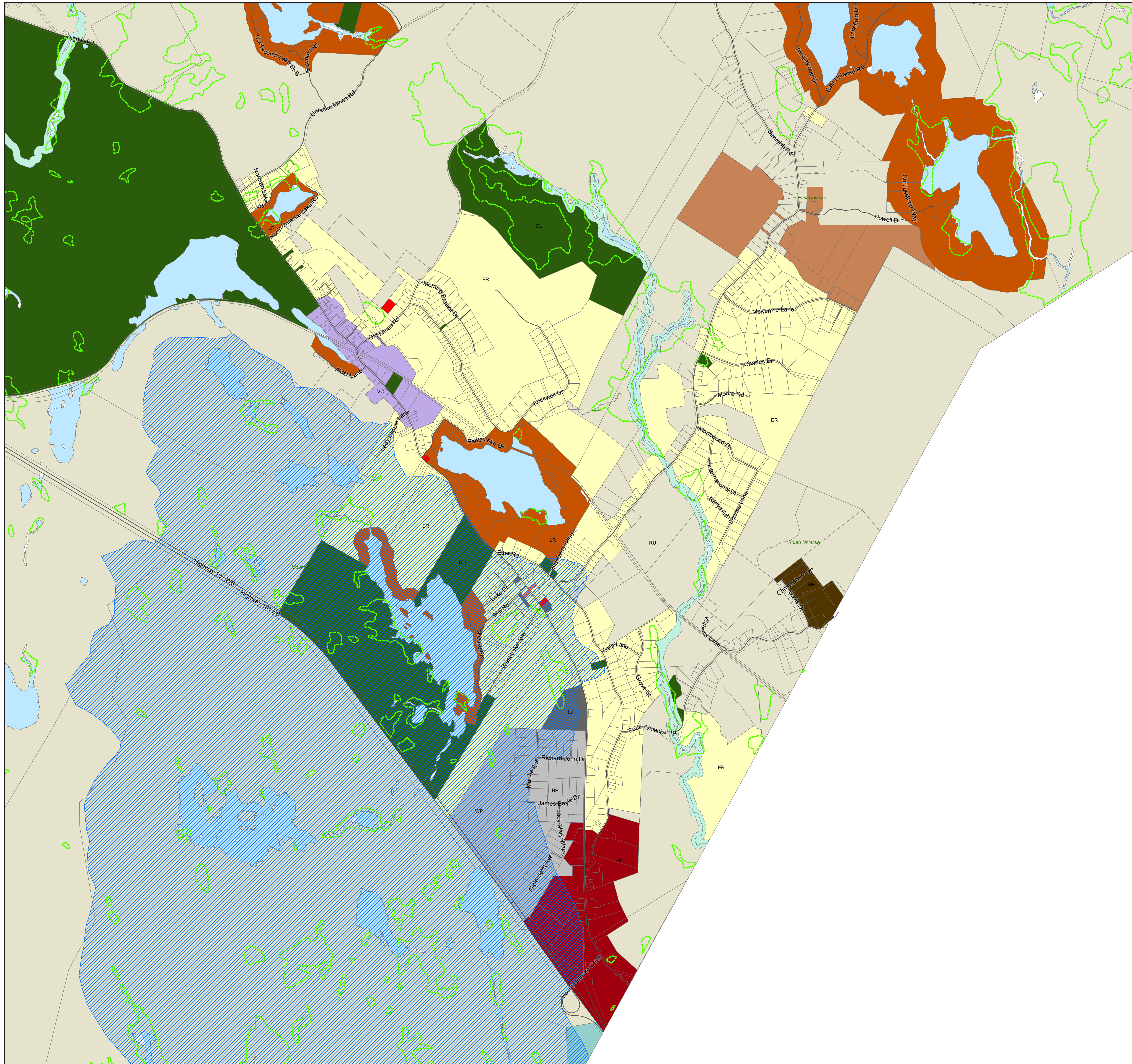


This map was produced by the Planning & Development Department and shall be used as a graphical representation of property boundaries. It is not intended to be used as a survey plan or for legal descriptions.



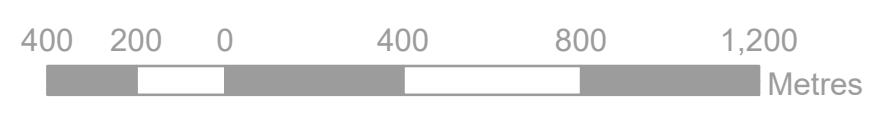


Approved on: July 27, 2023  
Amended on: November 29, 2023;  
September 26, 2024



RESIDENTIAL		COMMERCIAL	
	CR - Country Residential		GC - General Commercial
	LR - Lakeshore Residential		HC - Highway Commercial
	ER - Established Residential Neighbourhood		RC - Regional Commercial
	MR - Medium Density Residential Neighbourhood		BP - Business Park
	MH - Mini-Home		IC - Industrial Commercial
MIXED USE		RURAL	
	MC - Mixed Use Centre		AR - Agricultural Reserve
	VC - Village Core		RU - Rural Use
	WCDD - Walkable Comprehensive Development District		RU-2 - Rural Use North
	RCDD - Rural Comprehensive Development District		RCDD - Rural Comprehensive Development District
COMMUNITY USE		ENVIRONMENTAL	
	CU - Community Use		HF - High Risk Floodplain
	IR-14 - Indian Brook 14		MF - Moderate Risk Floodplain Overlay
	Growth Management Areas / Growth Reserve Areas		WS - Water Supply
	Potential Wetland		WG - Watercourse Greenbelt
			WI - Water Intake Overlay
			WP - Water Protection Overlay
			SAP-1 - Shubenacadie Aquifer Protection Overlay
			SAP-2 - Shubenacadie Aquifer Protection Overlay
			SAP-3 - Shubenacadie Aquifer Protection Overlay
			MGW - Milford Groundwater Overlay

1: 15,000

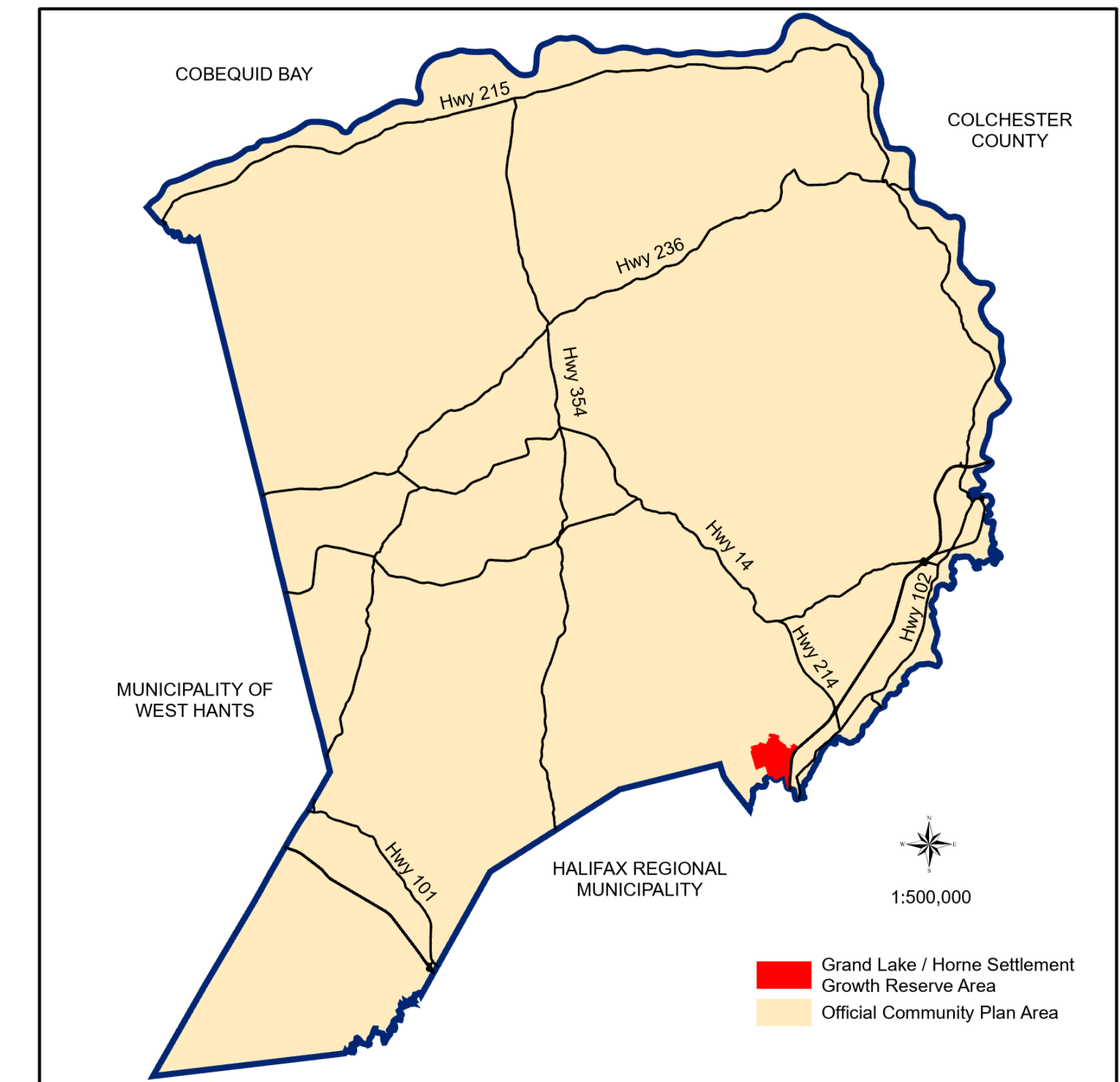
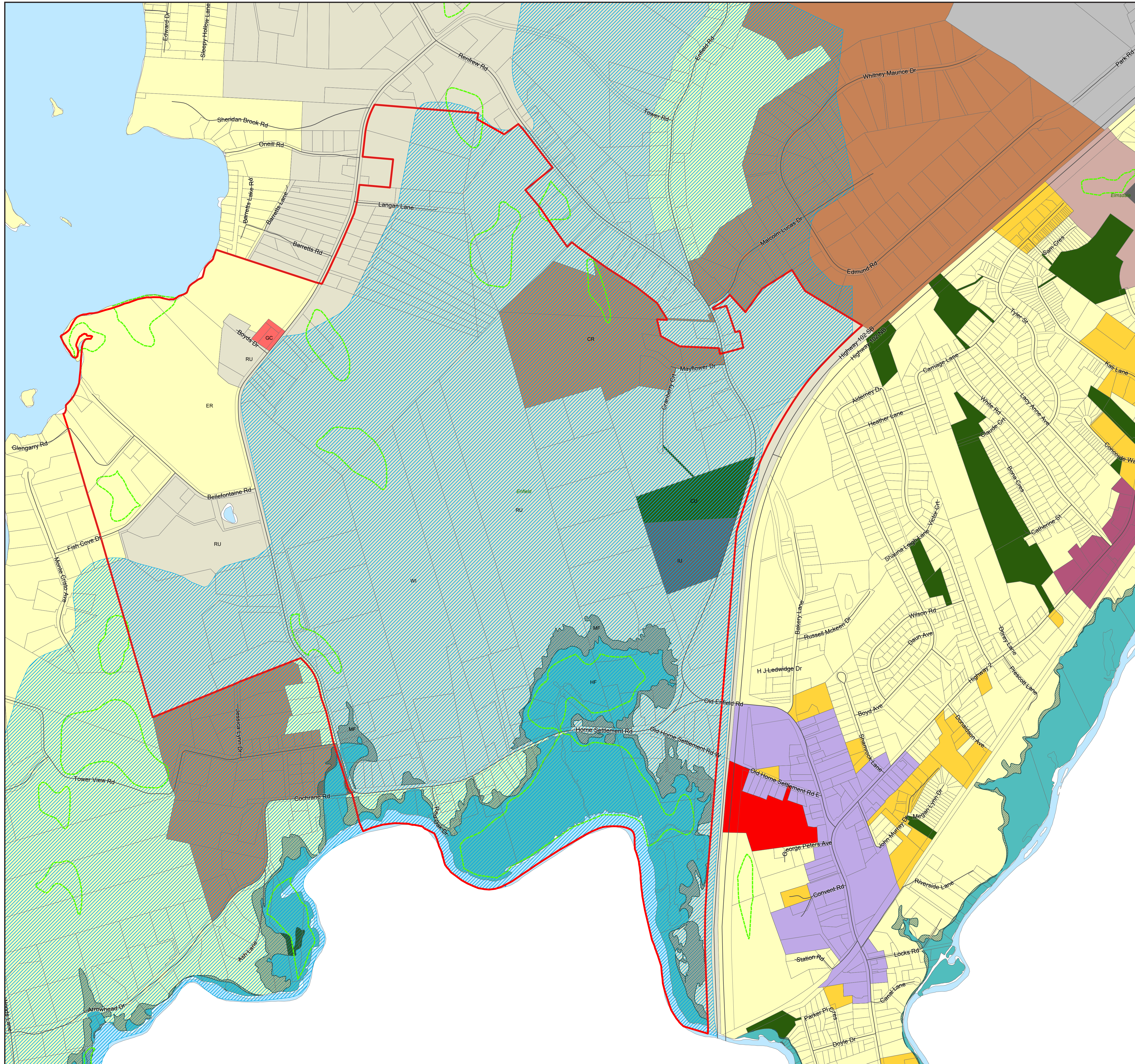


This map was produced by the Planning & Development Department and shall be used as a graphical representation of property boundaries. It is not intended to be used as a survey plan or for legal descriptions.





Approved on: July 27, 2023  
Amended on: January 24, 2024



RESIDENTIAL		COMMERCIAL	
	CR - Country Residential		GC - General Commercial
	LR - Lakeshore Residential		HC - Highway Commercial
	ER - Established Residential Neighbourhood		RC - Regional Commercial
	MR - Medium Density Residential Neighbourhood		BP - Business Park
	MH - Mini-Home		IC - Industrial Commercial
MIXED USE		RURAL	
	MC - Mixed Use Centre		AR - Agricultural Reserve
	VC - Village Core		RU - Rural Use
	WCDD - Walkable Comprehensive Development District		RU-2 - Rural Use North
	CU - Community Use		RCDD - Rural Comprehensive Development District
COMMUNITY USE		ENVIRONMENTAL	
	HF - High Risk Floodplain		MF - Moderate Risk Floodplain Overlay
	WS - Water Supply		WG - Watercourse Greenbelt
OTHER			WI - Water Intake Overlay
	IR-14 - Indian Brook 14		WP - Water Protection Overlay
	Growth Management Areas / Growth Reserve Areas		SAP-1 - Shubenacadie Aquifer Protection Overlay
	Potential Wetland		SAP-2 - Shubenacadie Aquifer Protection Overlay
			SAP-3 - Shubenacadie Aquifer Protection Overlay
			MGW - Milford Groundwater Overlay

1: 6,000

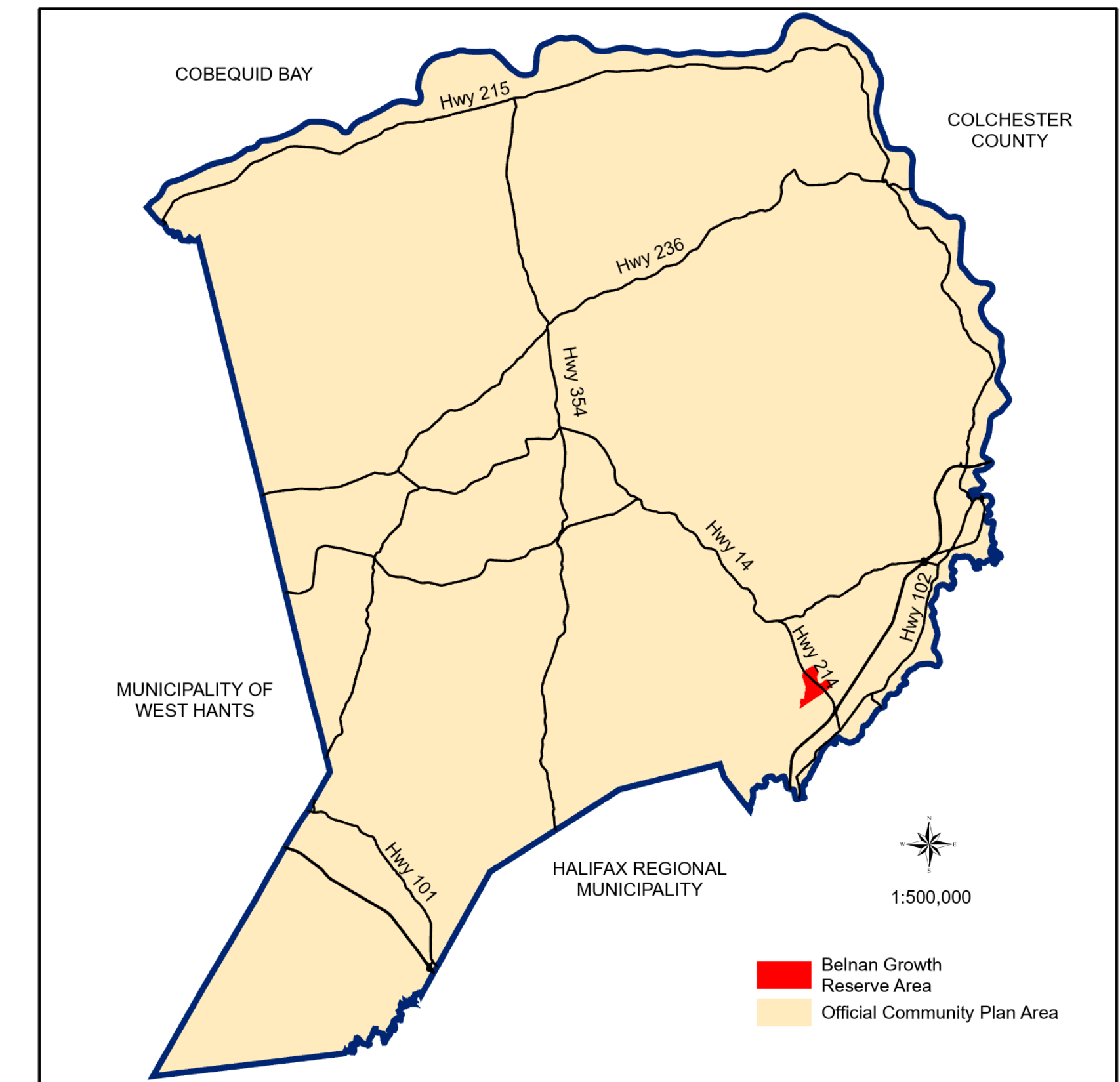
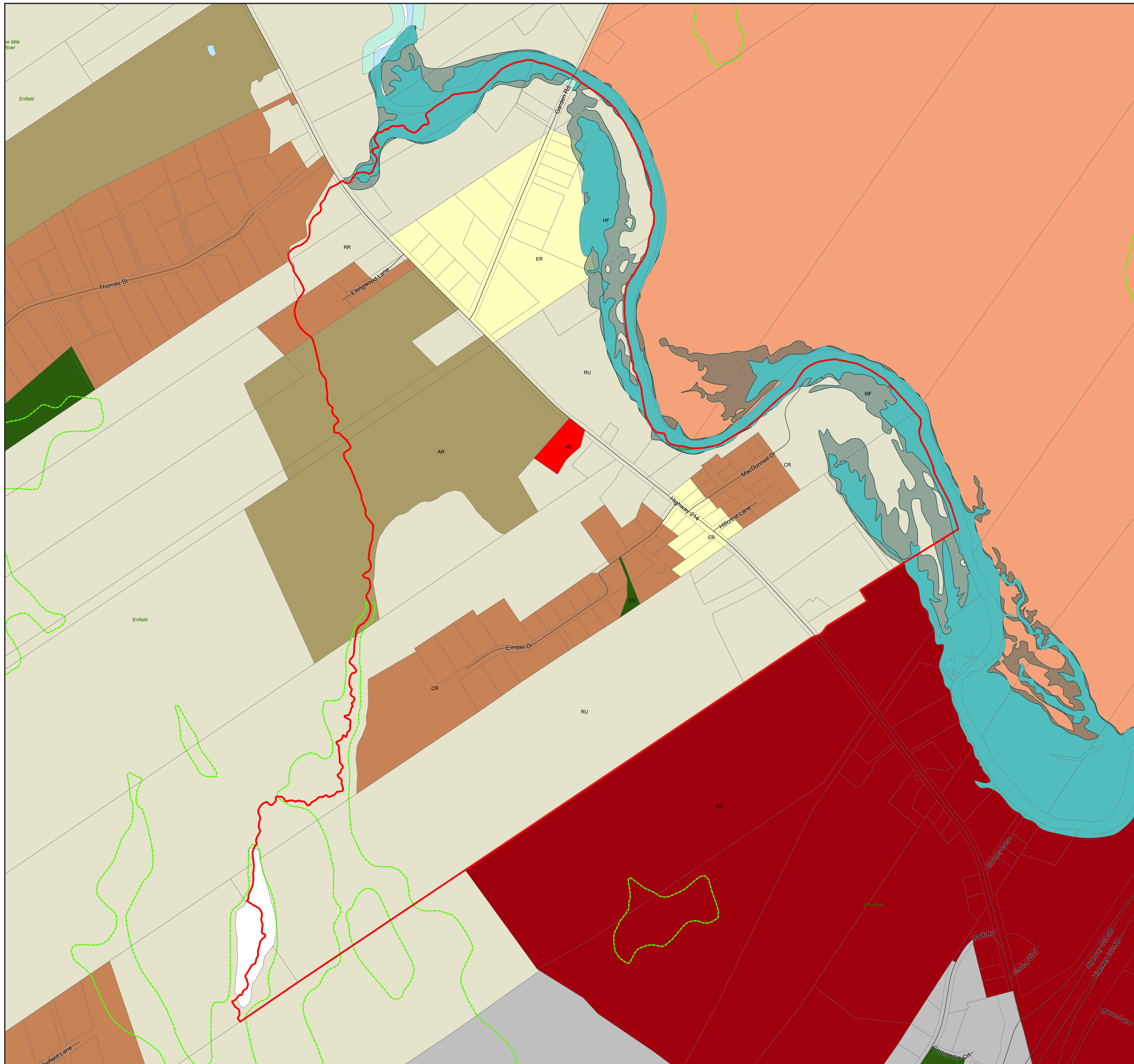


This map was produced by the Planning & Development Department and shall be used as a graphical representation of property boundaries. It is not intended to be used as a survey plan or for legal descriptions.





Approved on: July 27, 2023  
Amended on: November 26, 2025



RESIDENTIAL		COMMERCIAL	
	CR - Country Residential		GC - General Commercial
	LR - Lakeshore Residential		HC - Highway Commercial
	ER - Established Residential Neighbourhood		RC - Regional Commercial
	MR - Medium Density Residential Neighbourhood		BP - Business Park
	MH - Mini-Home		IC - Industrial Commercial
MIXED USE		RURAL	
	MC - Mixed Use Centre		AR - Agricultural Reserve
	VC - Village Core		RU - Rural Use
	WCDD - Walkable Comprehensive Development District		RU-2 - Rural Use North
	LCDD - Lantz Comprehensive Development District		RCDD - Rural Comprehensive Development District
COMMUNITY USE		ENVIRONMENTAL	
	CU - Community Use		HF - High Risk Floodplain
	IR-14 - Indian Brook 14		MF - Moderate Risk Floodplain Overlay
	Growth Management Areas / Growth Reserve Areas		WS - Water Supply
	Potential Wetland		WG - Watercourse Greenbelt
OTHER			WI - Water Intake Overlay
			WP - Water Protection Overlay
			SAP-1 - Shubenacadie Aquifer Protection Overlay
			SAP-2 - Shubenacadie Aquifer Protection Overlay
			SAP-3 - Shubenacadie Aquifer Protection Overlay
			MGW - Milford Groundwater Overlay

1: 4,500

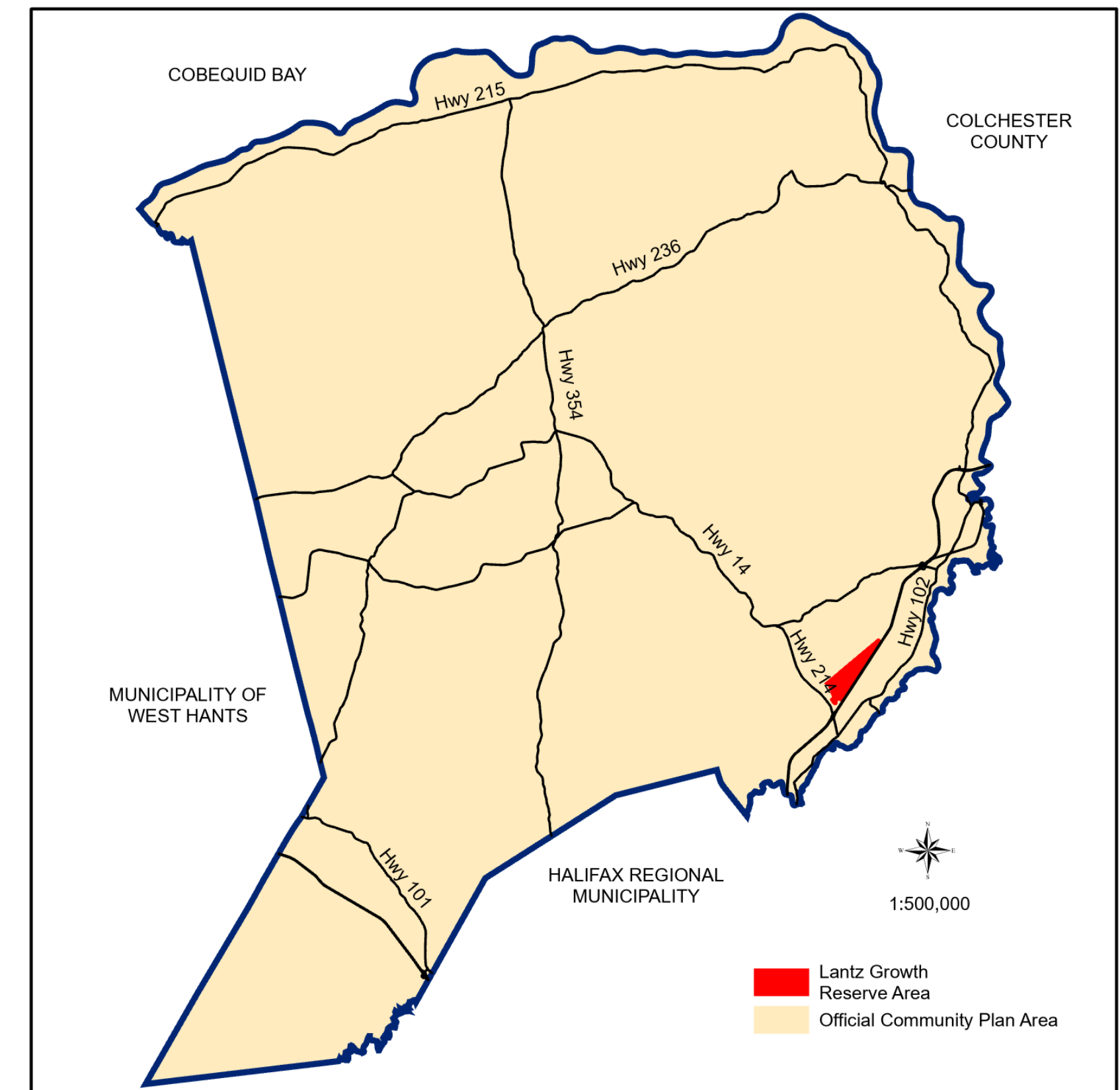
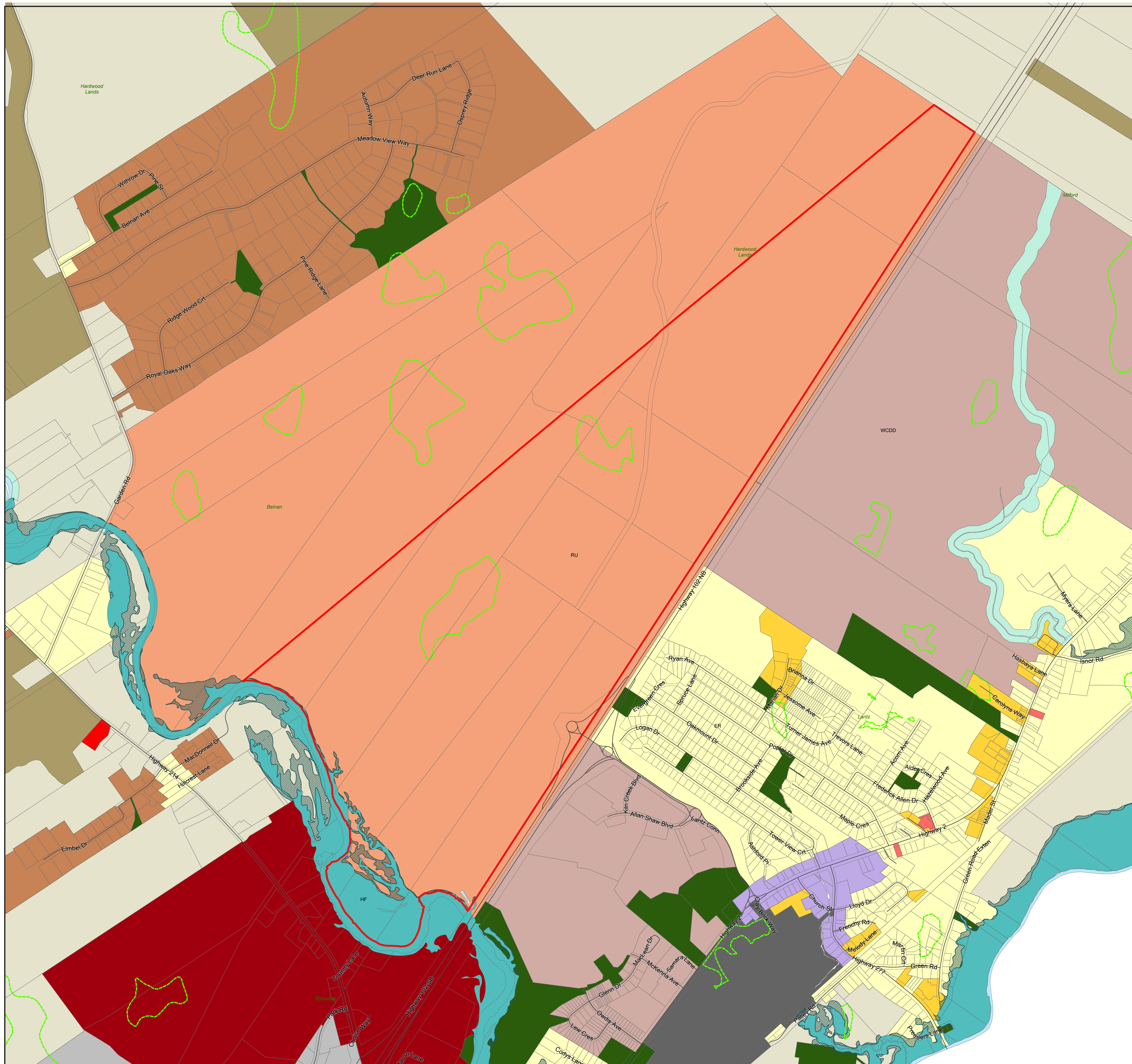


This map was produced by the Planning & Development Department and shall be used as a graphical representation of property boundaries. It is not intended to be used as a survey plan or for legal descriptions.

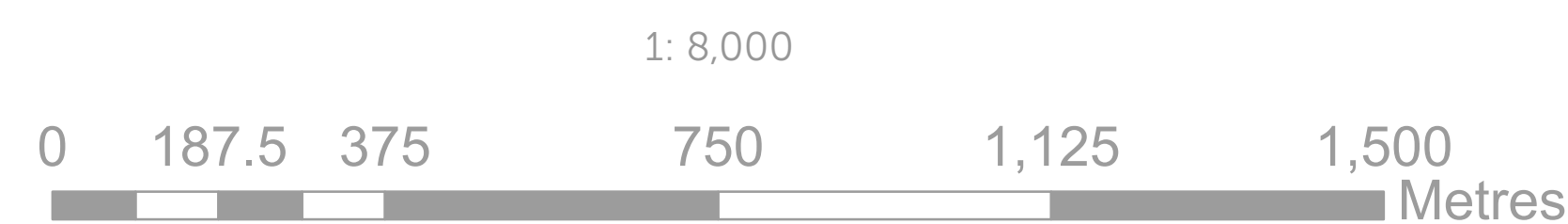




Approved on: July 27, 2023  
Amended on: January 24, 2024; November 26, 2025



RESIDENTIAL		COMMERCIAL	
	CR - Country Residential		GC - General Commercial
	LR - Lakeshore Residential		HC - Highway Commercial
	ER - Established Residential Neighbourhood		RC - Regional Commercial
	MR - Medium Density Residential Neighbourhood		BP - Business Park
	MH - Mini-Home		IC - Industrial Commercial
MIXED USE		RURAL	
	MC - Mixed Use Centre		AR - Agricultural Reserve
	VC - Village Core		RU - Rural Use
	WCCD - Walkable Comprehensive Development District		RU-2 - Rural Use North
	LCDD - Lantz Comprehensive Development District		RCDD - Rural Comprehensive Development District
COMMUNITY USE		ENVIRONMENTAL	
	CU - Community Use		HF - High Risk Floodplain
	IR-14 - Indian Brook 14		MF - Moderate Risk Floodplain Overlay
	Growth Management Areas / Growth Reserve Areas		WS - Water Supply
	Potential Wetland		WG - Watercourse Greenbelt
OTHER			WI - Water Intake Overlay
			WP - Water Protection Overlay
			SAP-1 - Shubenacadie Aquifer Protection Overlay
			SAP-2 - Shubenacadie Aquifer Protection Overlay
			SAP-3 - Shubenacadie Aquifer Protection Overlay
			MGW - Milford Groundwater Overlay

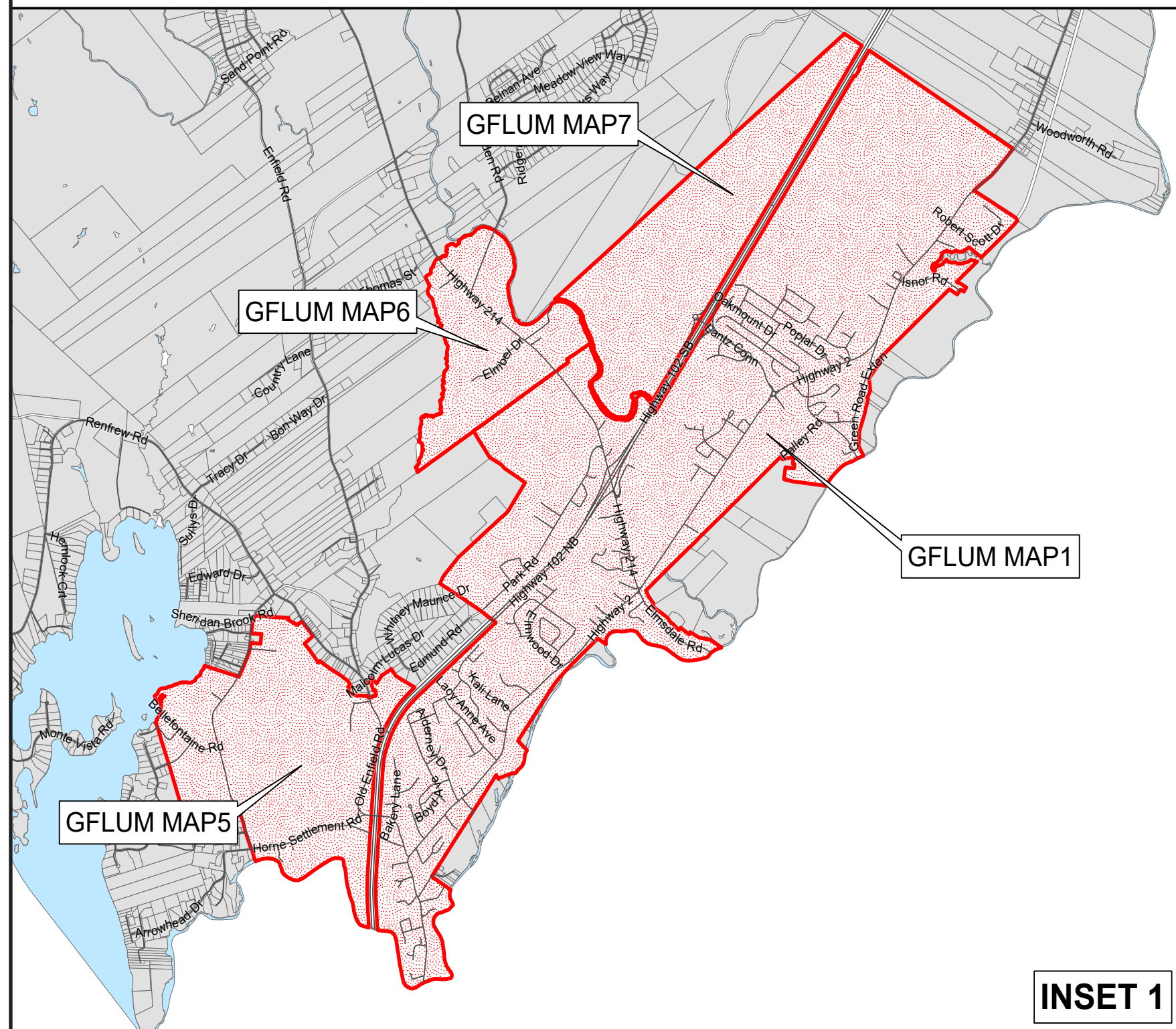
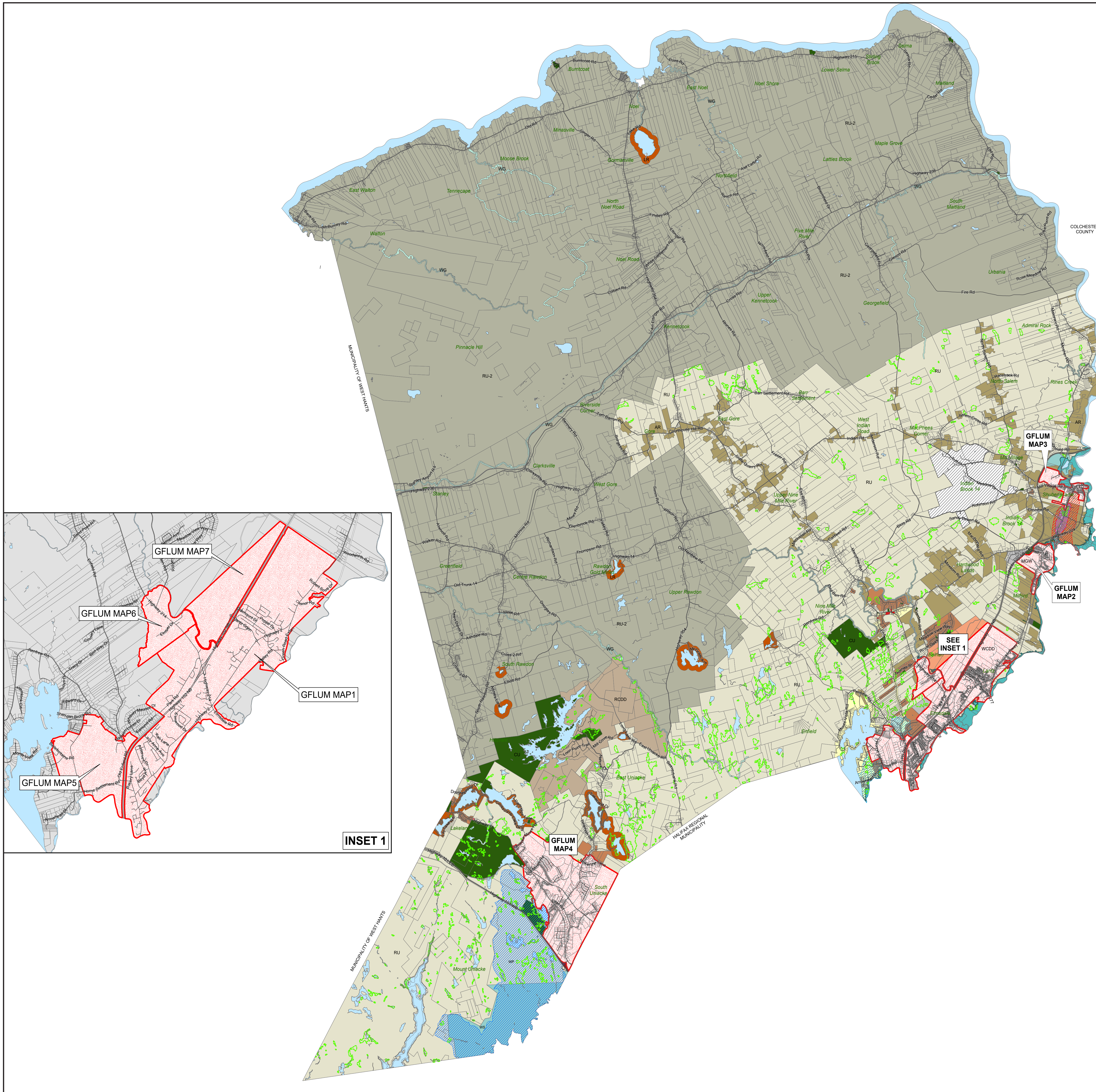


This map was produced by the Planning & Development Department and shall be used as a graphical representation of property boundaries. It is not intended to be used as a survey plan or for legal descriptions.

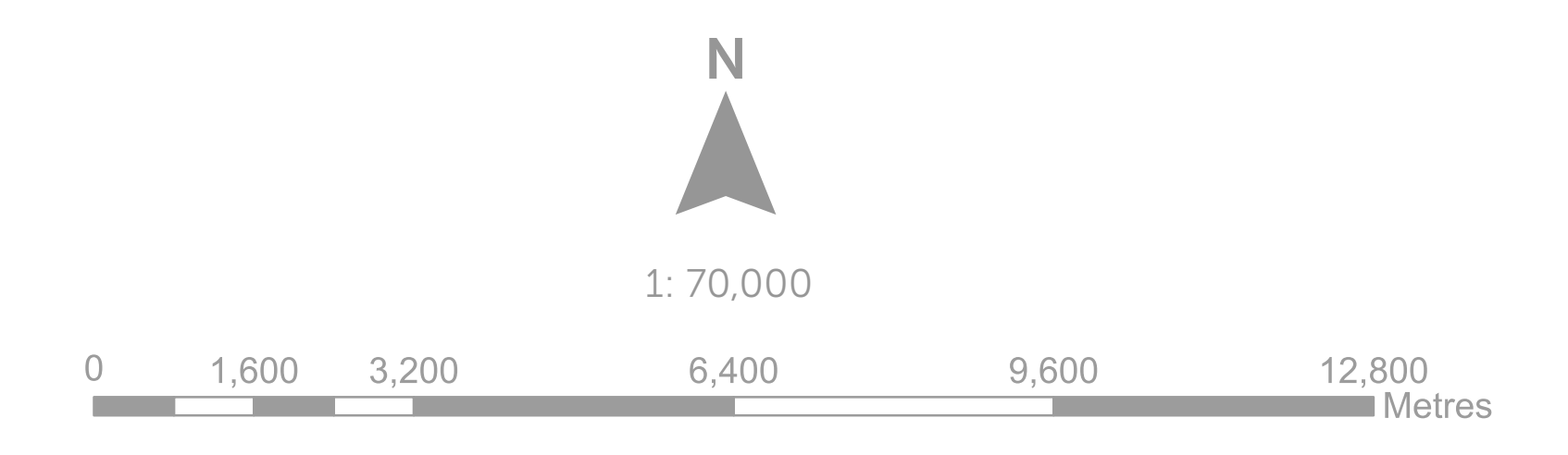




Approved on: July 27, 2023  
Amended on: September 27, 2023;  
September 25, 2024; March 26, 2025;  
November 26, 2025; April 22, 2026



RESIDENTIAL		COMMERCIAL	
	CR - Country Residential		GC - General Commercial
	LR - Lakeshore Residential		HC - Highway Commercial
	ER - Established Residential Neighbourhood		RC - Regional Commercial
	MR - Medium Density Residential Neighbourhood		BP - Business Park
	MH - Mini-Home		IC - Industrial Commercial
MIXED USE		RURAL	
	MC - Mixed Use Centre		AR - Agricultural Reserve
	VC - Village Core		RU - Rural Use
	WCDD - Walkable Comprehensive Development District		RU-2 - Rural Use North
	LCDD - Lantz Comprehensive Development District		RCDD - Rural Comprehensive Development District
COMMUNITY USE		ENVIRONMENTAL	
	CU - Community Use		HF - High Risk Floodplain
	IR-14 - Indian Brook 14		MF - Moderate Risk Floodplain Overlay
	Growth Management Areas / Growth Reserve Areas		WS - Water Supply
	Potential Wetland		WG - Watercourse Greenbelt
			WI - Water Intake Overlay
			WP - Water Protection Overlay
			SAP-1 - Shubenacadie Aquifer Protection Overlay
			SAP-2 - Shubenacadie Aquifer Protection Overlay
			SAP-3 - Shubenacadie Aquifer Protection Overlay
			MGW - Milford Groundwater Overlay



This map was produced by the Planning & Development Department and shall be used as a graphical representation of property boundaries. It is not intended to be used as a survey plan or for legal descriptions.