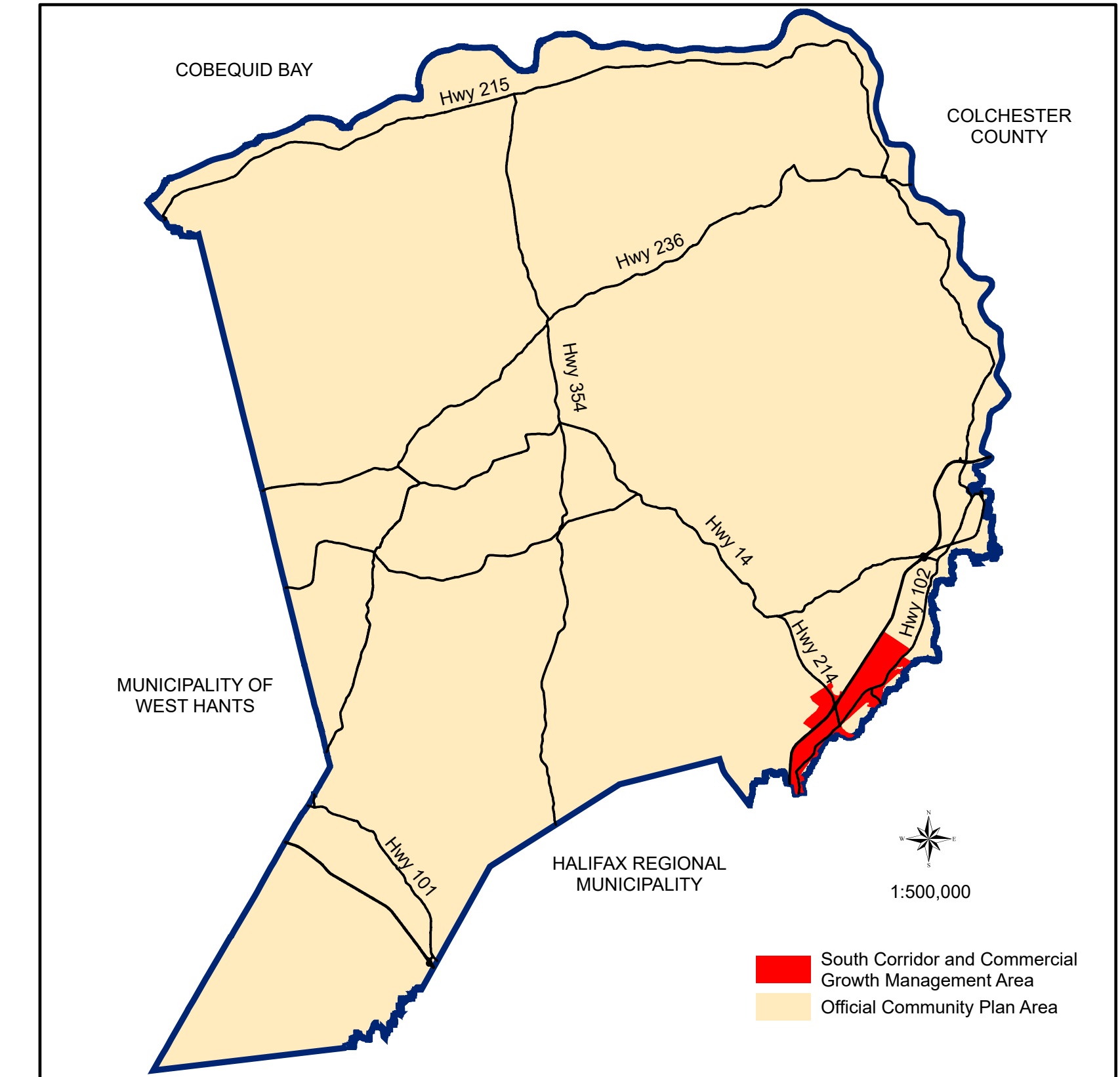


Approved on: July 27, 2023  
Amended on:



RESIDENTIAL		COMMERCIAL	
	CR - Country Residential		GC - General Commercial
	LR - Lakeshore Residential		HC - Highway Commercial
	R1 - Established Residential Neighbourhood		RC - Regional Commercial
	R2 - Two Dwelling Unit Residential		BP - Business Park
	MH - Mini-Home		IC - Industrial Commercial
MIXED USE		RURAL	
	R2-T - Townhouse		AR - Agricultural Reserve
	R3 - Multiple Unit Dwelling		RU - Rural Use
	MC - Mixed Use Centre		RU-2 - Rural Use North
	VC - Village Core		RCDD - Rural Comprehensive Development District
	WCCDD - Walkable Comprehensive Development District		
COMMUNITY USE		ENVIRONMENTAL	
	IU - Institutional Use		HF - High Risk Floodplain
	OS - Open Space		MF - Moderate Risk Floodplain Overlay
			WG - Watercourse Greenbelt
OTHER			WS - Water Supply
	IR-14 - Indian Brook 14		WI - Water Intake Overlay
	Growth Management Areas / Growth Reserve Areas		WP - Water Protection Overlay
			SAP-1 - Shubenacadie Aquifer Protection Overlay
			SAP-2 - Shubenacadie Aquifer Protection Overlay
			SAP-3 - Shubenacadie Aquifer Protection Overlay
			MGW - Milford Groundwater Overlay

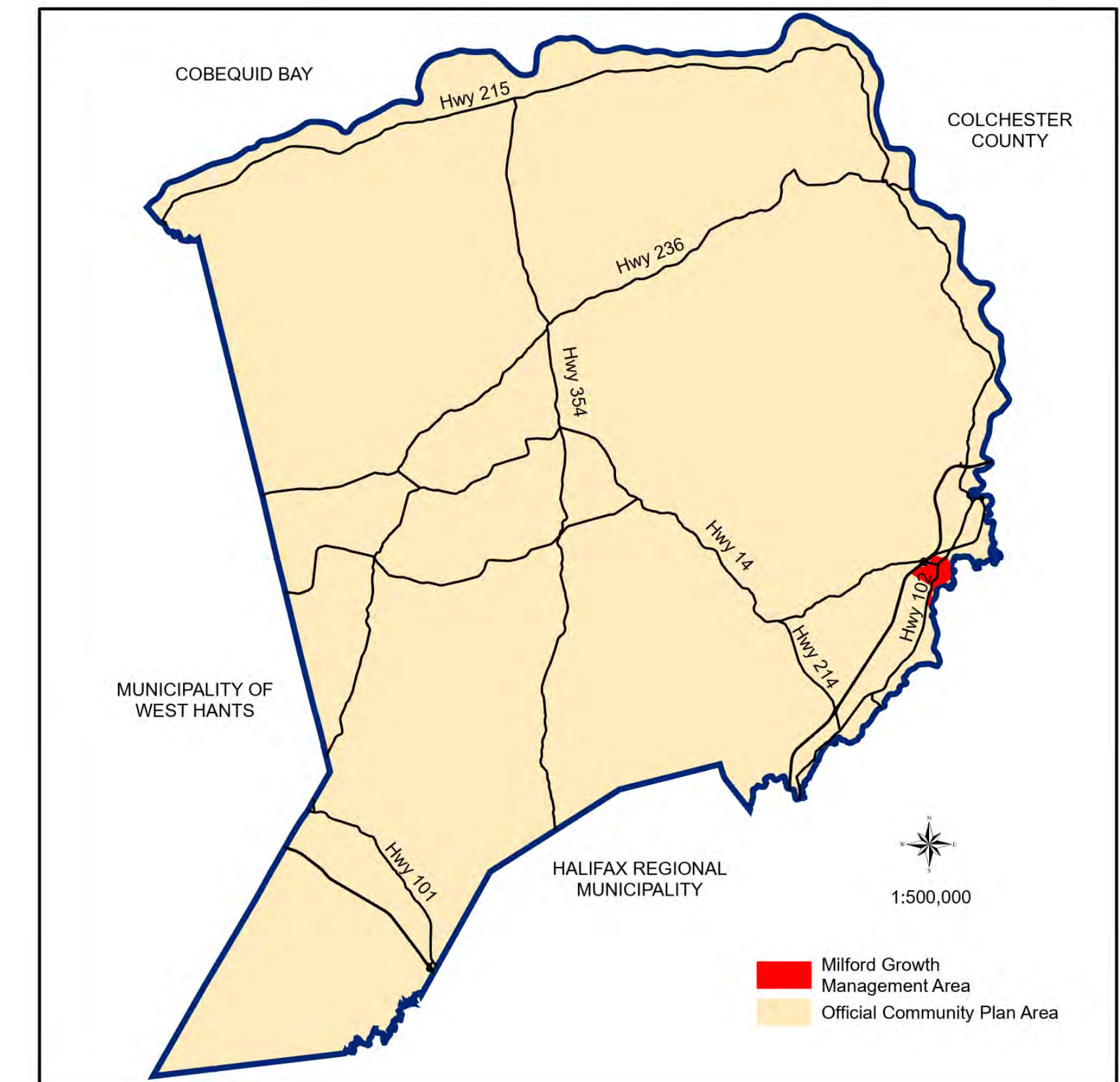
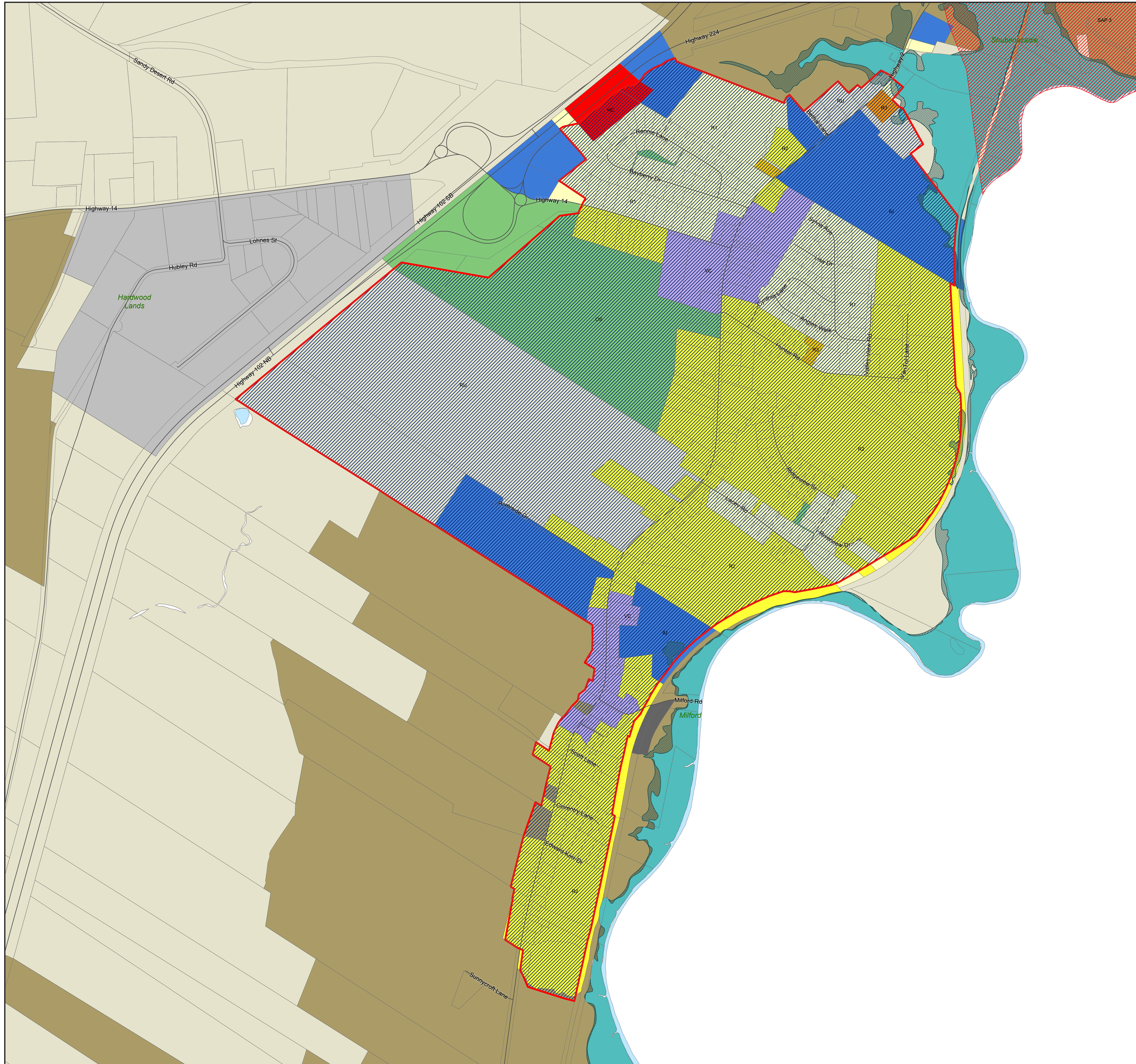
1:16,000



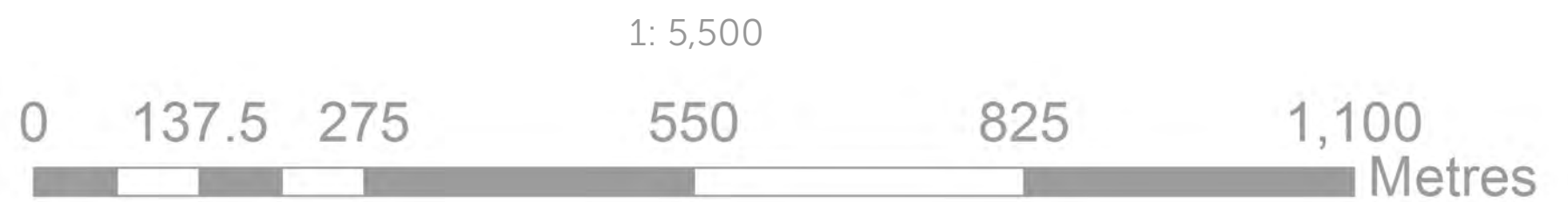
This map was produced by the Planning & Development Department and shall be used as a graphical representation of property boundaries. It is not intended to be used as a survey plan or for legal descriptions.



Approved on: July 27, 2023  
Amended on:



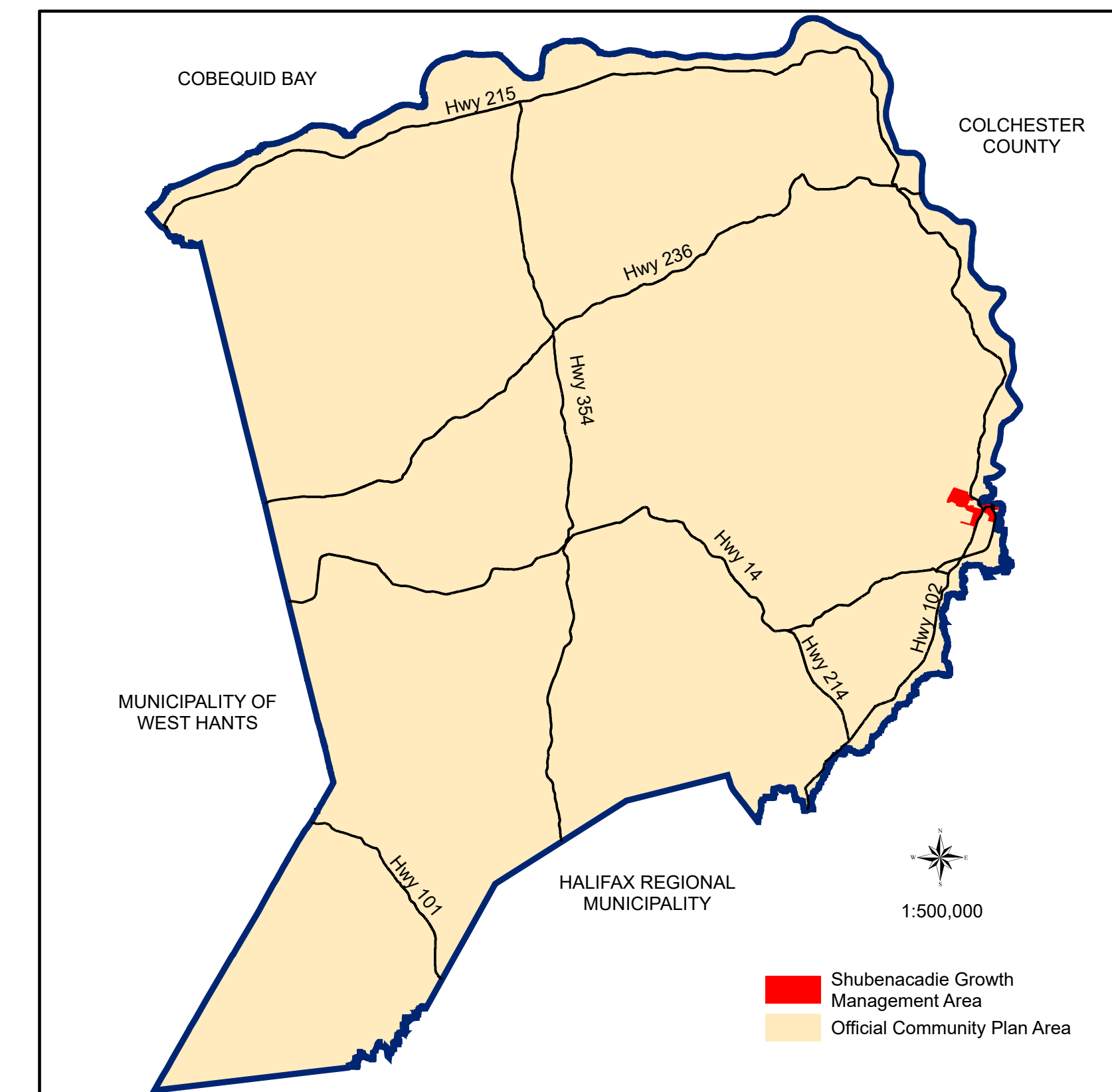
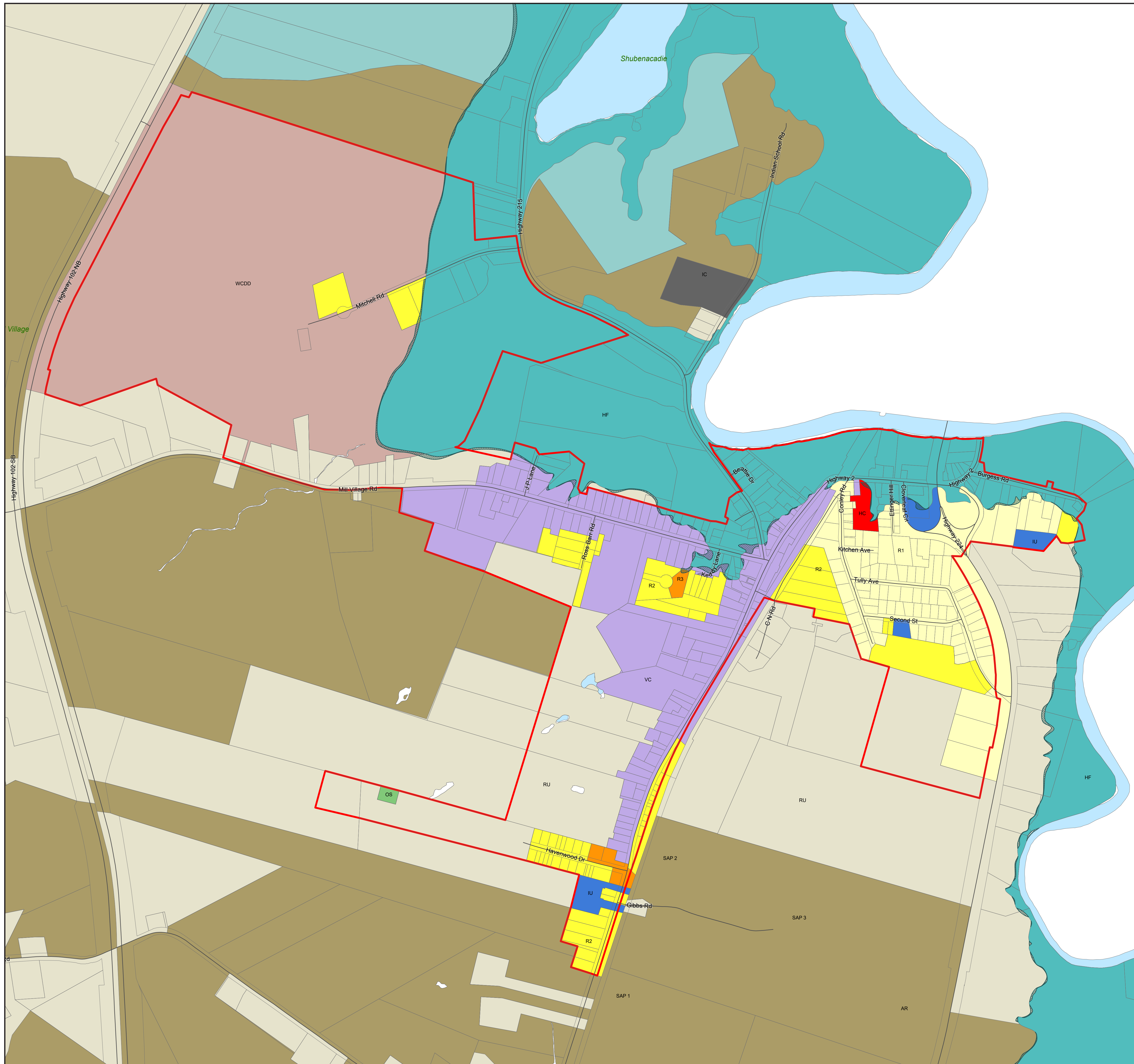
RESIDENTIAL		COMMERCIAL	
	CR - Country Residential		GC - General Commercial
	LR - Lakeshore Residential		HC - Highway Commercial
	R1 - Established Residential Neighbourhood		RC - Regional Commercial
	R2 - Two Dwelling Unit Residential		BP - Business Park
	MH - Mini-Home		IC - Industrial Commercial
MIXED USE		RURAL	
	R2-T - Townhouse		AR - Agricultural Reserve
	R3 - Multiple Unit Dwelling		RU - Rural Use
	MC - Mixed Use Centre		RU-2 - Rural Use North
	VC - Village Core		RCDD - Rural Comprehensive Development District
	WCDD - Walkable Comprehensive Development District		
COMMUNITY USE		ENVIRONMENTAL	
	IU - Institutional Use		HF - High Risk Floodplain
	OS - Open Space		MF - Moderate Risk Floodplain Overlay
			WG - Watercourse Greenbelt
OTHER			WS - Water Supply
	IR-14 - Indian Brook 14		WI - Water Intake Overlay
	Growth Management Areas / Growth Reserve Areas		WP - Water Protection Overlay
			SAP-1 - Shubenacadie Aquifer Protection Overlay
			SAP-2 - Shubenacadie Aquifer Protection Overlay
			SAP-3 - Shubenacadie Aquifer Protection Overlay
			MGW - Milford Groundwater Overlay



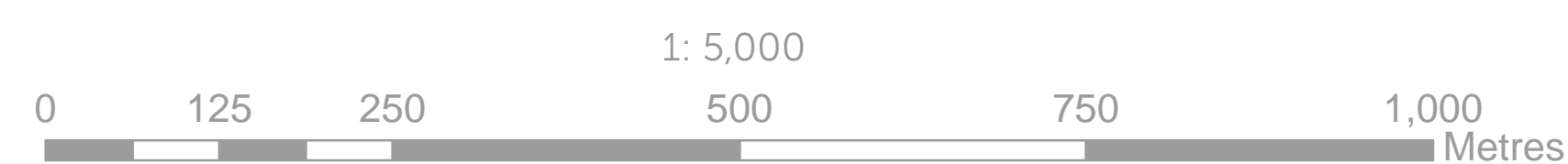
This map was produced by the Planning & Development Department and shall be used as a graphical representation of property boundaries. It is not intended to be used as a survey plan or for legal descriptions.



Approved on: July 27, 2023  
Amended on: September 27, 2023



RESIDENTIAL		COMMERCIAL	
	CR - Country Residential		GC - General Commercial
	LR - Lakeshore Residential		HC - Highway Commercial
	R1 - Established Residential Neighbourhood		RC - Regional Commercial
	R2 - Two Dwelling Unit Residential		BP - Business Park
	MH - Mini-Home		IC - Industrial Commercial
MIXED USE		RURAL	
	R2-T - Townhouse		AR - Agricultural Reserve
	R3 - Multiple Unit Dwelling		RU - Rural Use
	MC - Mixed Use Centre		RU-2 - Rural Use North
	VC - Village Core		RCDD - Rural Comprehensive Development District
	WCCD - Walkable Comprehensive Development District		
COMMUNITY USE		ENVIRONMENTAL	
	IU - Institutional Use		HF - High Risk Floodplain
	OS - Open Space		MF - Moderate Risk Floodplain Overlay
			WG - Watercourse Greenbelt
OTHER			WS - Water Supply
	IR-14 - Indian Brook 14		WI - Water Intake Overlay
	Growth Management Areas / Growth Reserve Areas		WP - Water Protection Overlay
			SAP-1 - Shubenacadie Aquifer Protection Overlay
			SAP-2 - Shubenacadie Aquifer Protection Overlay
			SAP-3 - Shubenacadie Aquifer Protection Overlay
			MGW - Milford Groundwater Overlay

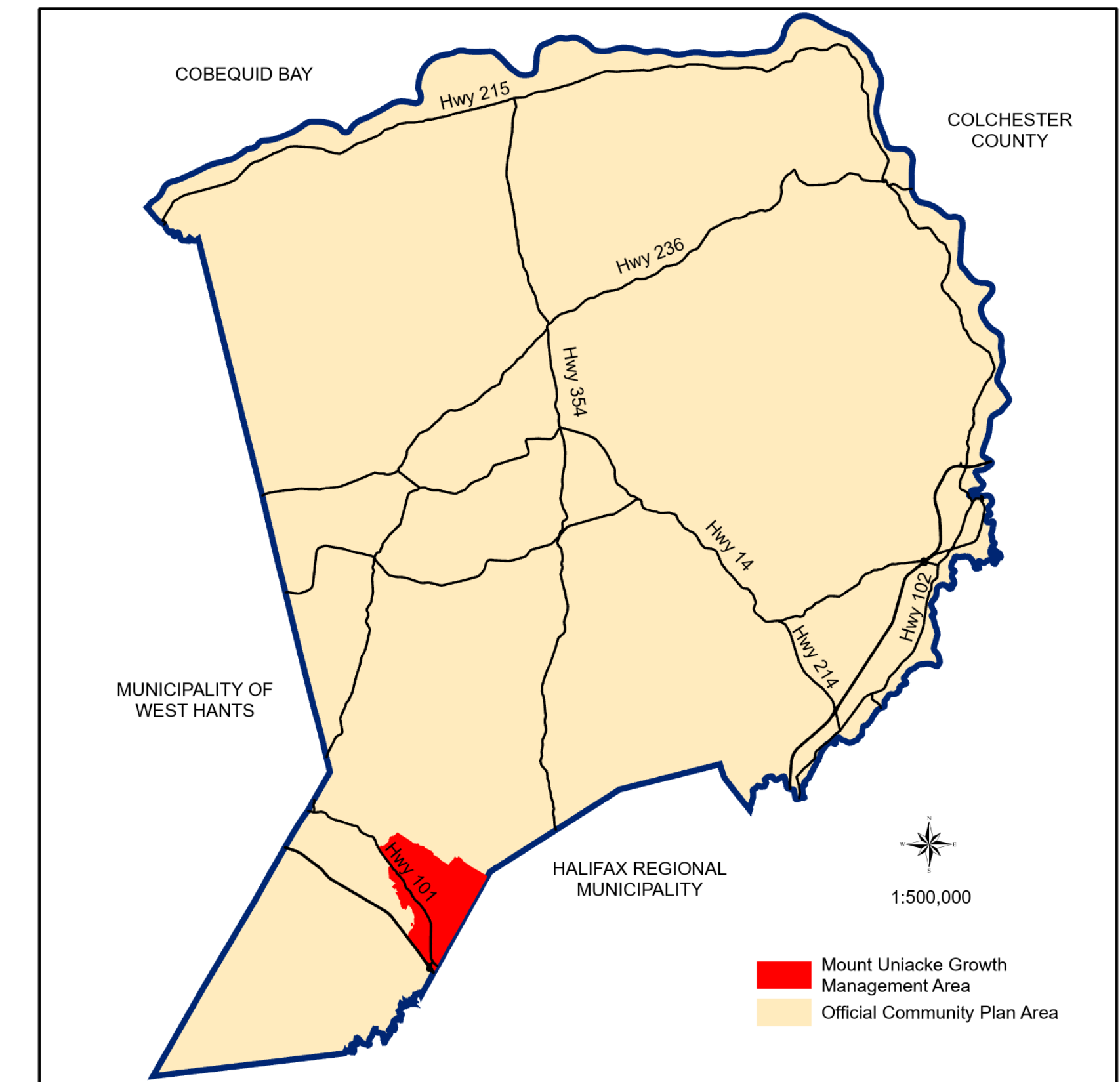
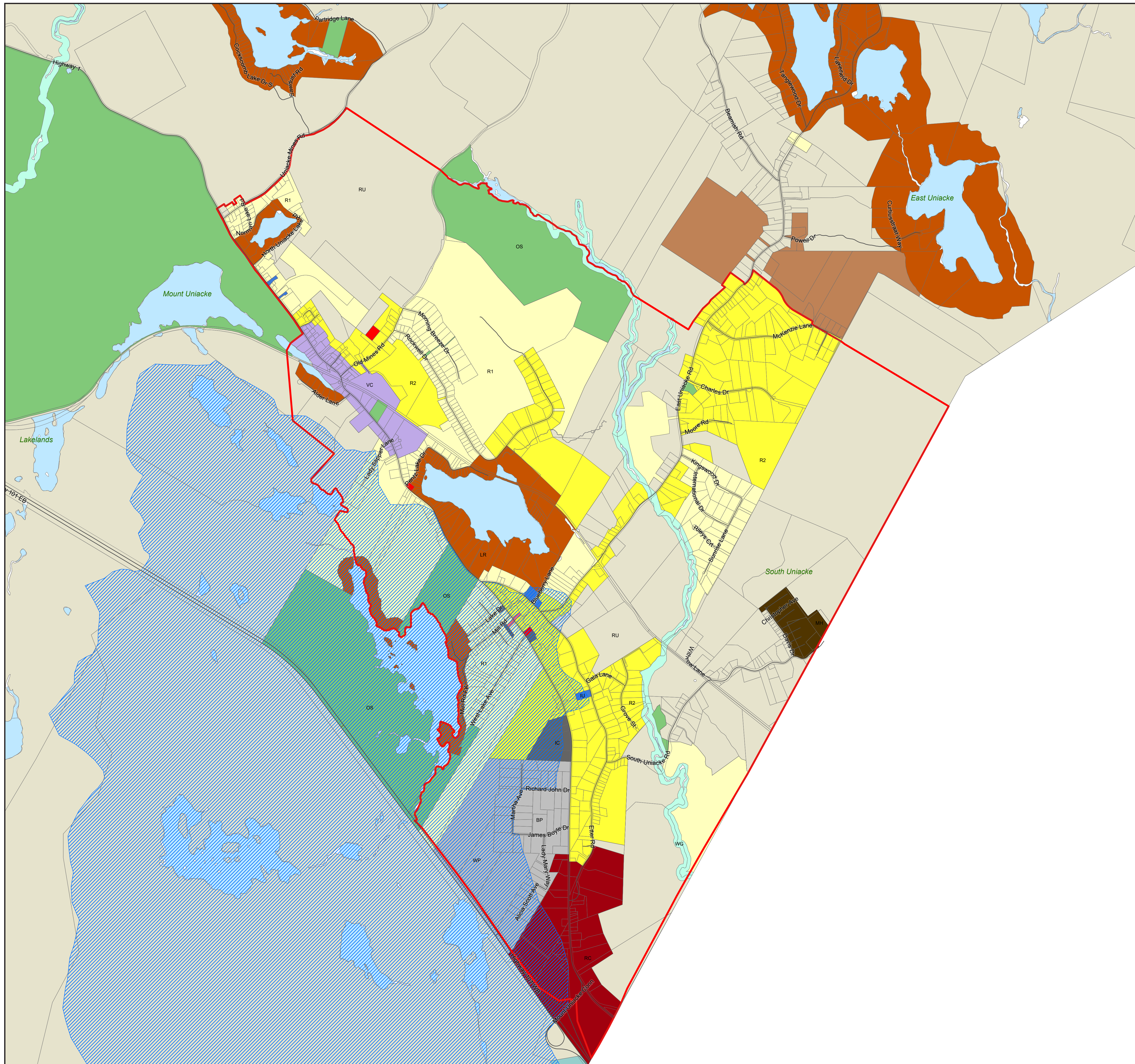


This map was produced by the Planning & Development Department and shall be used as a graphical representation of property boundaries. It is not intended to be used as a survey plan or for legal descriptions.





Approved on: July 27, 2023  
Amended on: November 29, 2023



RESIDENTIAL		COMMERCIAL	
	CR - Country Residential		GC - General Commercial
	LR - Lakeshore Residential		HC - Highway Commercial
	R1 - Established Residential Neighbourhood		RC - Regional Commercial
	R2 - Two Dwelling Unit Residential		BP - Business Park
	MH - Mini-Home		IC - Industrial Commercial
MIXED USE		RURAL	
	R2-T - Townhouse		AR - Agricultural Reserve
	R3 - Multiple Unit Dwelling		RU - Rural Use
	MC - Mixed Use Centre		RU-2 - Rural Use North
	VC - Village Core		RCDD - Rural Comprehensive Development District
	WCDD - Walkable Comprehensive Development District		
COMMUNITY USE		ENVIRONMENTAL	
	IU - Institutional Use		HF - High Risk Floodplain
	OS - Open Space		MF - Moderate Risk Floodplain Overlay
OTHER			WG - Watercourse Greenbelt
	IR-14 - Indian Brook 14		WS - Water Supply
	Growth Management Areas / Growth Reserve Areas		WI - Water Intake Overlay
			WP - Water Protection Overlay
			SAP-1 - Shubenacadie Aquifer Protection Overlay
			SAP-2 - Shubenacadie Aquifer Protection Overlay
			SAP-3 - Shubenacadie Aquifer Protection Overlay
			MGW - Milford Groundwater Overlay

1: 15,000

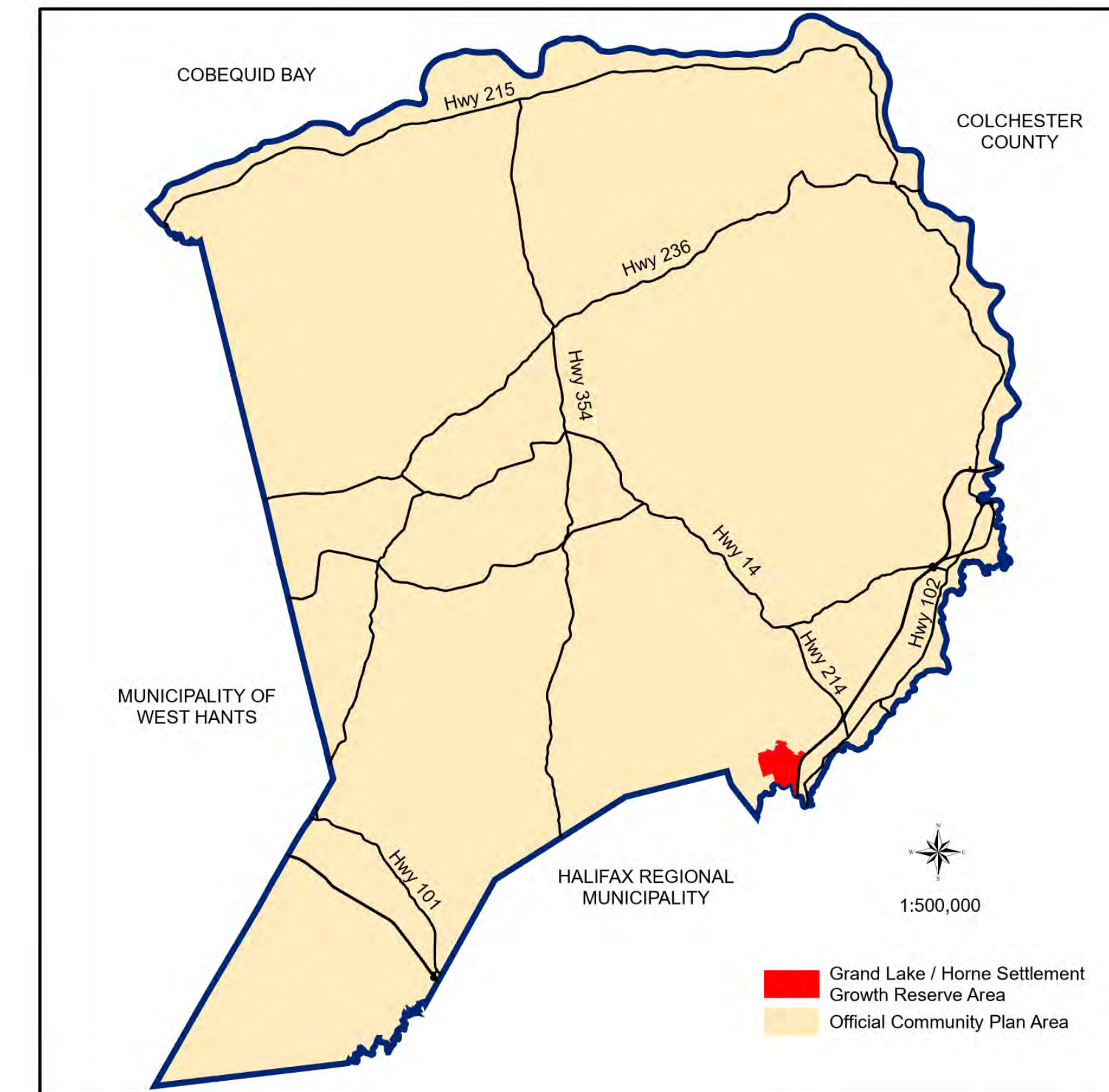
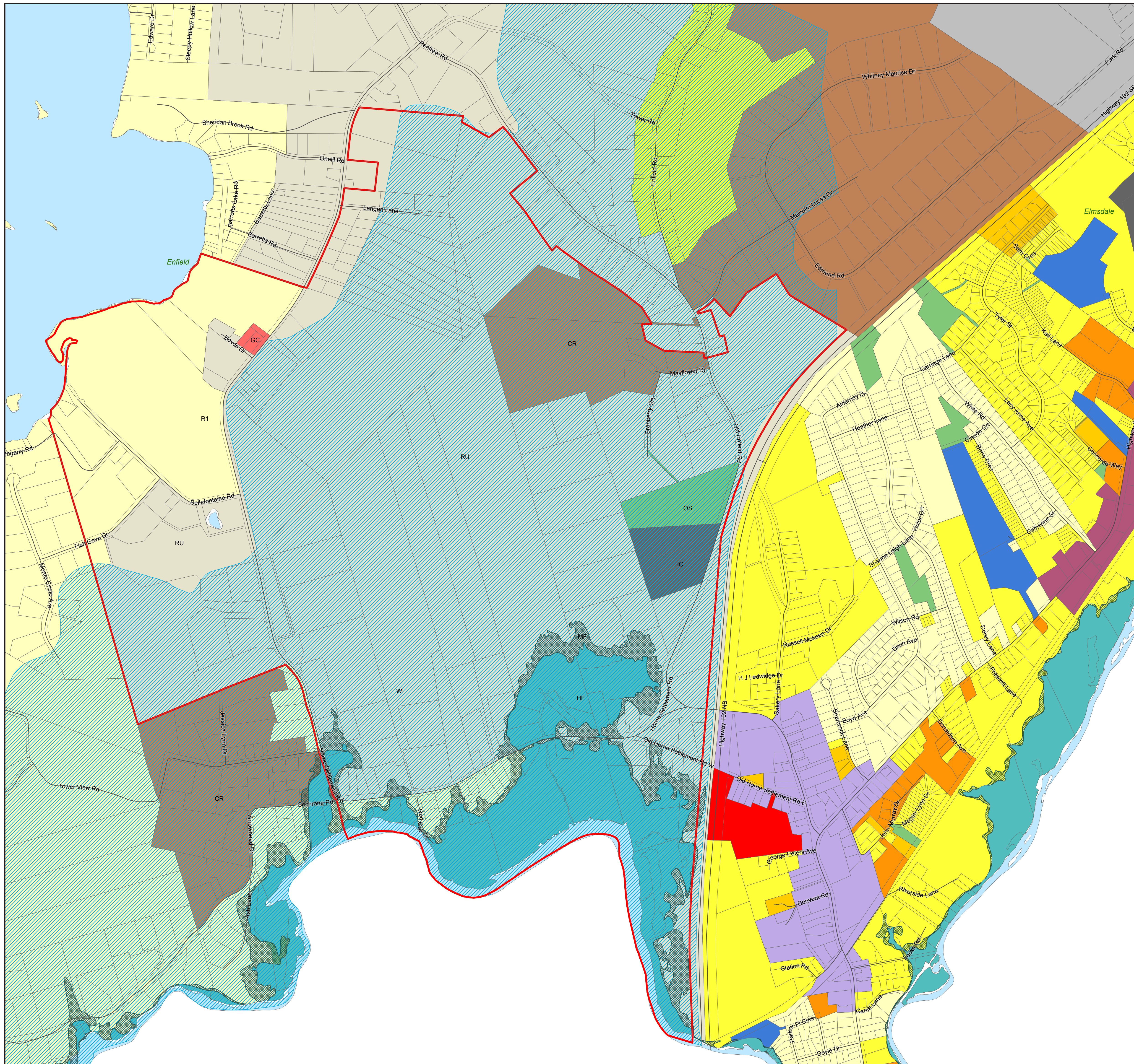


This map was produced by the Planning & Development Department and shall be used as a graphical representation of property boundaries. It is not intended to be used as a survey plan or for legal descriptions.





Approved on: July 27, 2023  
Amended on:



RESIDENTIAL		COMMERCIAL	
CR - Country Residential	GC - General Commercial	HC - Highway Commercial	RC - Regional Commercial
LR - Lakeshore Residential		BP - Business Park	
R1 - Established Residential Neighbourhood		IC - Industrial Commercial	
R2 - Two Dwelling Unit Residential			
MH - Mini-Home			
MIXED USE		RURAL	
R2-T - Townhouse	AR - Agricultural Reserve	RU - Rural Use	
R3 - Multiple Unit Dwelling		RU-2 - Rural Use North	
MC - Mixed Use Centre		RCDD - Rural Comprehensive Development District	
VC - Village Core			
WCDD - Walkable Comprehensive Development District			
COMMUNITY USE		ENVIRONMENTAL	
IU - Institutional Use	HF - High Risk Floodplain	MF - Moderate Risk Floodplain Overlay	WG - Watercourse Greenbelt
OS - Open Space		WS - Water Supply	
OTHER		WI - Water Intake Overlay	WP - Water Protection Overlay
IR-14 - Indian Brook 14		SAP-1 - Shubenacadie Aquifer Protection Overlay	SAP-2 - Shubenacadie Aquifer Protection Overlay
Growth Management Areas / Growth Reserve Areas		SAP-3 - Shubenacadie Aquifer Protection Overlay	MGW - Milford Groundwater Overlay

1: 6,000

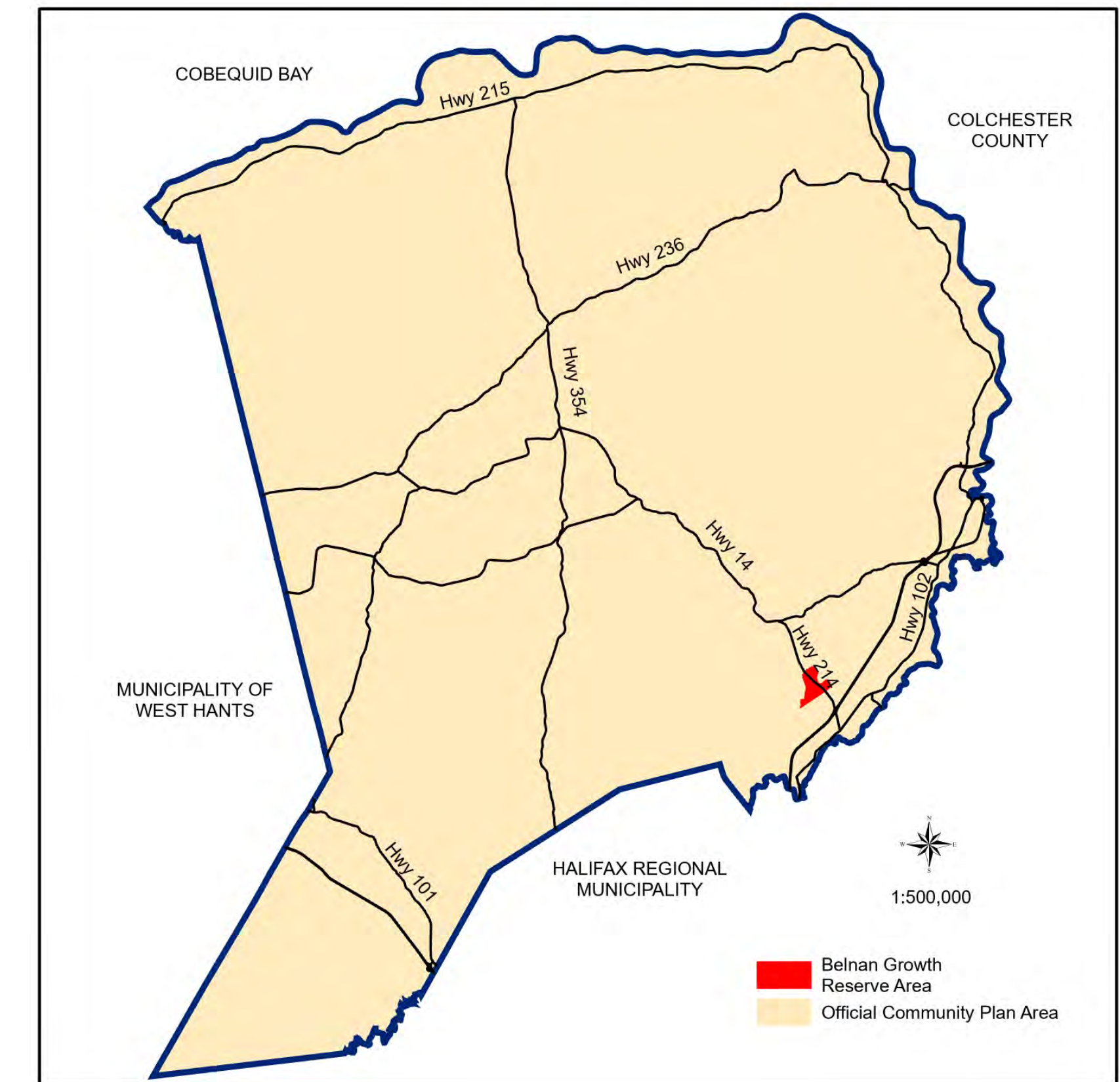
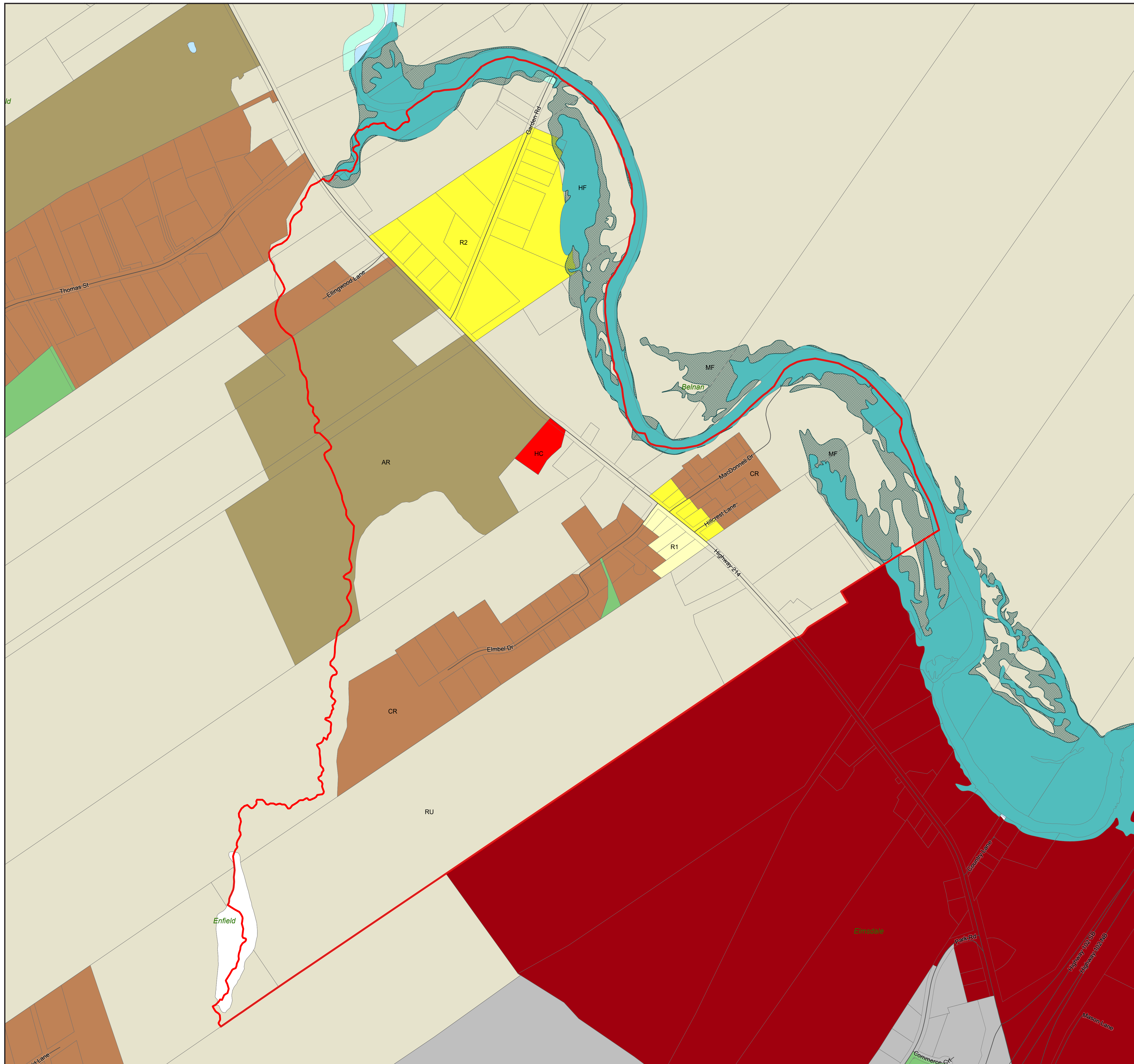


This map was produced by the Planning & Development Department and shall be used as a graphical representation of property boundaries. It is not intended to be used as a survey plan or for legal descriptions.





Approved on: July 27, 2023  
Amended on:



RESIDENTIAL		COMMERCIAL	
	CR - Country Residential		GC - General Commercial
	LR - Lakeshore Residential		HC - Highway Commercial
	R1 - Established Residential Neighbourhood		RC - Regional Commercial
	R2 - Two Dwelling Unit Residential		BP - Business Park
	MH - Mini-Home		IC - Industrial Commercial
MIXED USE		RURAL	
	R2-T - Townhouse		AR - Agricultural Reserve
	R3 - Multiple Unit Dwelling		RU - Rural Use
	MC - Mixed Use Centre		RU-2 - Rural Use North
	VC - Village Core		RCDD - Rural Comprehensive Development District
	WCDD - Walkable Comprehensive Development District		
COMMUNITY USE		ENVIRONMENTAL	
	IU - Institutional Use		HF - High Risk Floodplain
	OS - Open Space		MF - Moderate Risk Floodplain Overlay
OTHER			WG - Watercourse Greenbelt
	IR-14 - Indian Brook 14		WS - Water Supply
	Growth Management Areas / Growth Reserve Areas		WI - Water Intake Overlay
			WP - Water Protection Overlay
			SAP-1 - Shubenacadie Aquifer Protection Overlay
			SAP-2 - Shubenacadie Aquifer Protection Overlay
			SAP-3 - Shubenacadie Aquifer Protection Overlay
			MGW - Milford Groundwater Overlay

1: 4,500

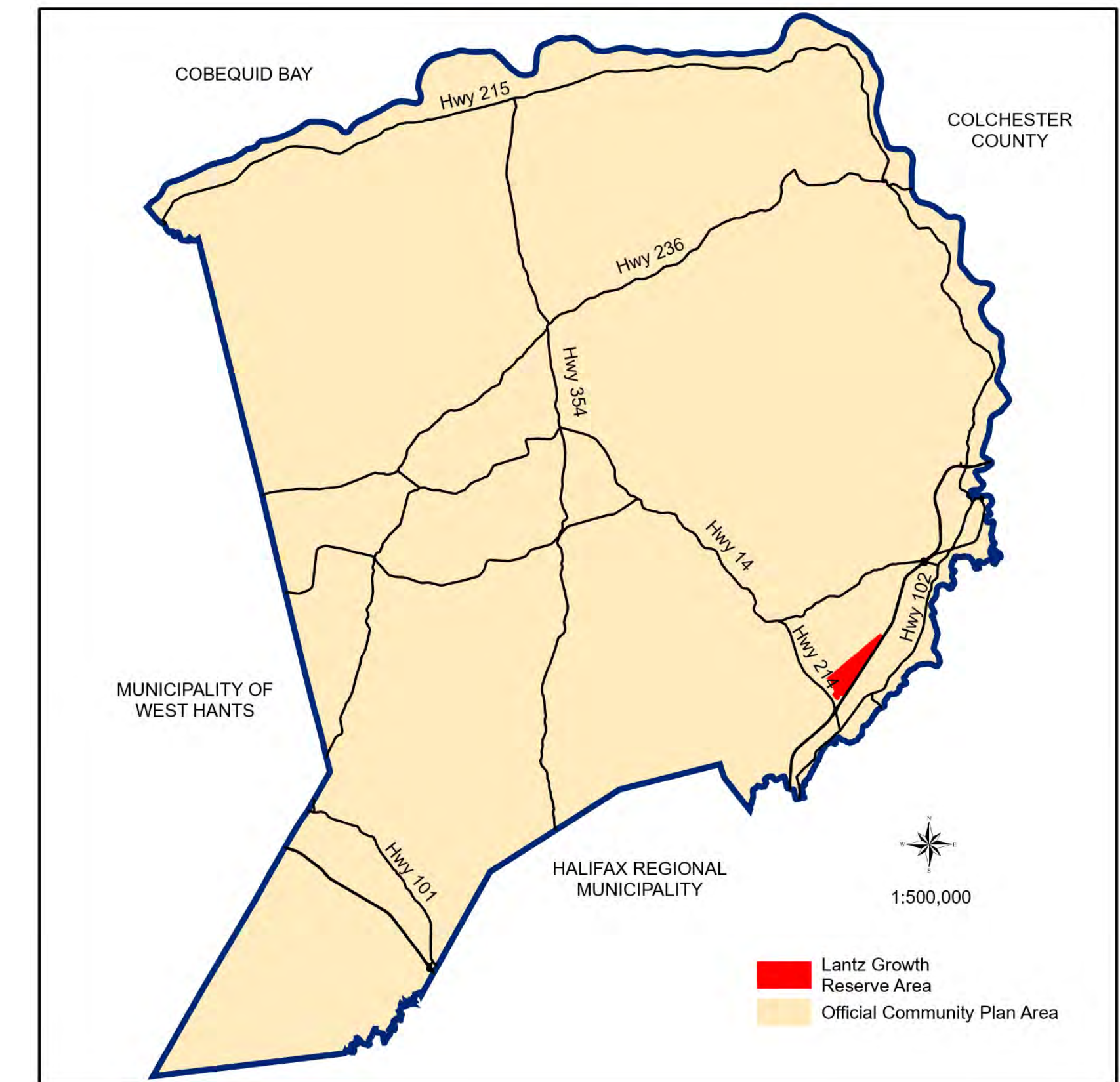


This map was produced by the Planning & Development Department and shall be used as a graphical representation of property boundaries. It is not intended to be used as a survey plan or for legal descriptions.





Approved on: July 27, 2023  
Amended on:



RESIDENTIAL		COMMERCIAL	
	CR - Country Residential		GC - General Commercial
	LR - Lakeshore Residential		HC - Highway Commercial
	R1 - Established Residential Neighbourhood		RC - Regional Commercial
	R2 - Two Dwelling Unit Residential		BP - Business Park
	MH - Mini-Home		IC - Industrial Commercial
MIXED USE		RURAL	
	R2-T - Townhouse		AR - Agricultural Reserve
	R3 - Multiple Unit Dwelling		RU - Rural Use
	MC - Mixed Use Centre		RU-2 - Rural Use North
	VC - Village Core		RCDD - Rural Comprehensive Development District
	WCDD - Walkable Comprehensive Development District		
COMMUNITY USE		ENVIRONMENTAL	
	IU - Institutional Use		HF - High Risk Floodplain
	OS - Open Space		MF - Moderate Risk Floodplain Overlay
OTHER			WG - Watercourse Greenbelt
	IR-14 - Indian Brook 14		WS - Water Supply
	Growth Management Areas / Growth Reserve Areas		WI - Water Intake Overlay
			WP - Water Protection Overlay
			SAP-1 - Shubenacadie Aquifer Protection Overlay
			SAP-2 - Shubenacadie Aquifer Protection Overlay
			SAP-3 - Shubenacadie Aquifer Protection Overlay
			MGW - Milford Groundwater Overlay

1: 8,000

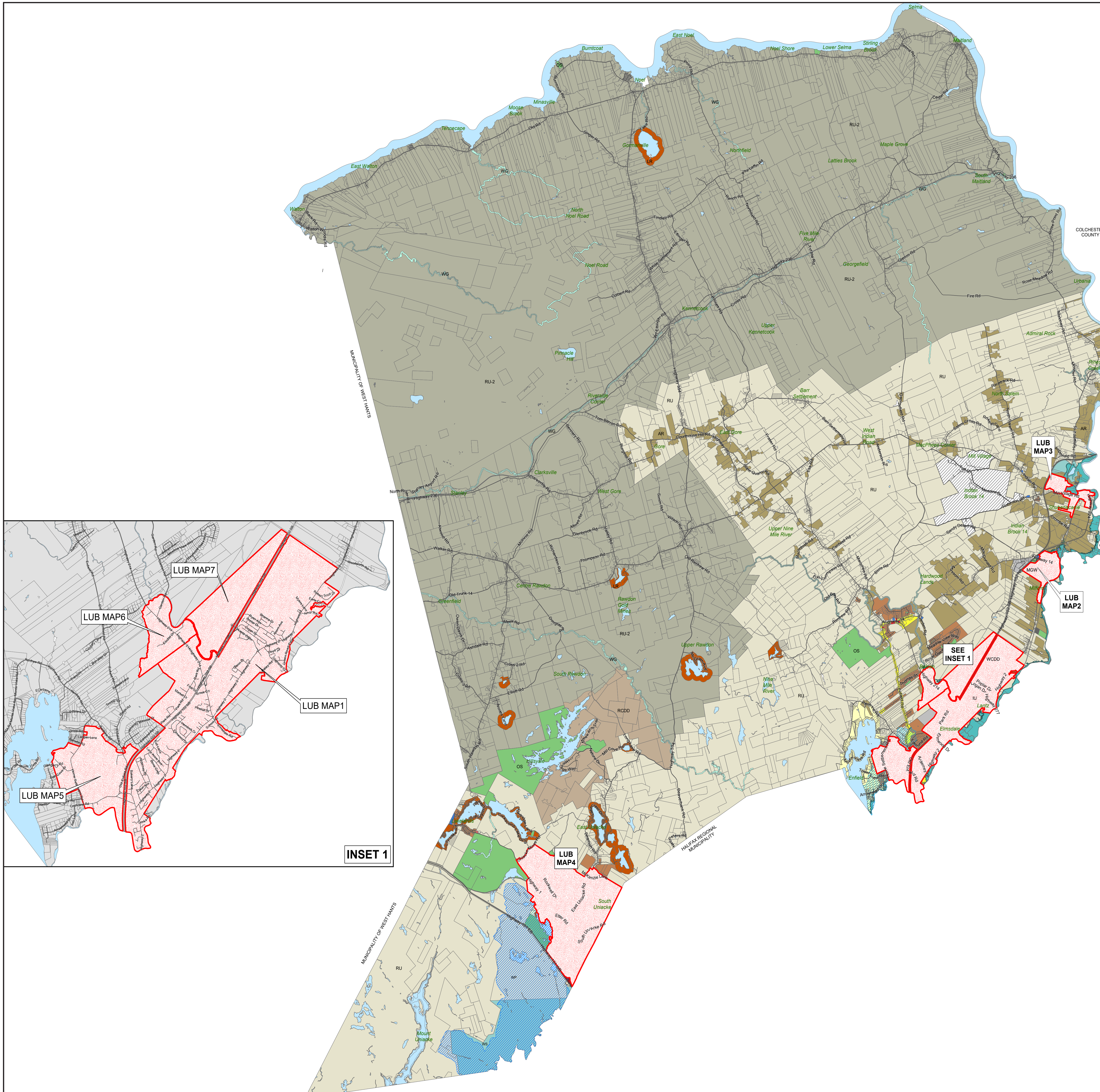


This map was produced by the Planning & Development Department and shall be used as a graphical representation of property boundaries. It is not intended to be used as a survey plan or for legal descriptions.

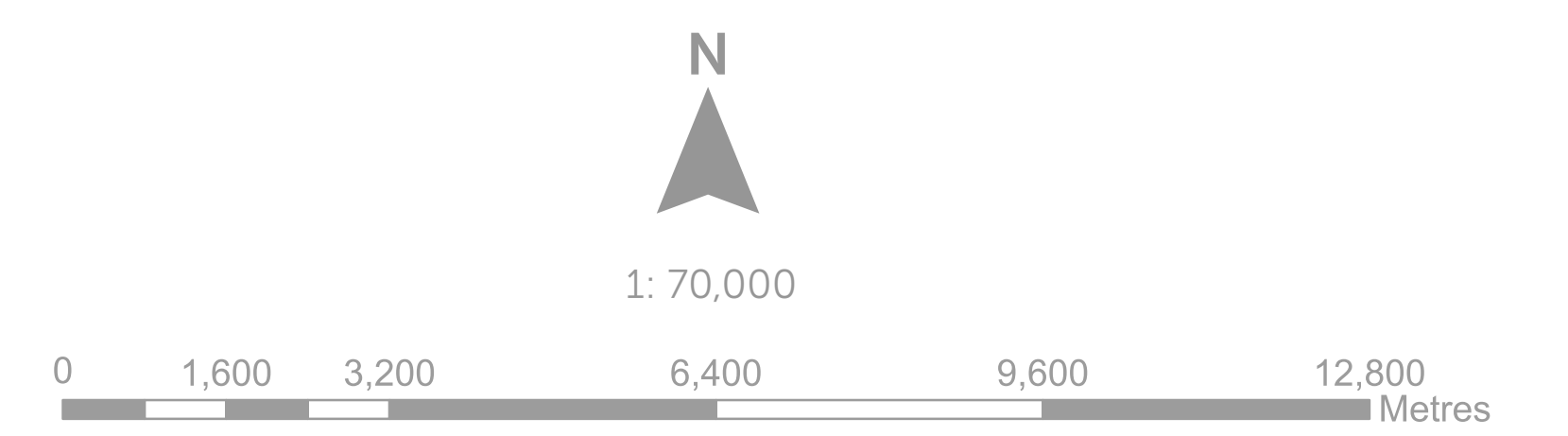
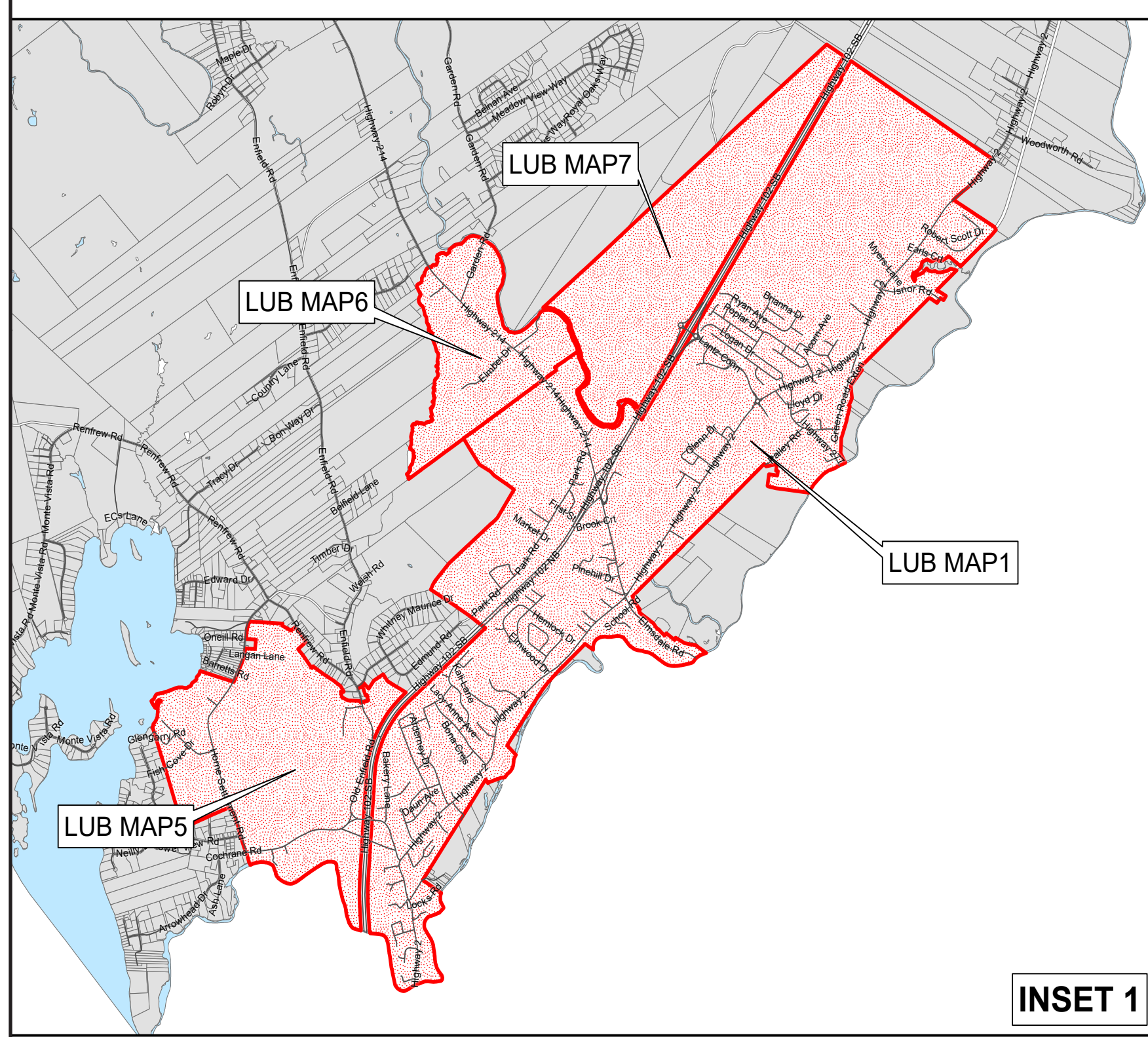




Approved on: July 27, 2023  
Amended on: September 27, 2023



RESIDENTIAL		COMMERCIAL	
	CR - Country Residential		GC - General Commercial
	LR - Lakeshore Residential		HC - Highway Commercial
	R1 - Established Residential Neighbourhood		RC - Regional Commercial
	R2 - Two Dwelling Unit Residential		BP - Business Park
	MH - Mini-Home		IC - Industrial Commercial
MIXED USE		RURAL	
	R2-T - Townhouse		AR - Agricultural Reserve
	R3 - Multiple Unit Dwelling		RU - Rural Use
	MC - Mixed Use Centre		RU-2 - Rural Use North
	VC - Village Core		RCDD - Rural Comprehensive Development District
	WCDD - Walkable Comprehensive Development District		
COMMUNITY USE		ENVIRONMENTAL	
	IU - Institutional Use		HF - High Risk Floodplain
	OS - Open Space		MF - Moderate Risk Floodplain Overlay
OTHER			WG - Watercourse Greenbelt
	IR-14 - Indian Brook 14		WS - Water Supply
	Growth Management Areas / Growth Reserve Areas		WI - Water Intake Overlay
			WP - Water Protection Overlay
			SAP-1 - Shubenacadie Aquifer Protection Overlay
			SAP-2 - Shubenacadie Aquifer Protection Overlay
			SAP-3 - Shubenacadie Aquifer Protection Overlay
			MGW - Milford Groundwater Overlay



This map was produced by the Planning & Development Department and shall be used as a graphical representation of property boundaries. It is not intended to be used as a survey plan or for legal descriptions.