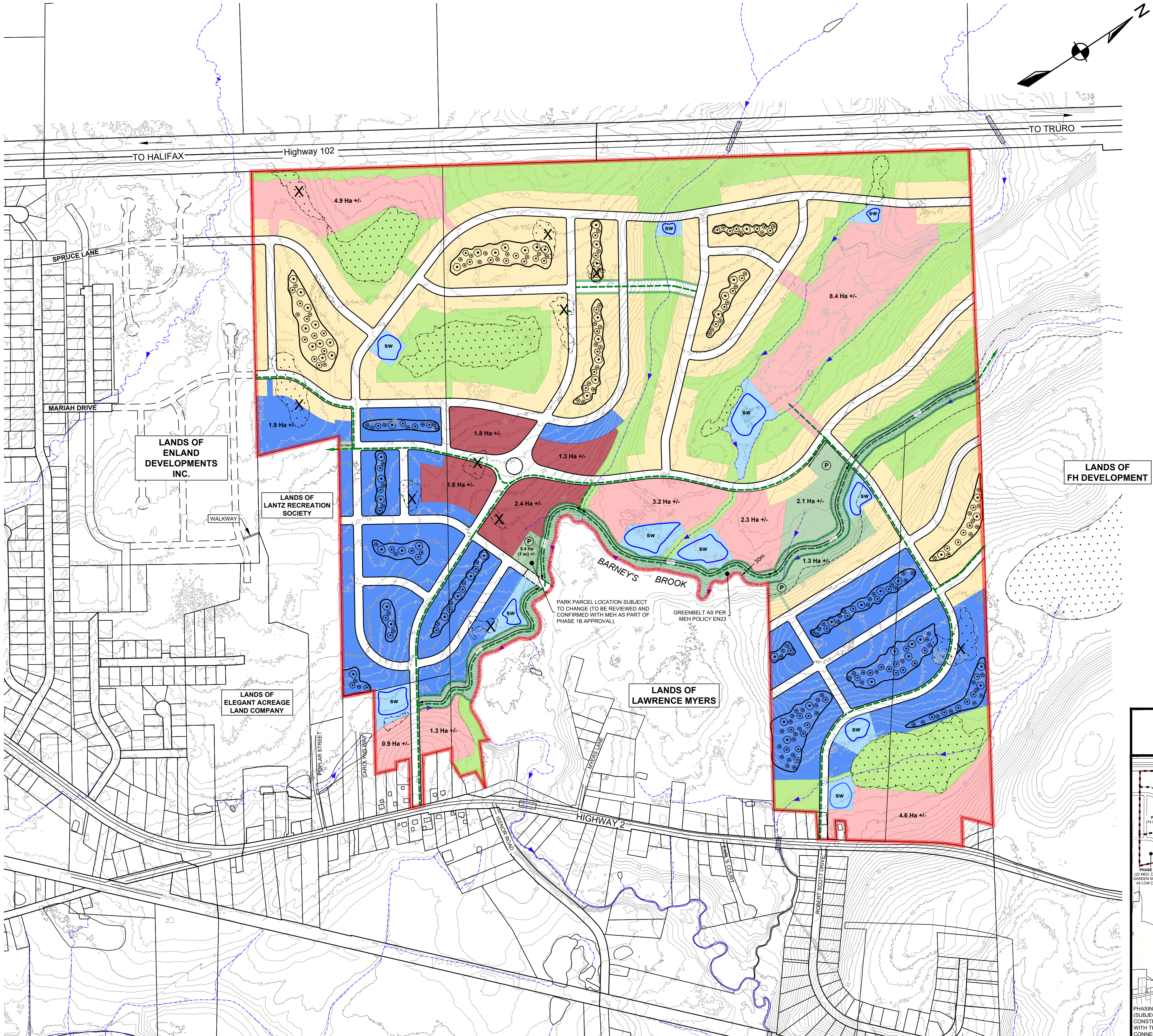


STREET CLASSIFICATION	
A - URBAN MINOR COLLECTOR, 9m TRAVEL WAY, AT TRAIL, 1.8m SIDEWALK	
A - URBAN MINOR COLLECTOR, 9m TRAVEL WAY, AT TRAIL, ALLOWANCE FOR FUTURE SIDEWALK AND TRANSIT	
B - URBAN LOCAL ROAD, 9m TRAVEL WAY, 1.8m SIDEWALK (ONE SIDE)	
ALL REMAINING STREETS	

PHASE	APPROXIMATE BARNEY'S BROOK TRAIL LENGTH (m)
1A	409
1B	238
2	891
9	349

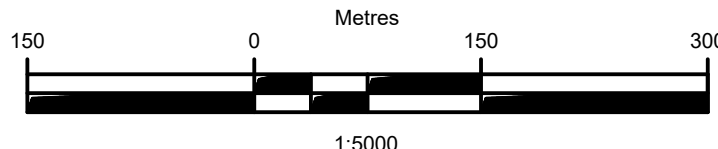
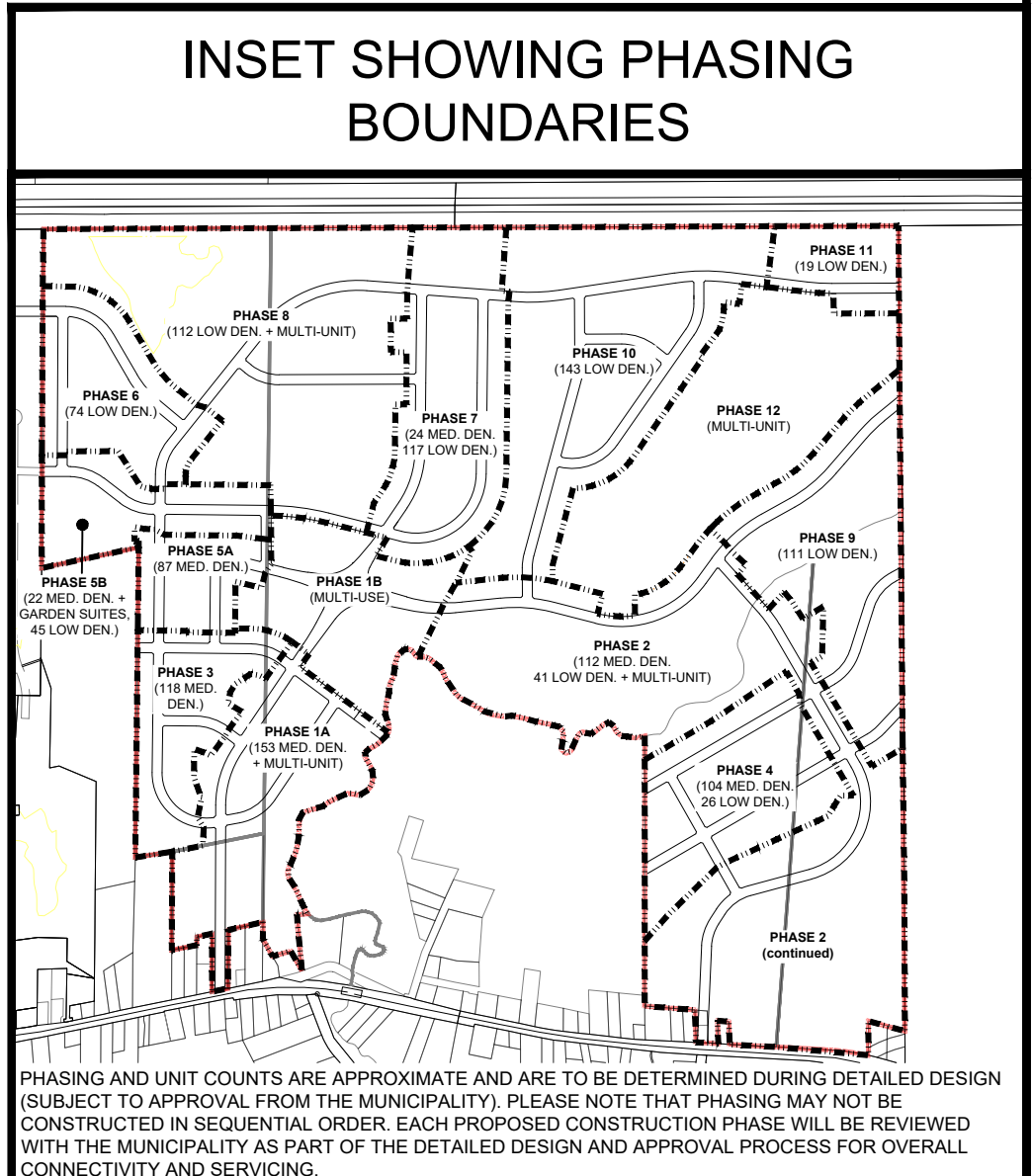


LEGEND	
EX. CONTOUR (MAJOR)	
EX. CONTOUR (MINOR)	
PROPERTY LINE	
PROJECT BOUNDARY	
RIGHT OF WAY	
ROAD CENTRELINE	
AT TRAIL	
WATERCOURSE BUFFER	
WATERCOURSE	
NEIGHBORHOOD PARK	
WETLAND	
WETLAND ALTERATION (PERMIT REQUIRED)	
STORM WATER POND	
POSSIBLE LANDS DONATED TO RECREATION SOCIETY	AREA: 6.8 ha±

LAND USE DESIGNATIONS		
MIXED-USE CENTRE		AREA: 7.3 ha±
HIGH DENSITY RESIDENTIAL		AREA: 25.6 ha±
MEDIUM DENSITY RESIDENTIAL		AREA: 35.0 ha±
LOW DENSITY RESIDENTIAL		AREA: 52.5 ha±
PUBLIC PARKLAND (INCL. BARNEY'S BROOK TRAIL)		AREA: 10.0 ha±
BUFFER/CONSERVATION AREA		AREA: 46.2 ha±
NON-DISTURBANCE AREA		
APPROXIMATE STORMWATER MANAGEMENT AREA		AREA: 6.9 ha±
ROADWAY		

ROAD LENGTHS	
COLLECTOR	6700 m ±
LOCAL	6700 m ±
TOTAL PROJECT	13 400 m ±

- NOTES
1. WETLANDS DELINEATION BY McCALLUM ENVIRONMENTAL (AUGUST 2012).
 2. CONTOURS BASED ON PROVINCIAL LIDAR ELEVATION DATA (CONTOUR INTERVAL = 1m). ELEVATIONS ARE SUBJECT TO SURVEY.
 3. ROAD AND LOT LAYOUT (INCLUDING STORMWATER MANAGEMENT AREA) SHOWN ARE PRELIMINARY AND ARE SUBJECT TO DETAILED DESIGN.
 4. PROPERTY LINES ARE BASED ON PROPERTY MAPPING AND ARE APPROXIMATE, AND SUBJECT TO SURVEY.



LAND USE PLANNING BY	PREPARED FOR	PREPARED BY	PROJECT	Engineer A. FORSYTHE	Drawn STAFF
			CONCEPT PLAN WICKWIRE STATION LANTZ, NOVA SCOTIA	Scale 1:5000	Date Jan. 16, 2020
				Project No. 16-003	Drawing No. 1 OF 1
				Filename 16-003_CP.dwg	