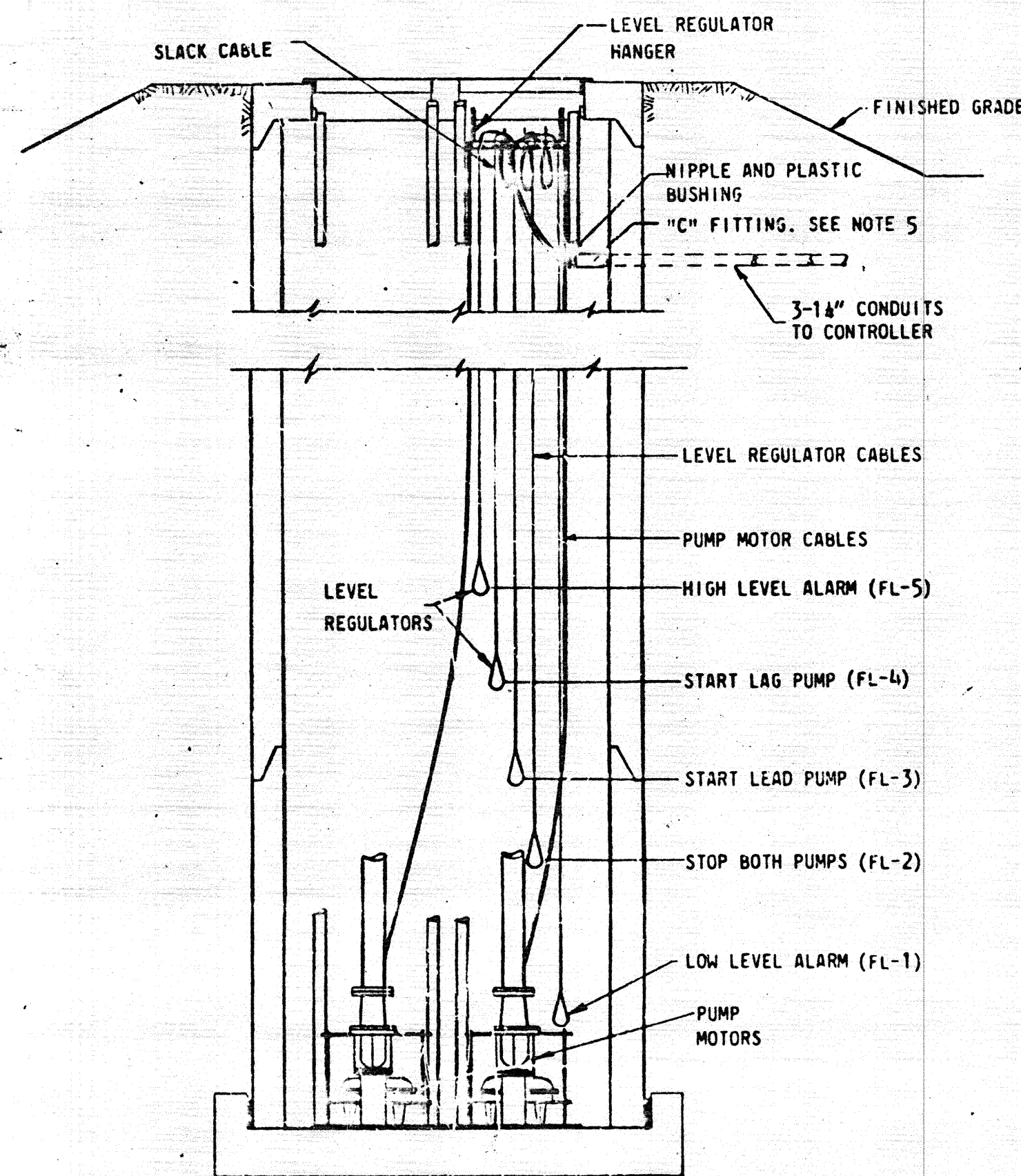
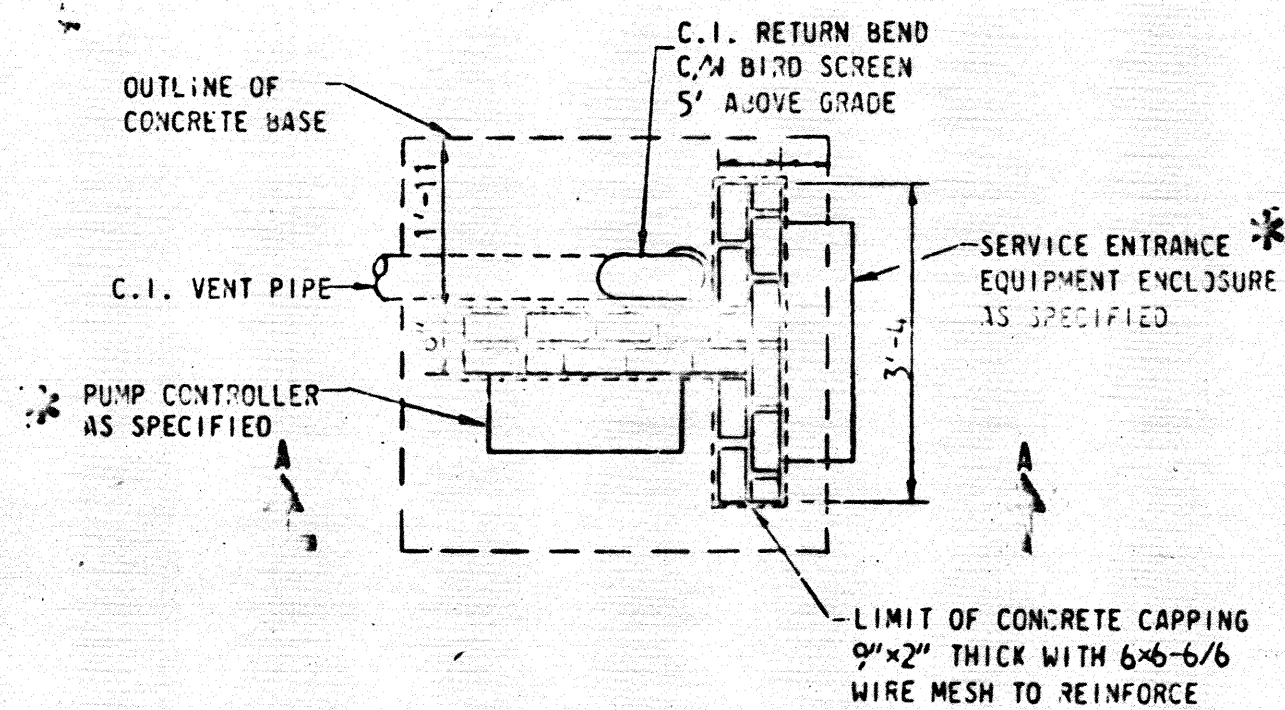


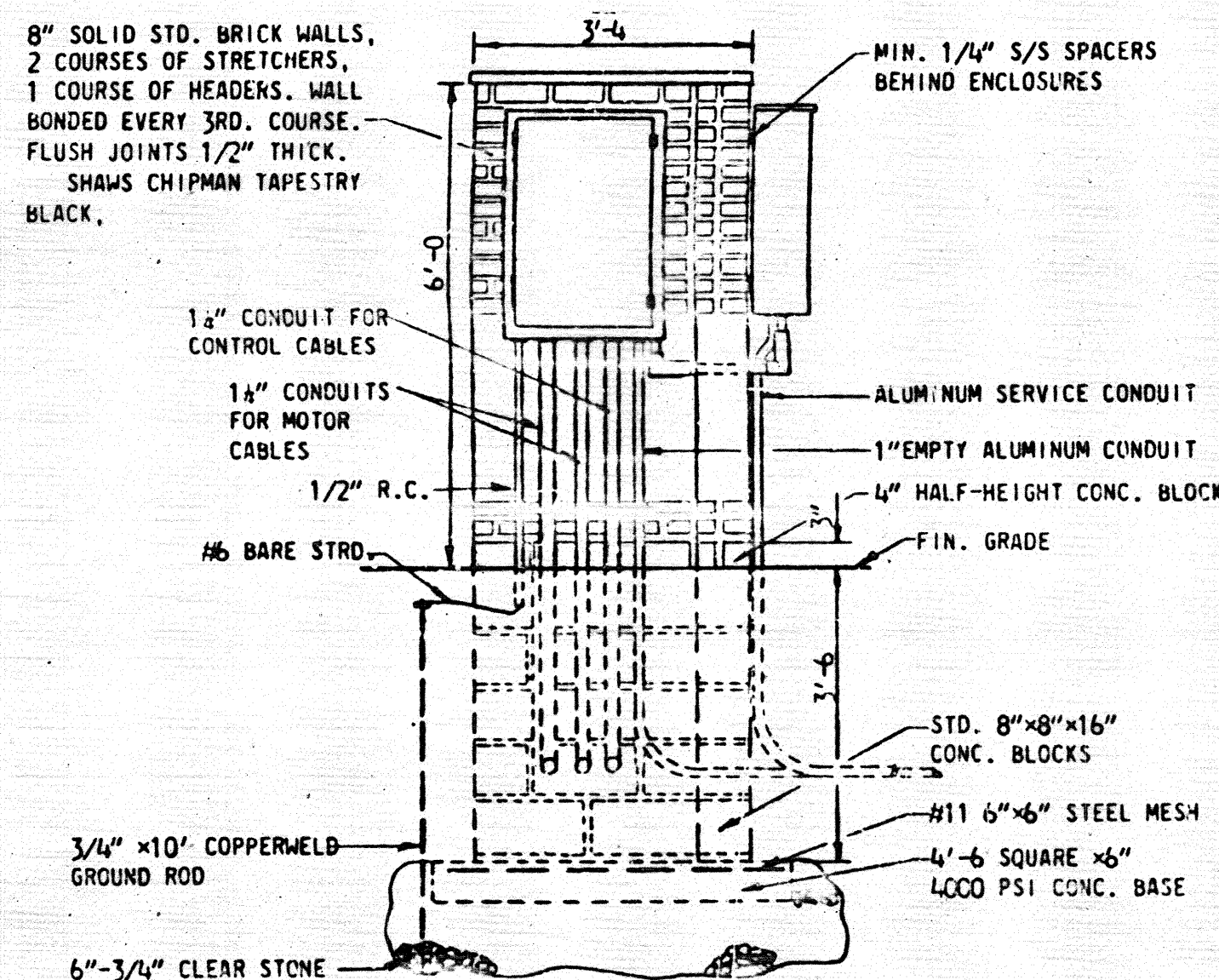
PLAN - PUMPING STATION



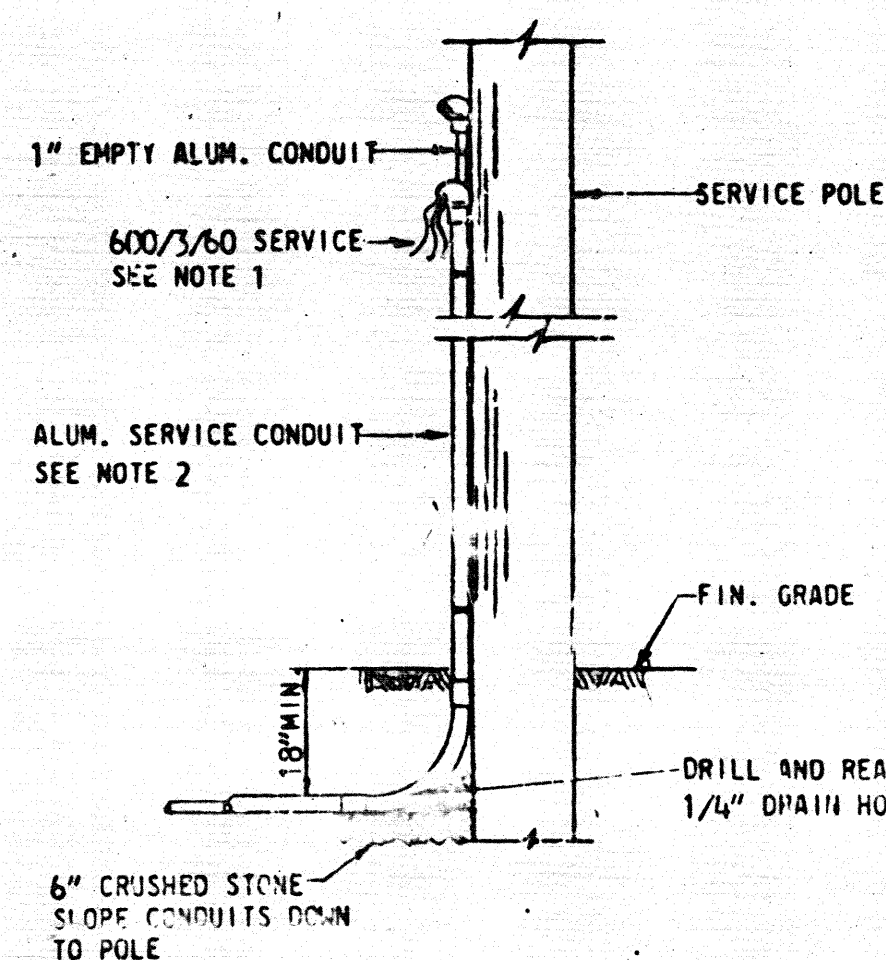
SECTION B-B
N.T.S.



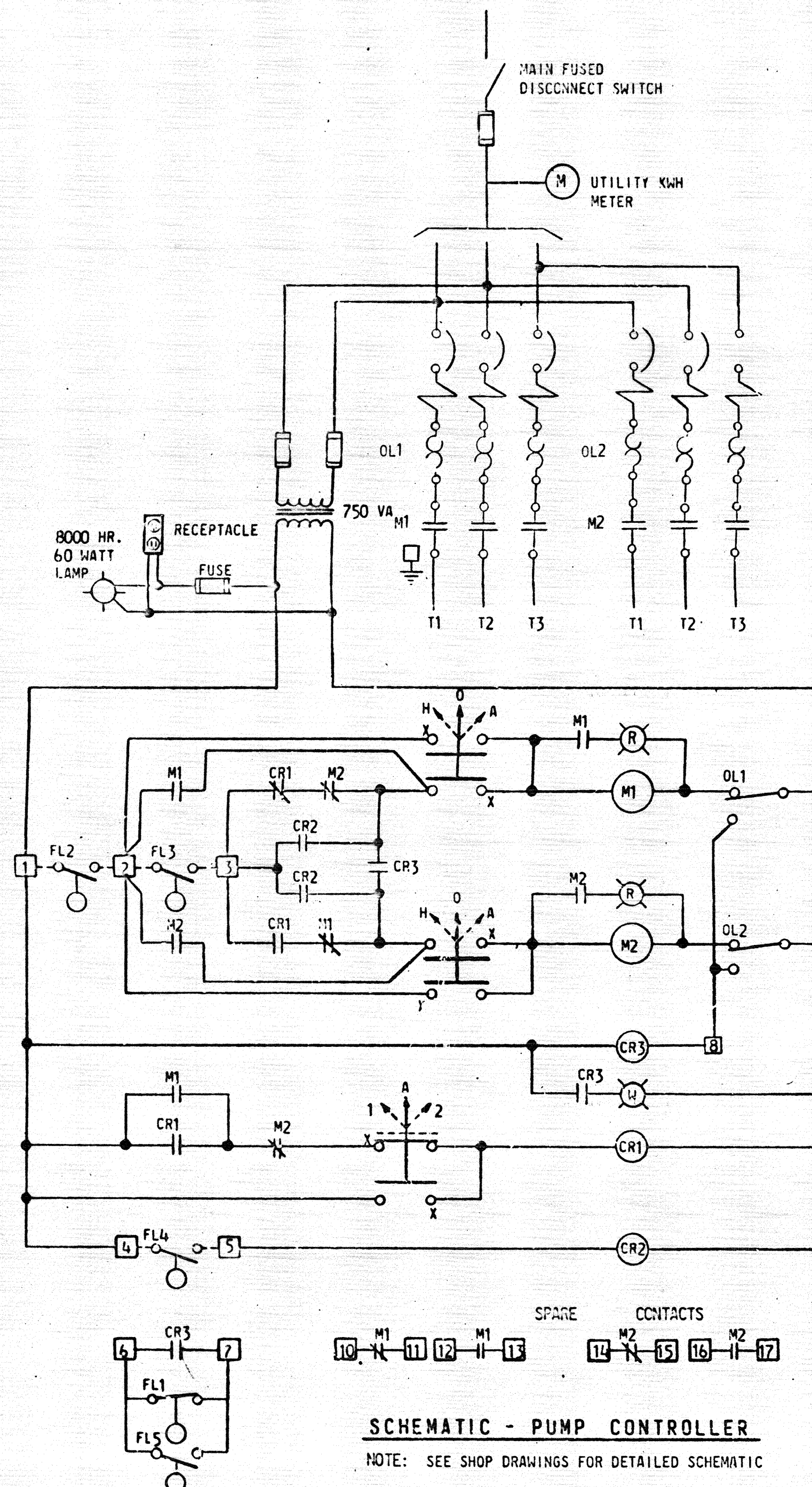
PLAN - EQUIPMENT MOUNTING STRUCTURE



SECTION A-A



DETAIL 1 SERVICE POLE
N.T.S.



SCHEMATIC - PUMP CONTROLLER

NOTE: SEE SHOP DRAWINGS FOR DETAILED SCHEMATIC

TABLE 1 - SERVICE REQUIREMENTS AND LOADS

PUMPING STATION	MOTOR H.P.	VOLTAGE	SERVICE ENTRANCE			CONNECTED LOAD	ESTIMATED DEMAND	REMARKS
			CABLE	CONDUIT	DISC.			
P.S. #4	2-9.4	600/3/60	3/4	1 1/2\" R.C.	60A	21.0 KVA	21.0 KVA	SEE NOTES 6 & 7
P.S. #5	2-2.5	600/3/60	3/10	1\" R.C.	30A	4.0 KVA	4.0 KVA	SEE NOTES 6 & 7
P.S. #6	2-2.5	600/3/60	3/10	1\" R.C.	30A	4.0 KVA	4.0 KVA	SEE NOTES 6 & 7

TABLE 2

LIQUID LEVEL REGULATOR ELEVATIONS			
FLOAT	P.S. #4	P.S. #5	P.S. #6
FL 1	29.75	40.75	39.75
FL 2	30.00	41.00	40.00
FL 3	31.25	41.75	40.75
FL 4	31.75	42.25	41.25
FL 5	32.25	42.75	41.75

Municipality of East Hants
Date: SEPT. 24/77
Please Note:
→ This information is provided for general reference only.
→ This is not representative of any other section of piping.
→ Changes may have been made since this plan.
→ Location should be verified in the field.

NOTES:
1 ALL SERVICE CABLE TO BE RHU-90X-LINK

3 ALL CABLES FROM LEVEL REGULATORS AND MOTORS TO PUMP CONTROLLER TO BE CONTINUOUS WITHOUT JOINTS OR SPLICE.

5 PACK "C" FITTINGS WITH "DUNLOP" COMPOUND & INSTALL RUBBER GASKETS UNDER FITTING COVERS. NOTE - ALL CONDUITS LEAVING NET WELL MUST BE GAS TIGHT.

7 SEE DWG. 49, FOR LOCATION OF PUMPING STATIONS.

* INDICATES SHOP DWGS. REQ'D.

2 AS CONSTRUCTED
1 ISSUED FOR CONSTRUCTION
01 ISSUED FOR APPROVAL

NO. DESCRIPTION DATE BY

REVISION OR ISSUE

THIS DRAWING SHOWS WORK
AS CONSTRUCTED

DATE: 16 JANUARY 1974

APPROVED: [Signature] ENG.

CANADIAN - BRITISH
CONSULTANTS LIMITED

MUNICIPALITY OF EAST HANTS
MUNICIPAL SERVICES - LANZ

PUMPING STATIONS
NOS. 4, 5 AND 6
ELECTRICAL

CANADIAN - BRITISH
CONSULTANTS LIMITED
HALIFAX NOVA SCOTIA

DATE: JUNE 73 SCALE: 1/2\"/>

71197 17 of 17
DRAWING NUMBER REV.